

LOC/DME I-HI-Q 110.9 Chan 46	APP CRS 044°	Rwy Idg 11010 TDZE 13 Apt Elev 13
---	------------------------	--

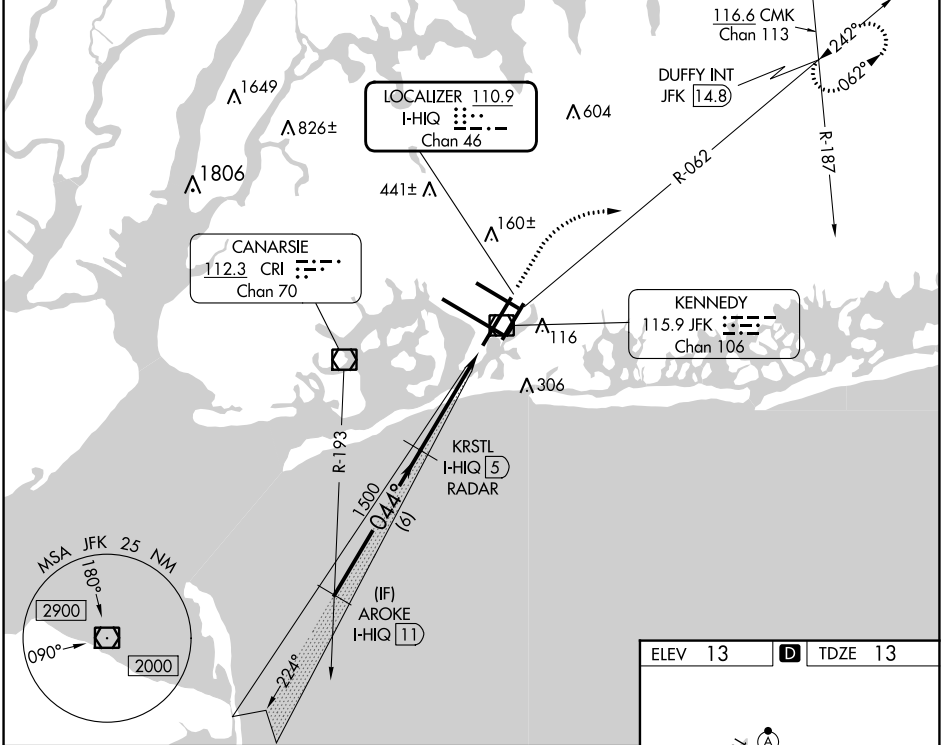
ILS or LOC RWY 4L

JOHN F KENNEDY INTL (JFK)

RADAR required for procedure entry. DME or RADAR required for LOC only.
 Simultaneous approach authorized.
 Autopilot coupled approach NA below 200 feet MSL.

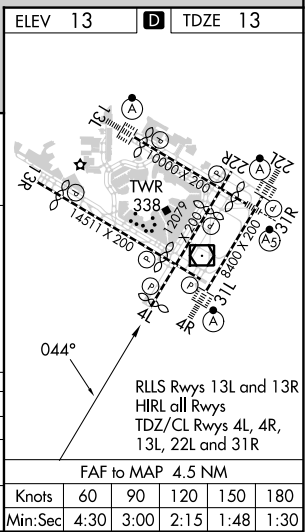
MISSED APPROACH: Climb to 2000 then climbing right turn to 3000 on JFK VOR/DME R-062 to DUFFY INT/JFK 14.8 DME and hold.

D-ATIS (ARR/DEP) (ARR-NE) (ARR-SW) 128.725 117.7 115.4	NEW YORK APP CON 128.125 269.0	KENNEDY TOWER Rwys 4R/22L and 13L/31R 119.1 281.55 Rwys 4L/22R and 13R/31L 123.9 281.55	GND CON 121.9 348.6	CLNC DEL 135.05 348.6	CPDLC
---	--	---	-------------------------------	---------------------------------	-------



VGSI and ILS glidepath not coincident (VGSI Angle 3.00/TCH 75).

	2000	3000	DUFFY INT
	↑	↪ JFK R-062	
AROKE I-HI-Q 11	2000		
KRSTL I-HI-Q 5 RADAR	1500		
I-HI-Q 1.6			
I-HI-Q 0.5			
GS 3.00° TCH 57	044°		
	6 NM	3.3 NM	1.2 NM
CATEGORY	A	B	C
S-ILS 4L	231/40	218 (300-3/4)	
S-LOC 4L	460/55	447 (500-1)	460-1 3/8 447 (500-1 3/8)
CIRCLING	640-1	627 (700-1)	700-2 687 (700-2) 700-2 1/4 687 (700-2 1/4)



NE-2, 31 OCT 2024 to 28 NOV 2024

NE-2, 31 OCT 2024 to 28 NOV 2024