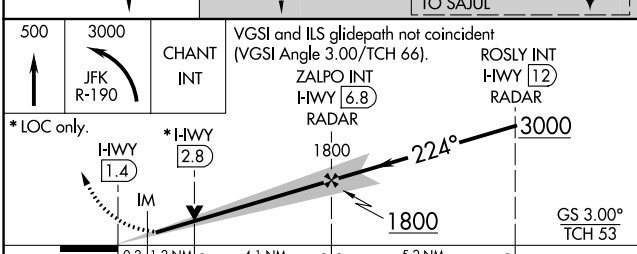
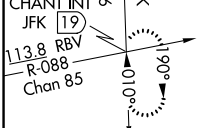
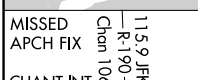
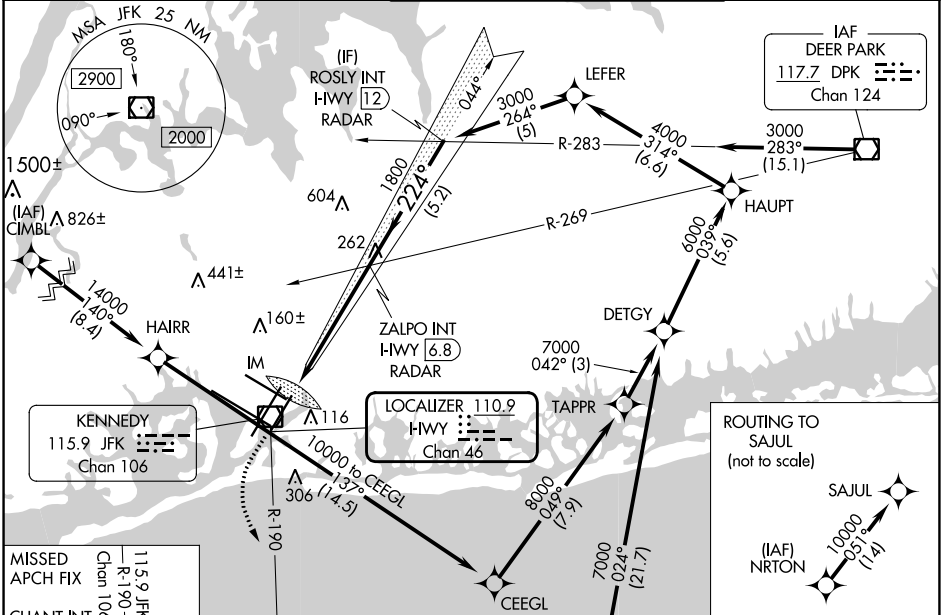


LOC/DME I-HWY	APP CRS	Rwy Idg	<b>8400</b>
<b>110.9</b>	<b>224°</b>	TDZE	<b>12</b>
Chan <b>46</b>		Apt Elev	<b>13</b>

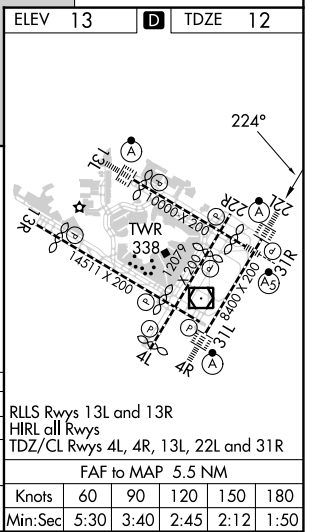
# ILS or LOC RWY 22L

JOHN F KENNEDY INTL (JFK)

RNAV 1-GPS or RADAR required for procedure entry. From CIMBL, NRTON: RNAV 1-GPS required.		ALSF-2	MISSED APPROACH: Climb to 500 then climbing left turn to 3000 on JFK VOR/DME R-190 to CHANT INT/19 DME and hold.		
Simultaneous approach authorized.					
D-ATIS (ARR/DEP) (ARR-NE) (ARR-SW)	NEW YORK APP CON	KENNEDY TOWER Rwys 4R/22L and 13L/31R		GND CON	CLNC DEL
<b>128.725 117.7 115.4</b>	<b>128.125 269.0</b>	<b>119.1 281.55</b> <b>123.9 281.55</b>		<b>121.9</b> <b>348.6</b>	<b>135.05</b> <b>348.6</b>
		Rwys 4L/22R and 13R/31L			CPDLC



500	3000	CHANT INT	VGSi and ILS glidepath not coincident (VGSi Angle 3.00/TCH 66).	
	JFK R-190		ZALPO INT HWY [6.8] RADAR	ROSLY INT HWY [12] RADAR
* LOC only.				
H-WY [1.4]	H-WY [2.8]		1800	3000
GS 3.00° TCH 53				
0.2 1.2 NM 4.1 NM 5.2 NM				
CATEGORY	A	B	C	D
S-ILS 22L	212/18		200 (200-1/2)	
S-LOC 22L	520/24 508 (600-1/2)		520/55 508 (600-1)	
CIRCLING	640-1 627 (700-1)		680-1 3/4 667 (700-1 3/4) 680-2 667 (700-2)	



NE-2, 03 OCT 2024 to 31 OCT 2024

NE-2, 03 OCT 2024 to 31 OCT 2024