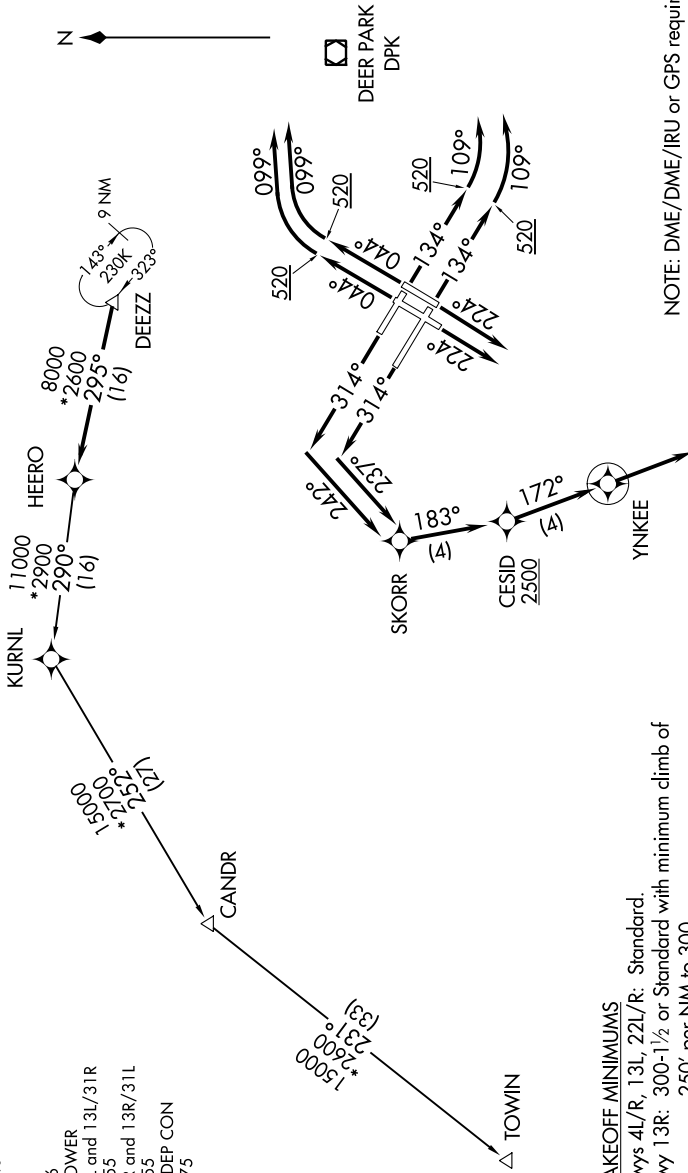


# DEZZ FIVE DEPARTURE (RNAV)

**TOP ALTITUDE:  
5000**

NE-2, 03 OCT 2024 to 31 OCT 2024

D-ATIS 128.725  
 CLNC DEL 135.05 348.6  
 CPDIC  
 GND CON 121.9 348.6  
 KENNEDY TOWER  
 Rwy 4R/22L and 13L/31R 119.1 281.55  
 Rwy 4L/22R and 13R/31L 123.9 281.55  
 NEW YORK DEP CON 135.9 353.75



**TAKEOFF MINIMUMS**  
 Rwy 4L/R, 13L, 22L/R: Standard.  
 Rwy 13R: 300-1/2 or Standard with minimum climb of 250' per NM to 300.  
 Rwy 31L/R: Standard with minimum climb of 500' per NM to 1400.

NOTE: DME/DME/IRU or GPS required.  
 NOTE: Radar Required.  
 NOTE: RNAV 1.  
 NOTE: TOWIN transition ATC assigned only.

(NARRATIVE ON FOLLOWING PAGE)

NOTE: Chart not to scale.

NE-2, 03 OCT 2024 to 31 OCT 2024

# DEZZ FIVE DEPARTURE (RNAV)