

APP CRS	Rwy Idg	9800
287°	TDZE	2
	Apt Elev	4

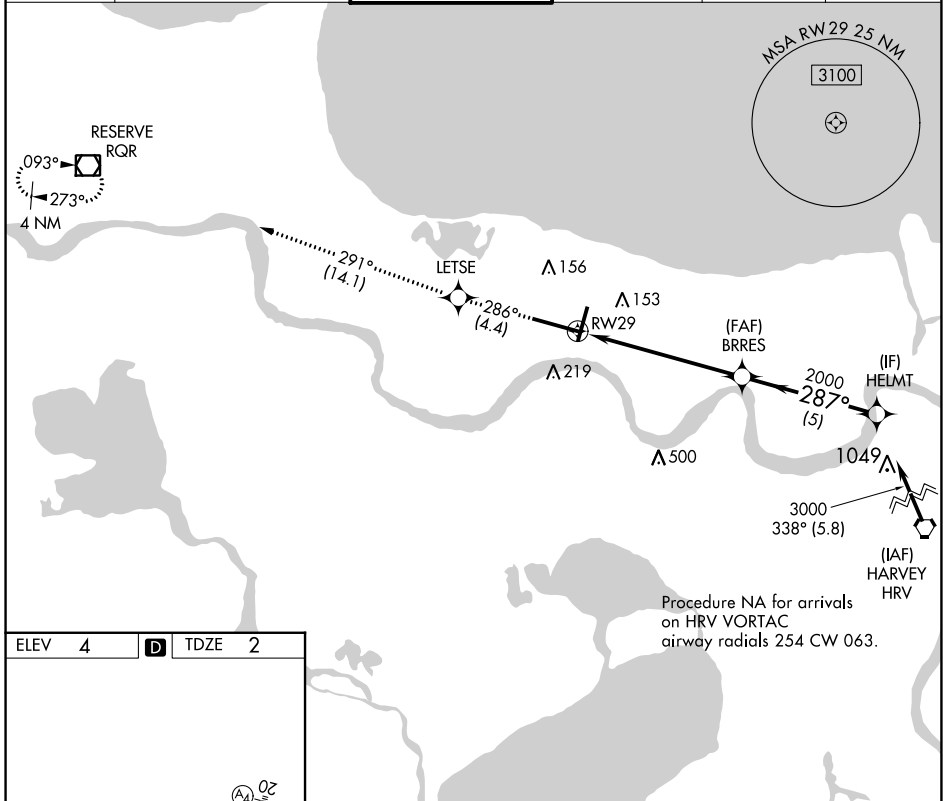
RNAV (RNP) Z RWY 29

LOUIS ARMSTRONG NEW ORLEANS INTL (MSY)

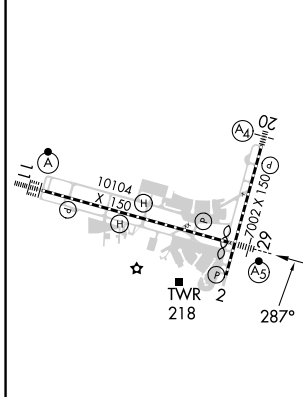
▼ For uncompensated Baro-VNAV systems, procedure NA below -1°C (31°F) or above 54°C (130°F). GPS Required.

MALSRL
 MISSED APPROACH: Climb to 3000 on track 286° to LETSE and on track 291° to RQR VOR/DME and hold.

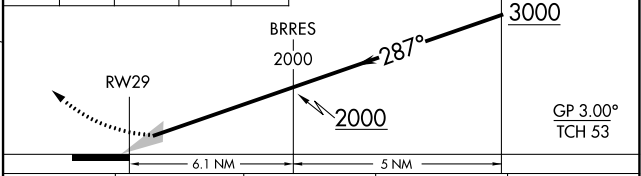
D-ATIS 127.55	NEW ORLEANS APP CON WEST 125.5 350.35 EAST 133.15 290.3	NEW ORLEANS TOWER 119.5 254.3	GND CON 121.9 273.525	CLNC DEL 120.925	CPDLC
-------------------------	---	---	---------------------------------	----------------------------	-------



ELEV	4	D	TDZE	2
------	----------	----------	------	----------



3000	↑	tr 286°	LETSE	tr 291°	RQR	VGSI and RNAV glidepath not coincident (VGSI Angle 3.00/TCH 68).
------	---	---------	-------	---------	-----	--



CATEGORY	A	B	C	D
RNP 0.30 DA	382/40 380 (400-¾)			

AUTHORIZATION REQUIRED

SC-4, 31 OCT 2024 to 28 NOV 2024

SC-4, 31 OCT 2024 to 28 NOV 2024