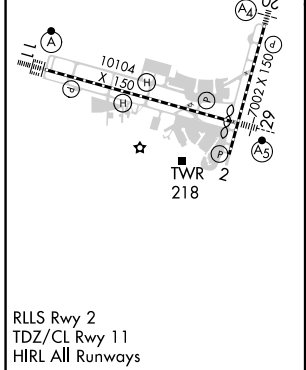
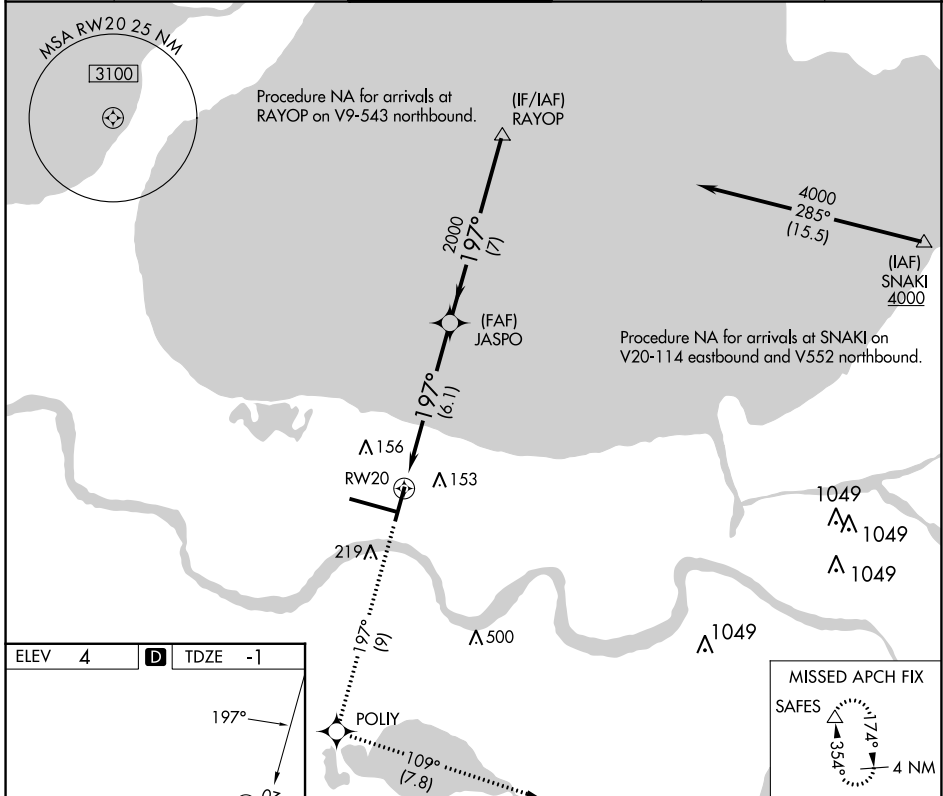


APP CRS <b>197°</b>	Rwy Idg <b>6948</b>
	TDZE <b>-1</b>
	Apt Elev <b>4</b>

# RNAV (RNP) Z RWY 20

LOUIS ARMSTRONG NEW ORLEANS INTL (MSY)

RNP AR APCH - GPS.		MALS 	MISSED APPROACH: Climb to 2000 on track 197° to POLIY and track 109° to SAFES and hold.		
<p><b>▼</b> For uncompensated Baro-VNAV systems, procedure NA below -1°C or above 54°C. For inop ALS, increase RNP 0.30 all Cats visibility to RVR 6000.</p>					
D-ATIS <b>127.55</b>	NEW ORLEANS APP CON WEST <b>125.5 350.35</b> EAST <b>133.15 290.3</b>	NEW ORLEANS TOWER <b>119.5 254.3</b>	GND CON <b>121.9 273.525</b>	CLNC DEL <b>120.925</b>	CPDLC



ELEV 4	<b>D</b>	TDZE -1		
<p>197°</p>		<p>MISSED APCH FIX SAFES</p>		
2000	tr 197°	POLIY	tr 109°	SAFES
<p>RAYOP 4000</p>		<p>JASPO 2000</p>		
<p>RWY 20</p>		<p>2000</p>		<p>GP 3.00° TCH 52</p>
<p>6.1 NM</p>		<p>7 NM</p>		
CATEGORY	A	B	C	D
RNP 0.11 DA		363/40	364 (400-¾)	
RNP 0.30 DA		414/50	415 (500-1)	

**AUTHORIZATION REQUIRED**