

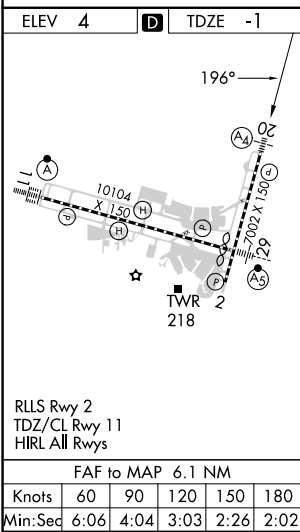
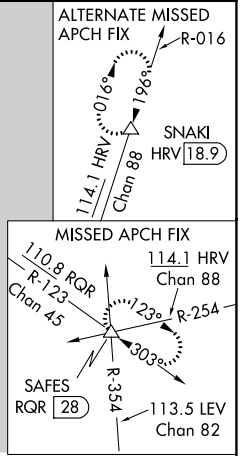
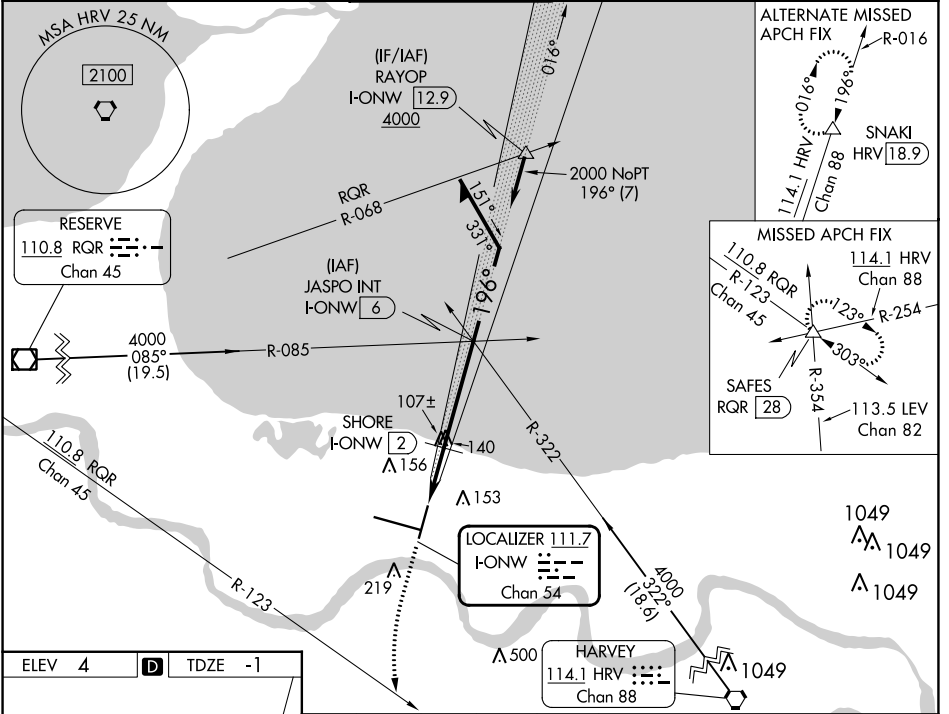
LOC/DME I-ONW 111.7 Chan 54	APP CRS 196°	Rwy Idg 6948 TDZE Apt Elev 4
---	------------------------	--

LOC RWY 20

LOUIS ARMSTRONG NEW ORLEANS INTL (MSY)

<p>▼ Rwy 20 helicopter visibility reduction below RVR 4000 NA. ▲ For inop ALS when using SHORE fix minimums, increase S-20 Cat D visibility to RVR 5500. For inop ALS, increase S-20 Cat D visibility to 2 SM.</p>	<p>MALS (A)</p>	<p>MISSED APPROACH: Climb to 1300 then climbing left turn to 2000 on heading 180° and RQR VOR/DME R-123 to SAFES INT/RQR 28 DME and hold.</p>
--	----------------------------	---

D-ATIS 127.55	NEW ORLEANS APP CON WEST 125.5 350.35 EAST 133.15 290.3	NEW ORLEANS TOWER 119.5 254.3	GND CON 121.9 273.525	CLNC DEL 120.925	CPDLC
-------------------------	---	---	---------------------------------	----------------------------	-------



ELEV 4	D	TDZE -1				
1300	2000	hdg 180°	RQR R-123	SAFES Δ	JASPO INT I-ONW 6	Remain within 10 NM
I-ONW DME ANTENNA I-ONW 0.2		SHORE I-ONW 2		I-ONW 0.8		
700		700		3.00° TCH 52		
1 NM		1.2 NM		4 NM		
CATEGORY	A	B	C	D		
S-20	700/40	701 (700-¾)	700-1¾	701 (700-1¾)		
C CIRCLING	700-1	696 (700-1)	700-2	696 (700-2)	700-2¼	696 (700-2¼)
SHORE FIX MINIMUMS						
S-20	360/40		361 (400-¾)			
C CIRCLING	520-1	516 (600-1)	580-1½	576 (600-1½)	600-2	596 (600-2)

SC-4, 31 OCT 2024 to 28 NOV 2024

SC-4, 31 OCT 2024 to 28 NOV 2024