

LOC/DME I-HOX 109.9 Chan 36	APP CRS 286°	Rwy Idg 9800 TDZE 2 Apt Elev 4
---	------------------------	---

ILS or LOC RWY 29

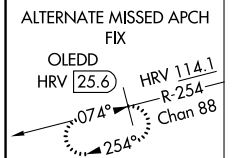
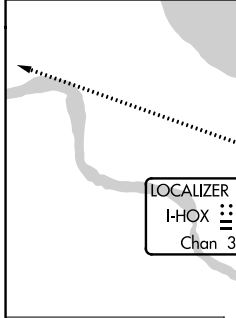
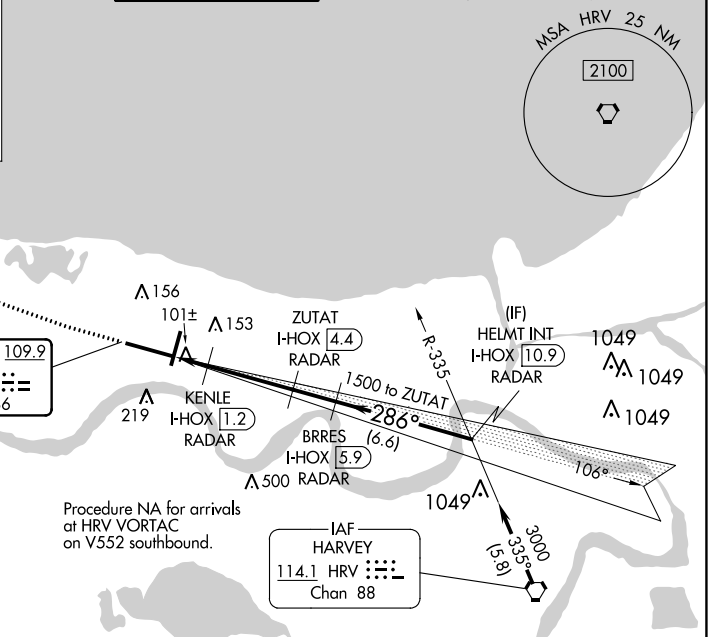
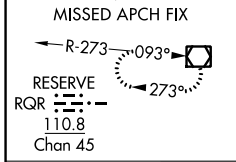
LOUIS ARMSTRONG NEW ORLEANS INTL (MSY)

▼ DME or RADAR required. For inop MALSR, increase S-LOC 29 Cat C/D visibility to 1½ mile and increase KENLE Fix Minimums S-LOC 29 Cat C/D visibility to RVR 5500.
****RVR 1800 authorized with use of FD or AP or HUD to DA.**

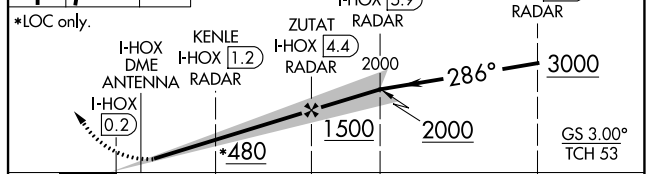
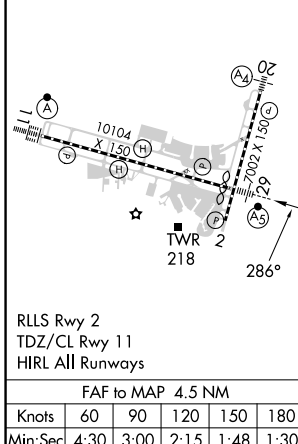
MALSR

MISSED APPROACH: Climb to 600 then climbing right turn to 3000 direct RQR VOR/DME and hold.

D-ATIS 127.55	NEW ORLEANS APP CON WEST 125.5 350.35 EAST 133.15 290.3	NEW ORLEANS TOWER 119.5 254.3	GND CON 121.9 273.525	CLNC DEL 120.925	CPDLC
-------------------------	---	---	---------------------------------	----------------------------	-------



ELEV 4	D	TDZE 2	600	3000	RQR	VGSI and ILS glidepath not coincident (VGSI Angle 3.00/TCH 68).
---------------	----------	---------------	-----	------	-----	---



CATEGORY	A	B	C	D
S-ILS 29**	202/24 200 (200-½)			
S-LOC 29	480/24	478 (500-½)	480/50	478 (500-1)
C CIRCLING	520-1	516 (600-1)	580-1½ 576 (600-1½)	600-2 596 (600-2)
KENLE FIX MINIMUMS				
S-LOC 29	360/24	358 (400-½)	360/30	358 (400-¾)
C CIRCLING	520-1	516 (600-1)	580-1½ 576 (600-1½)	600-2 596 (600-2)

NEW ORLEANS, LOUISIANA
Amdt 10A 12OCT17

LOUIS ARMSTRONG NEW ORLEANS INTL (MSY)
30°00'N-90°16'W

ILS or LOC RWY 29

SC-4, 31 OCT 2024 to 28 NOV 2024

SC-4, 31 OCT 2024 to 28 NOV 2024