

LOC/DME I-JFI 111.7 Chan 54	APP CRS 016°	Rwy Idg 7002 TDZE 2 Apt Elev 4
---	------------------------	---

ILS or LOC RWY 2

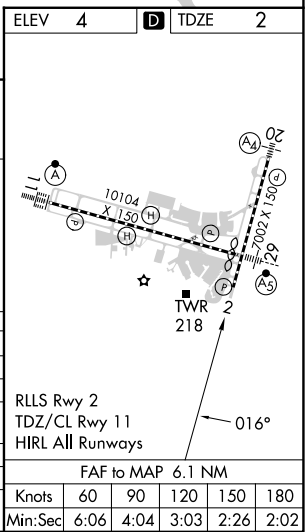
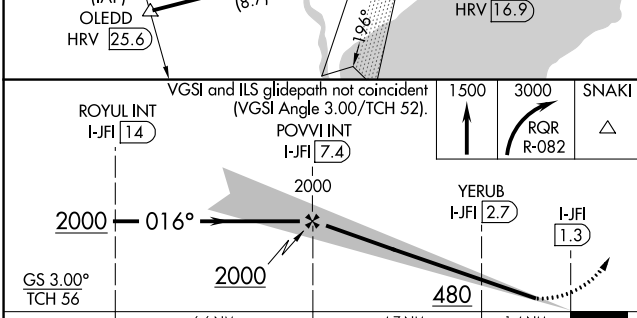
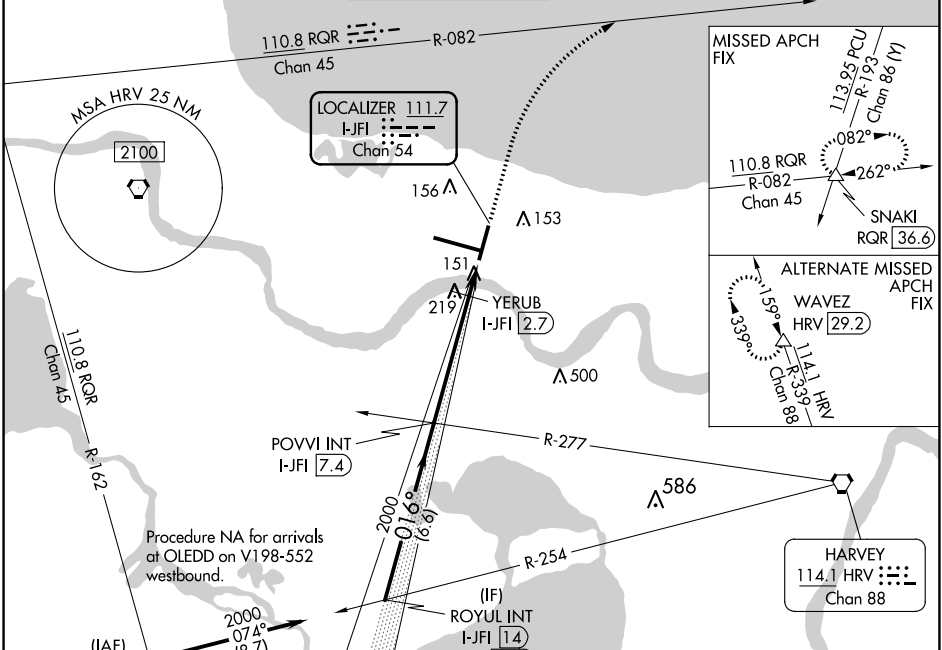
LOUIS ARMSTRONG NEW ORLEANS INTL (MSY)

DME required for procedure entry.

Autopilot coupled approach NA below 880. Rwy 2 helicopter visibility reduction below RVR 4000 NA.

MISSED APPROACH: Climb to 1500 then climbing right turn to 3000 on RQR VOR/DME R-082 to SNAKI INT/RQR 36.6 DME and hold.

D-ATIS 127.55	NEW ORLEANS APP CON WEST 125.5 350.35 EAST 133.15 290.3	NEW ORLEANS TOWER 119.5 254.3	GND CON 121.9 273.525	CLNC DEL 120.925	CPDLC
-------------------------	---	---	---------------------------------	----------------------------	-------



CATEGORY	A	B	C	D
S-ILS 2		415/60	413 (500-1¼)	
S-LOC 2	480/55	478 (500-1)	480-1⅜	478 (500-1⅜)
CIRCLING	520-1	516 (600-1)	580-1½ 576 (600-1½)	580-2 576 (600-2)
YERUB FIX MINIMUMS				
S-LOC 2	420/55	418 (500-1)	420/60	418 (500-1¼)
CIRCLING	520-1	516 (600-1)	580-1½ 576 (600-1½)	580-2 576 (600-2)

SC-4, 31 OCT 2024 to 28 NOV 2024

SC-4, 31 OCT 2024 to 28 NOV 2024