

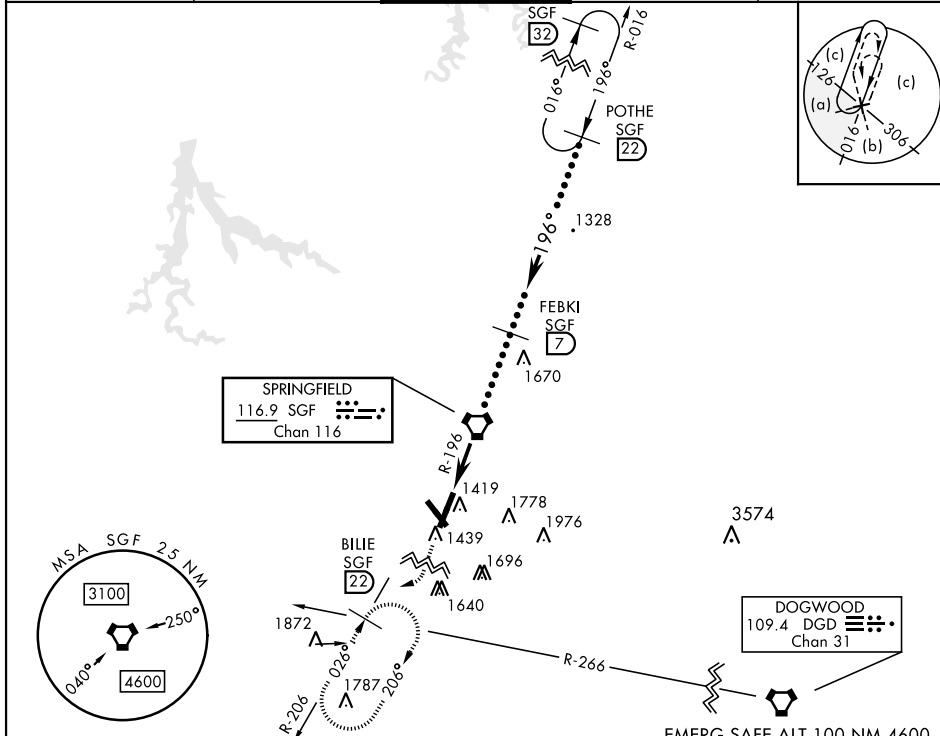
SPRINGFIELD, MISSOURI

# HI-TACAN RWY 20

VORTAC SGF <b>116.9</b> Chan <b>116</b>	APCH CRS <b>196°</b>	Rwy Idg <b>7003</b> TDZE <b>1262</b> Arpt Elev <b>1268</b>	AL-604 [USAF]	SPRINGFIELD-BRANSON NATL (KSGF)
---	-------------------------	--	---------------	---------------------------------

<p>When local altimeter setting not received, use Monett altimeter setting.</p>	<p>MALS</p>	<p>MISSED APPROACH: Climb to 3000 then right turn via SGF VORTAC R-206 to BILLIE INT/SGF 22 DME and hold.</p>
---	-------------	---

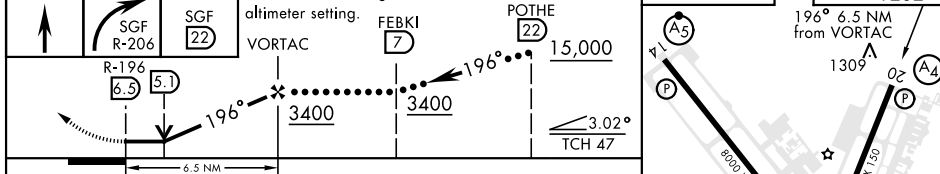
ATIS <b>135.125</b>	APP CON <b>121.1 290.5</b>	TOWER <b>119.9 257.8</b>	GND CON <b>121.9 251.15</b>	CLNC DEL <b>123.675</b>
------------------------	-------------------------------	-----------------------------	--------------------------------	----------------------------



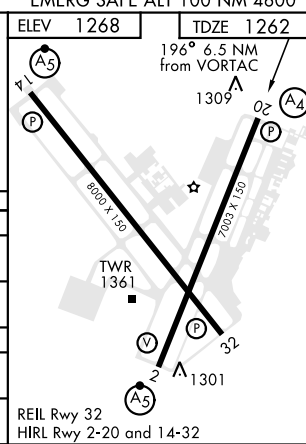
NC-3, 11 JUL 2024 to 08 AUG 2024

NC-3, 11 JUL 2024 to 08 AUG 2024

3000	<p>SGF R-206</p>	<p>BILLIE SGF 22</p>	VDP NA when using Monett altimeter setting.	FEBKI 7	POTHE 22	15,000
------	------------------	----------------------	---	---------	----------	--------



CATEGORY	C	D	E
S-20	1760-1¼ 498 (500-1¼)	1760-1½ 498 (500-1½)	1760-1¾ 498 (500-1¾)
CIRCLING	1820-1½ 552 (600-1½)	1820-2 552 (600-2)	1920-2¼ 652 (700-2¼)
MONETT ALTIMETER SETTING MINIMUMS			
S-20	1860-1½ 598 (600-1½)	1860-1¾ 598 (600-1¾)	1860-2 598 (600-2)
CIRCLING	1920-1¾ 652 (700-1¾)	1920-2¾ 652 (700-2¾)	2020-2¾ 752 (800-2¾)



SPRINGFIELD, MISSOURI 37°15'N-93°23'W SPRINGFIELD-BRANSON NATL (KSGF)

# HI-TACAN RWY 20

