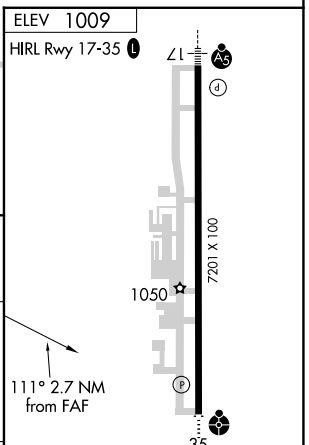
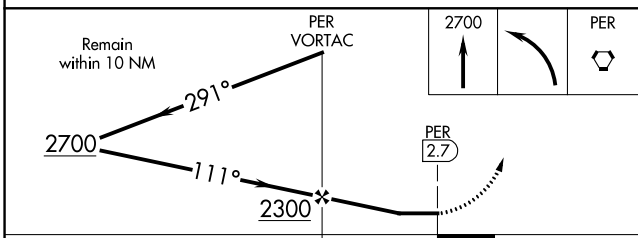
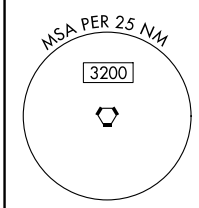
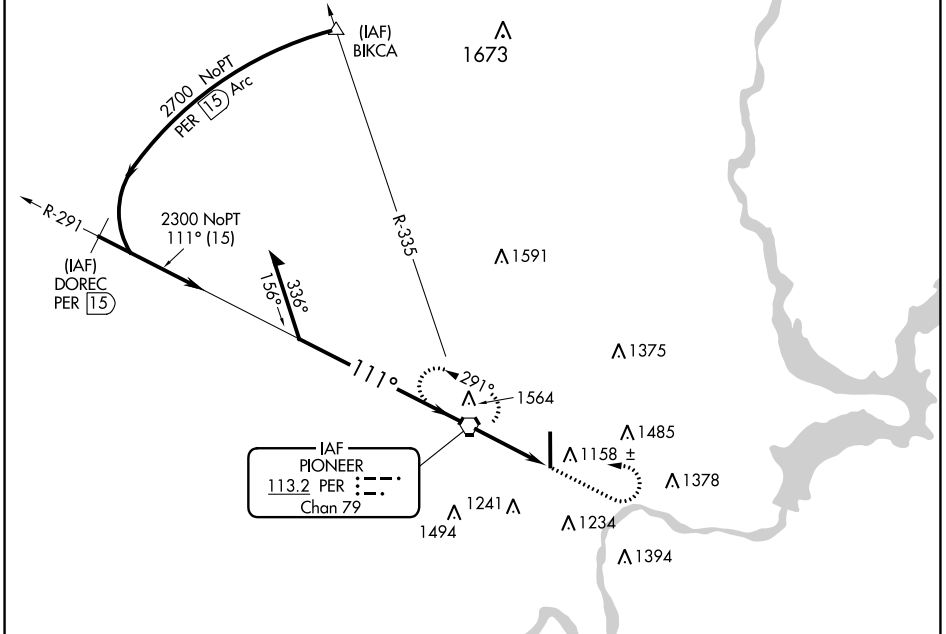


VORTAC PER <b>113.2</b> Chan <b>79</b>	APP CRS <b>111°</b>	Rwy Idg TDZE Apt Elev <b>N/A</b> <b>N/A</b> <b>1009</b>
--	------------------------	--

**VOR-A**  
PONCA CITY RGNL (PNC)

**MISSED APPROACH:** Climb to 2700 then left turn direct PER VORTAC and hold.

ASOS <b>134.075</b>	KANSAS CITY CENTER <b>127.8 319.1</b>	UNICOM <b>123.0 (CTAF) 0</b>
------------------------	--	---------------------------------



CATEGORY	FAF to MAP 2.7 NM				
	A	B	C	D	
CIRCLING	1520-1 511 (600-1)	1580-1 571 (600-1)	1800-2¼ 791 (800-2¼)	1880-2¾ 871 (900-2¾)	
	Knots 60 90 120 150 180	Min:Sec 2:42 1:48 1:21 1:05 0:54			

SC-1, 31 OCT 2024 to 28 NOV 2024

SC-1, 31 OCT 2024 to 28 NOV 2024