

WAAS CH <b>93808</b> <b>W35A</b>	APP CRS <b>355°</b>	Rwy Idg <b>7201</b> TDZE <b>1008</b> Apt Elev <b>1009</b>
--	------------------------	---

# RNAV (GPS) RWY 35

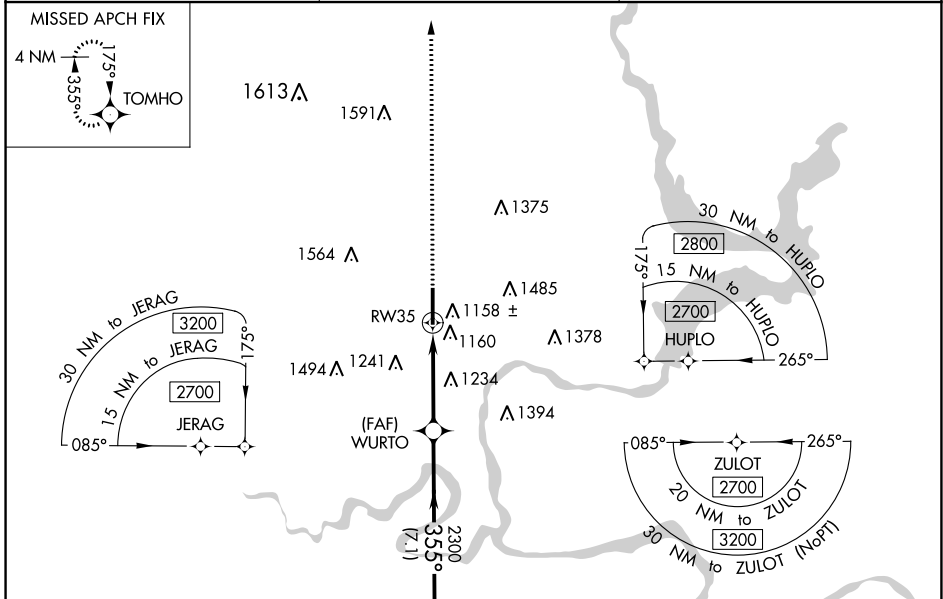
PONCA CITY RGNL (PNC)

**⚠** For uncompensated Baro-VNAV systems, LNAV/VNAV NA below -17°C (2°F) or above 46°C (114°F). DME/DME RNP-0.3 NA. When local altimeter setting not received use Winfield-Arkansas City altimeter setting and increase LPV DA to 1377 feet, LNAV/VNAV DA to 1560 feet and all MDA 100 feet; increase LPV all Cats, LNAV/VNAV all Cats, LNAV Cats C and D and Circling Cats C and D visibility ¼ SM. Baro-VNAV NA when using Winfield-Arkansas City altimeter setting. Visibility reduction by helicopters NA.

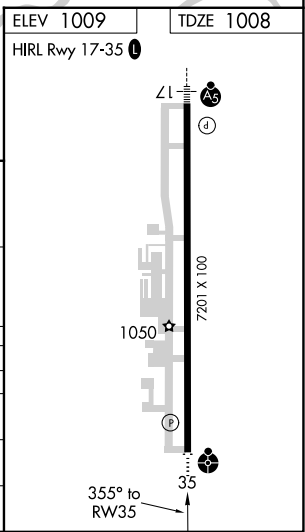
**ODALS**

**MISSED APPROACH:**  
Climb to 2800 direct TOMHO and hold.

<b>ASOS</b> <b>134.075</b>	<b>KANSAS CITY CENTER</b> <b>127.8 319.1</b>	<b>UNICOM</b> <b>123.0 (CTAF) ①</b>
-------------------------------	---	--



ELEV 1009		TDZE 1008	
HIRL Rwy 17-35 ①			
CATEGORY	A	B	C
LPV DA	1295-1		287 (300-1)
LNAV/VNAV DA	1478-1¾		470 (500-1¾)
LNAV MDA	1540-1	532 (600-1)	1540-1½ 532 (600-1½)
			1540-1¾ 532 (600-1¾)
CIRCLING	1540-1 531 (600-1)	1580-1 571 (600-1)	1800-2½ 791 (800-2½)
			1880-2¾ 871 (900-2¾)



SC-1, 03 OCT 2024 to 31 OCT 2024

SC-1, 03 OCT 2024 to 31 OCT 2024