

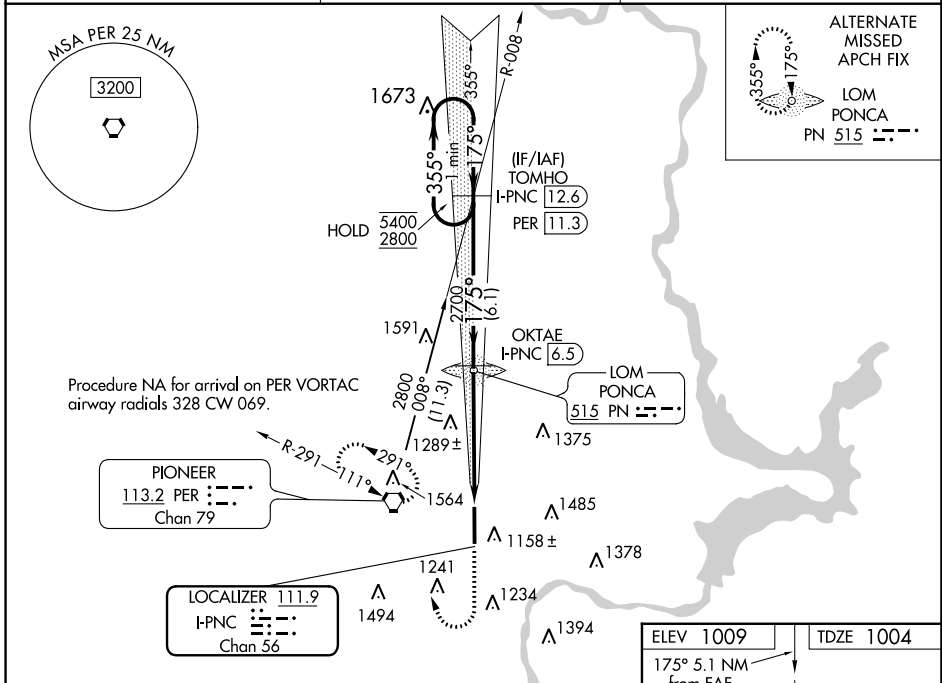
LOC/DME I-PNC 111.9 Chan 56	APP CRS 175°	Rwy Idg 7201 TDZE 1004 Apt Elev 1009
---	------------------------	---

ILS or LOC RWY 17

PONCA CITY RGNL (PNC)

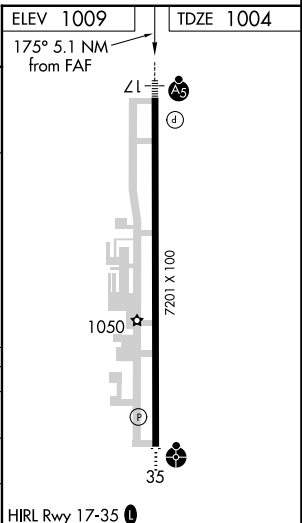
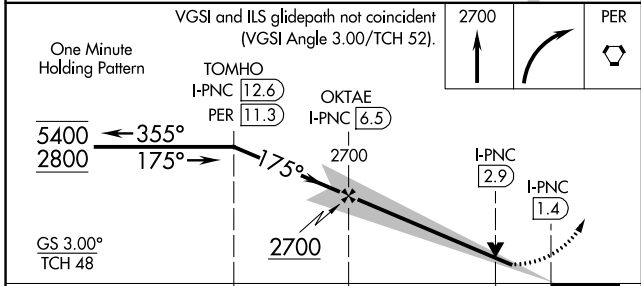
DME required.	MALSR	MISSED APPROACH: Climb to 2700 then right turn direct PER VORTAC and hold.
NA For inop ALS, increase S-LOC 17 visibility Cat C/D to 1 1/2 SM. NA		

ASOS 134.075	KANSAS CITY CENTER 127.8 319.1	UNICOM 123.0 (CTAF)
------------------------	--	-------------------------------



ALTERNATE MISSED APCH FIX

LOM PONCA
PN **515**



CATEGORY	A	B	C	D
S-ILS 17	1204-1/2		200 (200-1/2)	
S-LOC 17	1520-1/2 516 (600-1/2)		1520-1 516 (600-1)	
CIRCLING	1520-1 511 (600-1)	1580-1 571 (600-1)	1800-2 1/4 791 (800-2 1/4)	1880-2 3/4 871 (900-2 3/4)

SC-1, 31 OCT 2024 to 28 NOV 2024

SC-1, 31 OCT 2024 to 28 NOV 2024