

WAAS CH <b>60922</b> <b>W13A</b>	APP CRS <b>128°</b>	Rwy Idg TDZE <b>632</b> Apt Elev <b>661</b>
--	------------------------	---

# RNAV (GPS) RWY 13

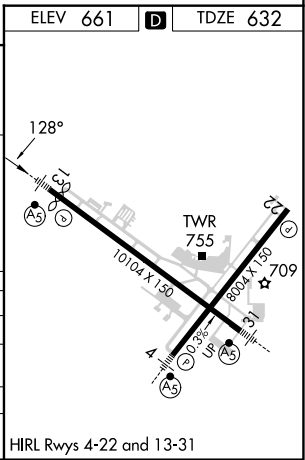
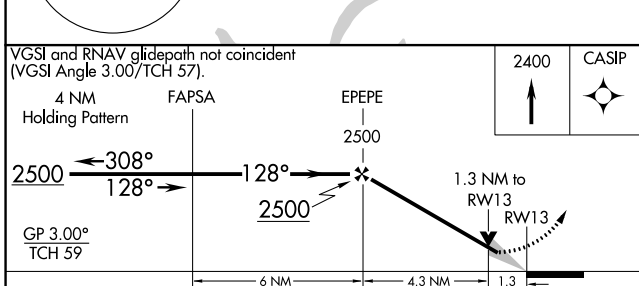
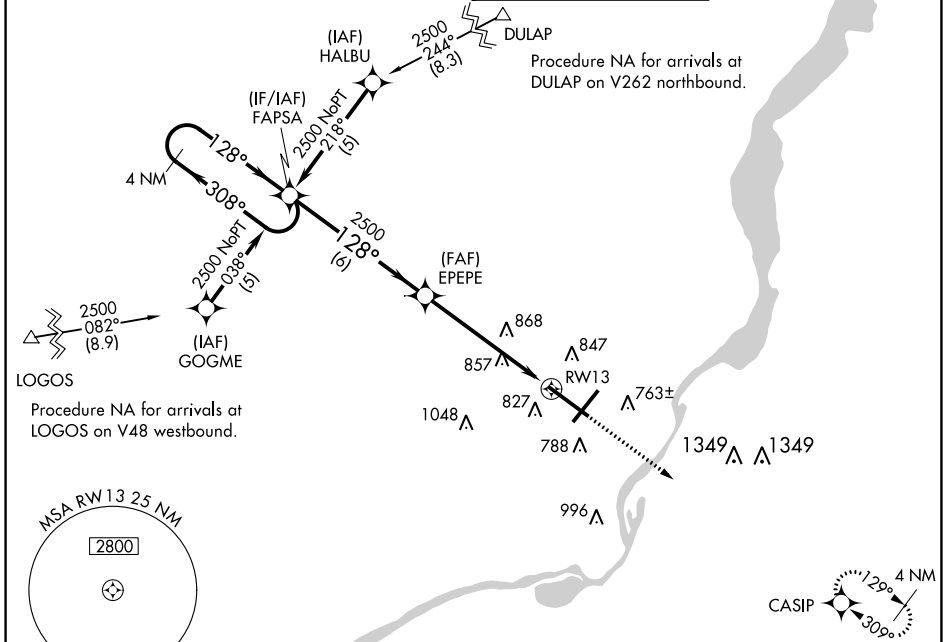
GENERAL DOWNING-PEORIA INTL (PIA)

**RNP APCH - GPS.**

For uncompensated Baro-VNAV systems, LNAV/VNAV NA below -19°C or above 54°C. When local altimeter setting not received, use Lincoln altimeter setting increase LPV DA to 1110 feet and all visibilities ¼ SM. Increase LNAV/VNAV DA to 1168 feet and all visibilities ½ SM. Increase all MDAs 100 feet and LNAV visibility Cat C/D ¼ SM, and Circling visibility Cat C/D ½ SM. Baro-VNAV and VDP NA when using Lincoln altimeter setting. For inop ALS, increase LPV all Cats visibility to 1½ SM, LNAV Cat A/B visibility to 1 SM and Cat C/D visibility to 1½ SM. For inop ALS when using Lincoln altimeter setting, increase LPV visibility all Cats to 1½ SM and LNAV Cat A/B visibility to 1 SM.

**MALSR**  
MISSED APPROACH: Climb to 2400 direct CASIP and hold.

ATIS <b>126.1 282.2</b>	SAINT LOUIS APP CON <b>125.8 269.2</b>	PEORIA TOWER <b>124.0 353.85</b>	GND CON <b>121.85 348.6</b>
----------------------------	---	-------------------------------------	--------------------------------



CATEGORY	A	B	C	D
LPV DA		1025-¾	389 (400-¾)	
LNAV/VNAV DA		1083-1	447 (500-1)	
LNAV MDA	1120-½	484 (500-½)	1120-1	484 (500-1)
<b>C</b> CIRCLING	1160-1	499 (500-1)	1180-1½ 519 (600-1½)	1400-2¼ 739 (800-2¼)

EC-3, 11 JUL 2024 to 08 AUG 2024

EC-3, 11 JUL 2024 to 08 AUG 2024