

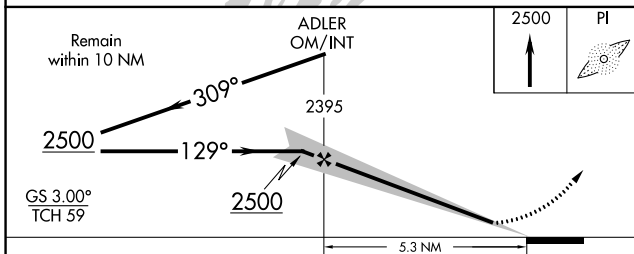
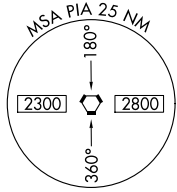
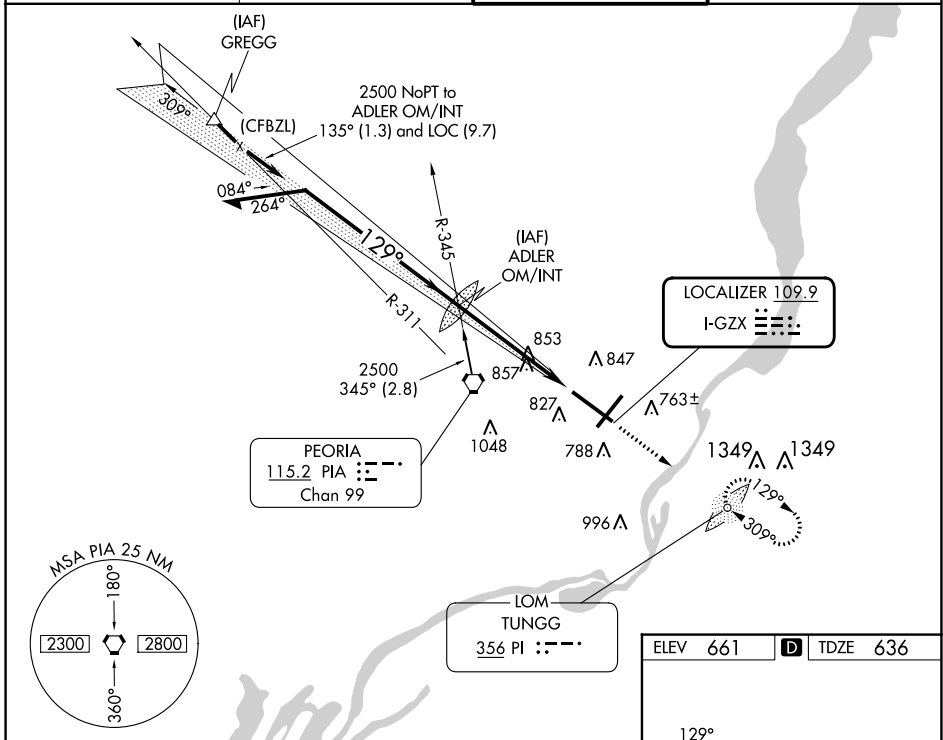
LOC I-GZX <b>109.9</b>	APP CRS <b>129°</b>	Rwy Idg <b>9604</b>
		TDZE <b>636</b>
		Apt Elev <b>661</b>

# ILS or LOC RWY 13

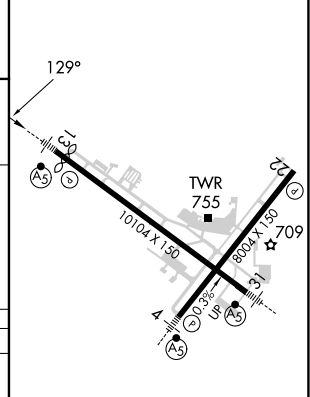
GENERAL DOWNING-PEORIA INTL (PIA)

ADF required for missed approach.		MALSR	MISSED APPROACH: Climb to 2500 direct PI LOM and hold.
▼ For inoperative MALSR, increase S-LOC 13 Cat C/D visibility to 1½ mile. ▲ Circling Rwy 13, 31 NA at night. * RVR 1800 authorized with the use of FD or AP or HUD to DA.			

ATIS <b>126.1 282.2</b>	SAINT LOUIS APP CON <b>125.8 269.2</b>	PEORIA TOWER <b>124.0 353.85</b>	GND CON <b>121.85 348.6</b>
----------------------------	---	-------------------------------------	--------------------------------



ELEV 661	TDZE 636
----------	----------



CATEGORY	A	B	C	D
S-ILS 13	*836/24		200 (200-½)	
S-LOC 13	1120/24	484 (500-½)	1120/50	484 (500-1)
CIRCLING	1160-1	499 (500-1)	1180-1½ 519 (600-1½)	1400-2¼ 739 (800-2¼)

HIRL Rwy 4-22 and 13-31					
FAF to MAP 5.3 NM					
Knots	60	90	120	150	180
Min:Sec	5:18	3:32	2:39	2:07	1:46

EC-3, 08 AUG 2024 to 05 SEP 2024

EC-3, 08 AUG 2024 to 05 SEP 2024