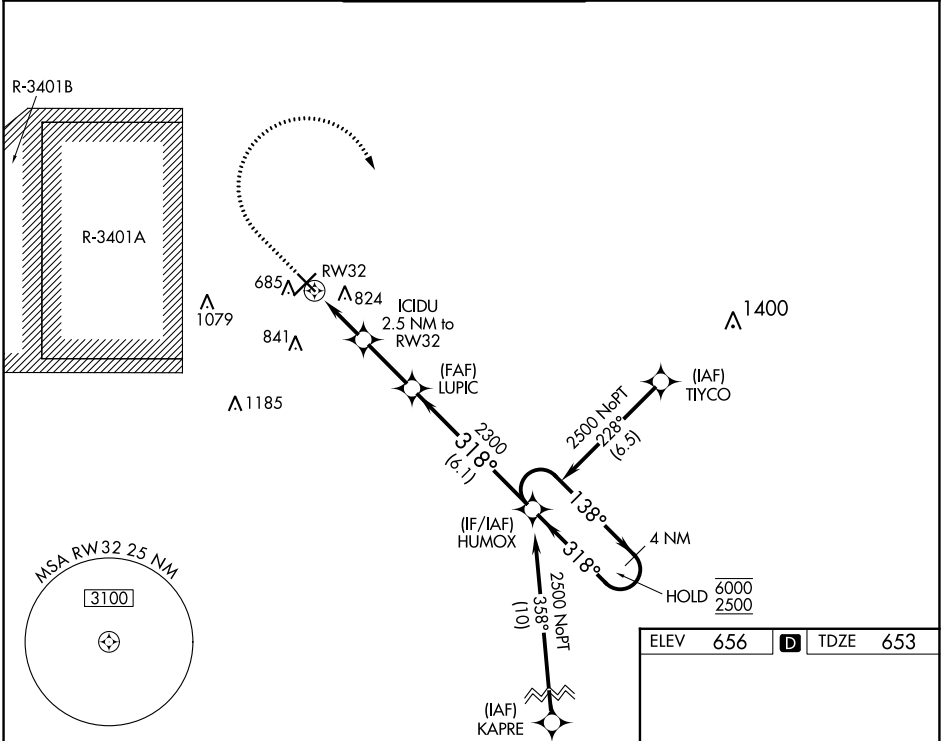


WAAS CH <b>50399</b> <b>W32A</b>	APP CRS <b>318°</b>	Rwy Idg TDZE Apt Elev	<b>5000</b> <b>653</b> <b>656</b>
--	------------------------	-----------------------------	---

# RNAV (GPS) RWY 32

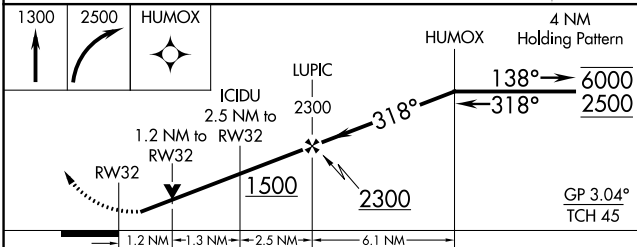
COLUMBUS MUNI (BAK)

RNP APCH - GPS.		MISSED APPROACH: Climb to 1300, then climbing right turn to 2500 direct HUMOX and hold.					
<p><b>▼</b> Rwy 32 helicopter visibility reduction below <math>\frac{3}{4}</math> SM NA. For uncompensated Baro-VNAV systems, LNAV/VNAV NA below -16°C or above 54°C.</p> <p><b>▲</b></p>		AWOS-3 <b>119.75</b>	INDIANAPOLIS APP CON <b>134.85 317.8</b>	COLUMBUS TOWER ★ <b>118.6 (CTAF) 0</b>	GND CON <b>121.6</b>	CLNC DEL <b>134.85</b>	UNICOM <b>122.95</b>

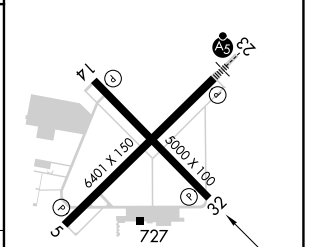


EC-2, 03 OCT 2024 to 31 OCT 2024

EC-2, 03 OCT 2024 to 31 OCT 2024



ELEV	656	TDZE	653
------	-----	------	-----



CATEGORY	A	B	C	D
LPV DA		903-1	250 (300-1)	
LNAV/VNAV DA		1056-1 $\frac{1}{8}$	403 (400-1 $\frac{1}{8}$ )	
LNAV MDA	1080-1	427 (500-1)	1080-1 $\frac{1}{4}$	427 (500-1 $\frac{1}{4}$ )

MIRL Rwy 14-32  
HIRL Rwy 5-23  
REIL Rws 5, 14, and 32