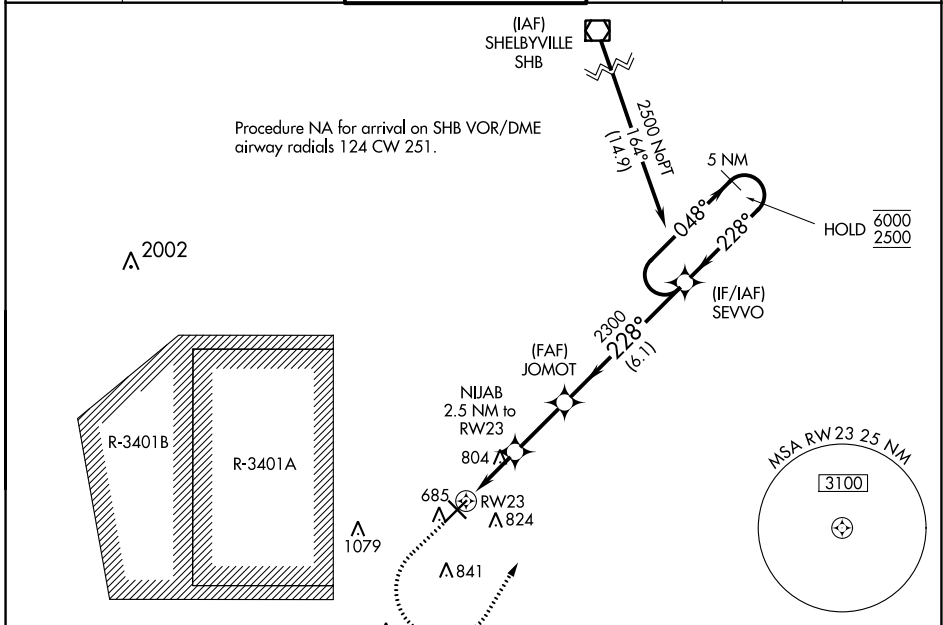


WAAS CH 90399 W23A	APP CRS 228°	Rwy Idg TDZE 656 Apt Elev 656	6401
----------------------------------------	------------------------	---------------------------------------------------	-------------

RNAV (GPS) RWY 23

COLUMBUS MUNI (BAK)

RNP APCH - GPS.		MALSR	MISSED APPROACH: Climb to 1200, then climbing left turn to 2500 direct SEVVO and hold.		
For inop ALS, increase LNAV Cat C/D visibility to 1½ SM.					
AWOS-3 119.75	INDIANAPOLIS APP CON 134.85 317.8	COLUMBUS TOWER ★ 118.6 (CTAF)	GND CON 121.6	CLNC DEL 134.85	UNICOM 122.95



EC-2, 18 MAY 2023 to 15 JUN 2023

EC-2, 18 MAY 2023 to 15 JUN 2023

ELEV 656		TDZE 656
1200 2500 SEVVO	SEVVO 5 NM Holding Pattern 048° → <u>6000</u> ← 228° <u>2500</u>	
JOMOT 2300 NIJAB 2.5 NM to RW23 RW23 1.1 NM to RW23 RW23 1.4 NM to RW23 RW23 2.5 NM to RW23 GP 3.00° TCH 52		
CATEGORY A B C D LPV DA 906-½ 250 (300-½) LNAV MDA 1060-½ 404 (500-½) 1060-¾ 404 (500-¾)		
MRL Rwy 14-32 HIRL Rwy 5-23 REIL Rws 5, 14, and 32		