

# SUMMA TWO DEPARTURE

AL-582 (FAA)

SEATTLE-TACOMA INTL (SEA)  
SEATTLE, WASHINGTON

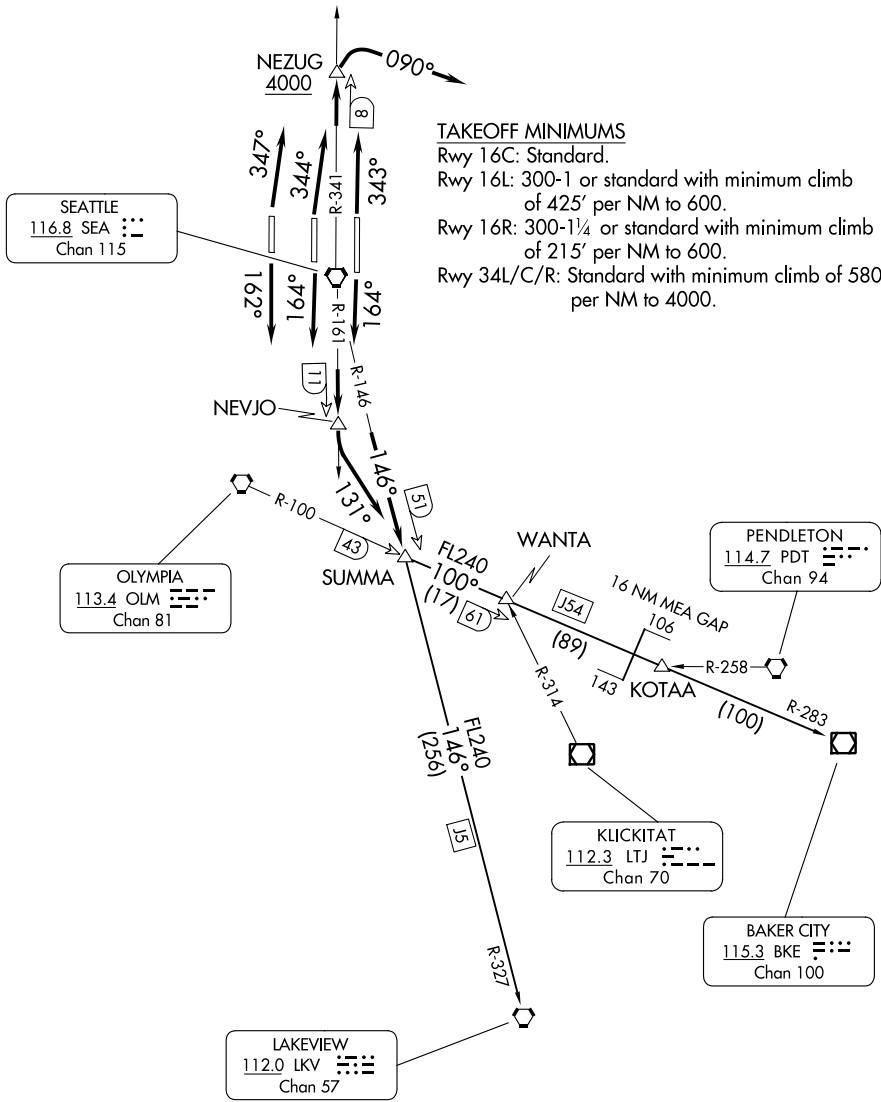
D-ATIS  
118.0  
CPDLC  
SEATTLE DEP CON  
119.2 284.7 (Rwys 34R/C/L) (N)  
120.4 269.125 (Rwys 16L/C/R) (S)

**TOP ALTITUDE:  
ASSIGNED BY ATC**

NOTE: RADAR and DME required.

### TAKEOFF MINIMUMS

Rwy 16C: Standard.  
Rwy 16L: 300-1 or standard with minimum climb of 425' per NM to 600.  
Rwy 16R: 300-1½ or standard with minimum climb of 215' per NM to 600.  
Rwy 34L/C/R: Standard with minimum climb of 580' per NM to 4000.



NOTE: Chart not to scale.

(CONTINUED ON FOLLOWING PAGE)

# SUMMA TWO DEPARTURE

SEATTLE, WASHINGTON  
SEATTLE-TACOMA INTL (SEA)

NW-1, 03 OCT 2024 to 31 OCT 2024

NW-1, 03 OCT 2024 to 31 OCT 2024