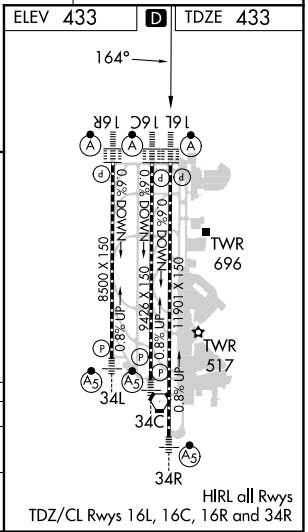
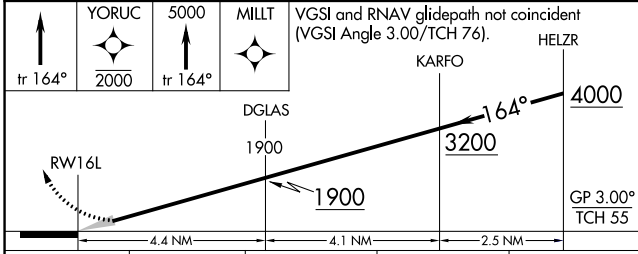
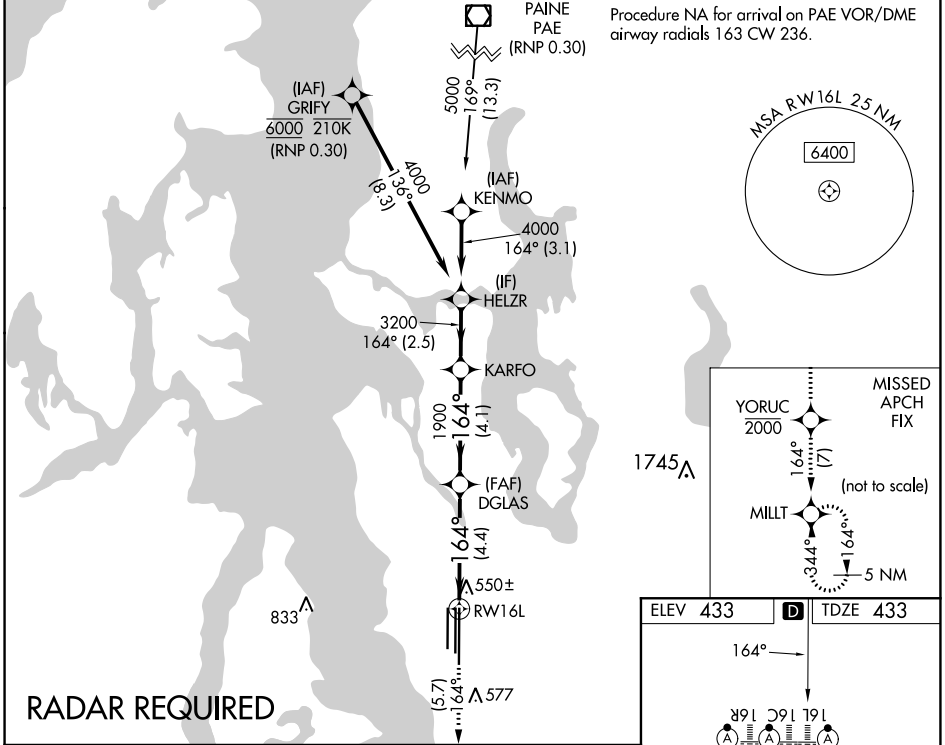


APP CRS	Rwy Idg	<b>11901</b>
<b>164°</b>	TDZE	<b>433</b>
	Apt Elev	<b>433</b>

# RNAV (RNP) Z RWY 16L

SEATTLE-TACOMA INTL (SEA)

<p><b>▼</b> For uncompensated Baro-VNAV systems, procedure NA below -6°C (22°F) or above 54°C (130°F). Simultaneous approach authorized with Rwy 16R. GPS required. Use of FD or AP providing RNAV track guidance required during simultaneous operations. For inop ALS, increase RNP 0.30 all Cats visibility to 1 3/8 mile.</p>	<p>SEATTLE TOWER</p> <p><b>119.9 239.3</b> (Rwys 16L, 16C, 34C, 34R)</p> <p><b>120.95 239.3</b> (Rwys 16R, 34L)</p>		GND CON	CLNC DEL	CPDLC
	D-ATIS	SEATTLE APP CON	GND CON	CLNC DEL	CPDLC
<b>118.0</b>	<b>133.65 273.45</b>	<b>121.7</b>	<b>128.0</b>		



NW-1, 03 OCT 2024 to 31 OCT 2024

NW-1, 03 OCT 2024 to 31 OCT 2024