

MOUNTAIN TWO DEPARTURE

AL-582 (FAA)

SEATTLE-TACOMA INTL (SEA)
SEATTLE, WASHINGTON

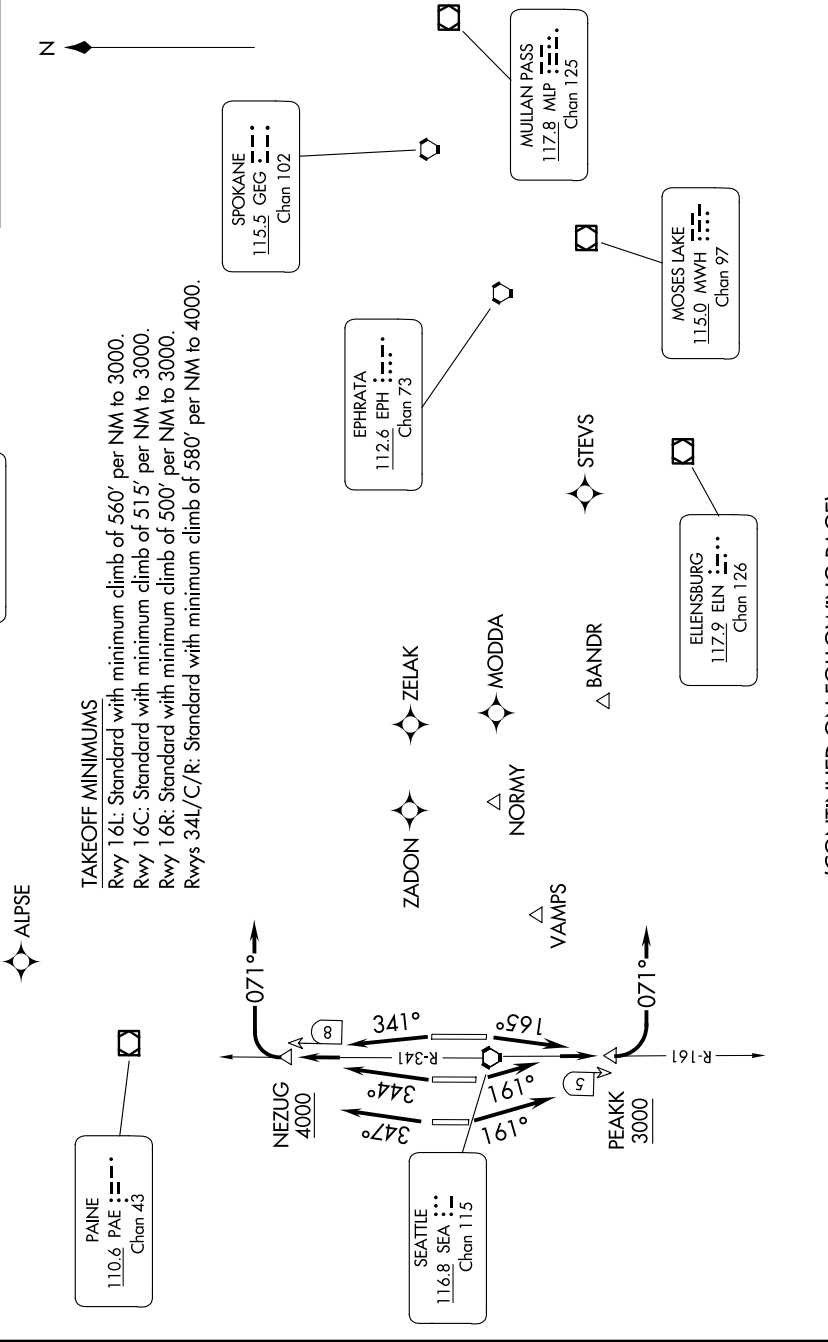
NW-1, 16 APR 2026 to 14 MAY 2026

SEATTLE DEP CON
119.2 284.7

RADAR and DME required.

PRINCETON
113.9 YDC
Chan 86

**TOP ALTITUDE:
ASSIGNED BY ATC**



(CONTINUED ON FOLLOWING PAGE)

NW-1, 16 APR 2026 to 14 MAY 2026