

LOC/DME I-SNQ <b>110.3</b> Chan 40	APP CRS <b>164°</b>	Rwy Idg <b>11901</b> TDZE <b>432</b> Apt Elev <b>432</b>
--	------------------------	---

# ILS or LOC RWY 16L

## SEATTLE-TACOMA INTL (SEA)

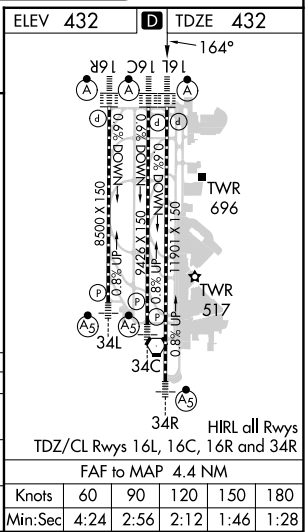
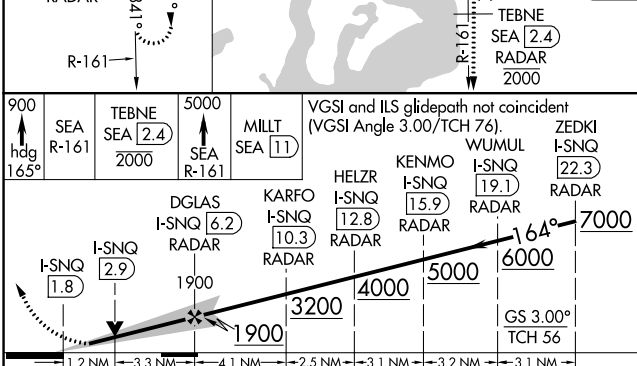
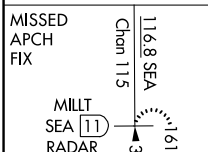
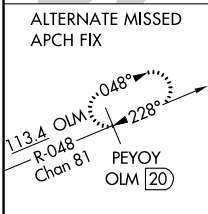
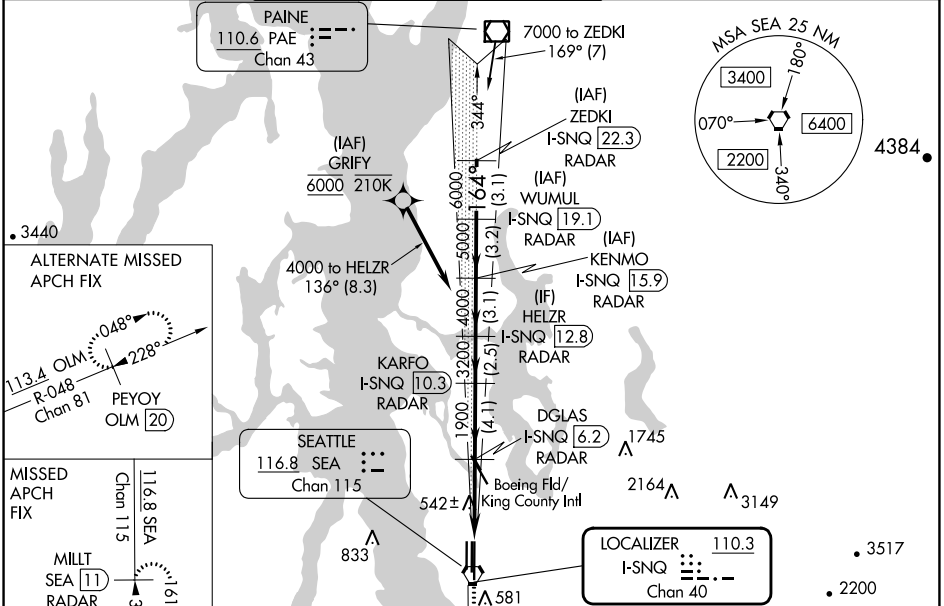
DME or RADAR required. RNP APCH-GPS, from GRIFY.

Simultaneous approach authorized.

ALSF-2

MISSED APPROACH: Climb to 900 on heading 165° then on SEA VORTAC R-161 to cross TEBNE/SEA 2.4 DME/RADAR at or below 2000 then climb to 5000 on SEA VORTAC R-161 to MILLT/SEA 11 DME/RADAR and hold, continue climb-in-hold to 5000.

D-ATIS <b>118.0</b>	SEATTLE APP CON <b>133.65 273.45</b>	SEATTLE TOWER <b>119.9 239.3</b> (Rwys 16L, 16C, 34C, 34R) <b>120.95 239.3</b> (Rwys 16R, 34L)	GND CON <b>121.7</b>	CLNC DEL <b>128.0</b>	CPDLC
------------------------	---	--	-------------------------	--------------------------	-------



CATEGORY	A	B	C	D
S-ILS 16L	697/20 265 (300-1/2)	632/18 200 (200-1/2)		
S-LOC 16L	880/24 448 (500-1/2)	880/45 448 (500-7/8)		
CIRCLING	1000-1 568 (600-1)	1000-1 1/2 568 (600-1/2)	1000-2 568 (600-2)	

NW-1, 03 OCT 2024 to 31 OCT 2024

NW-1, 03 OCT 2024 to 31 OCT 2024