

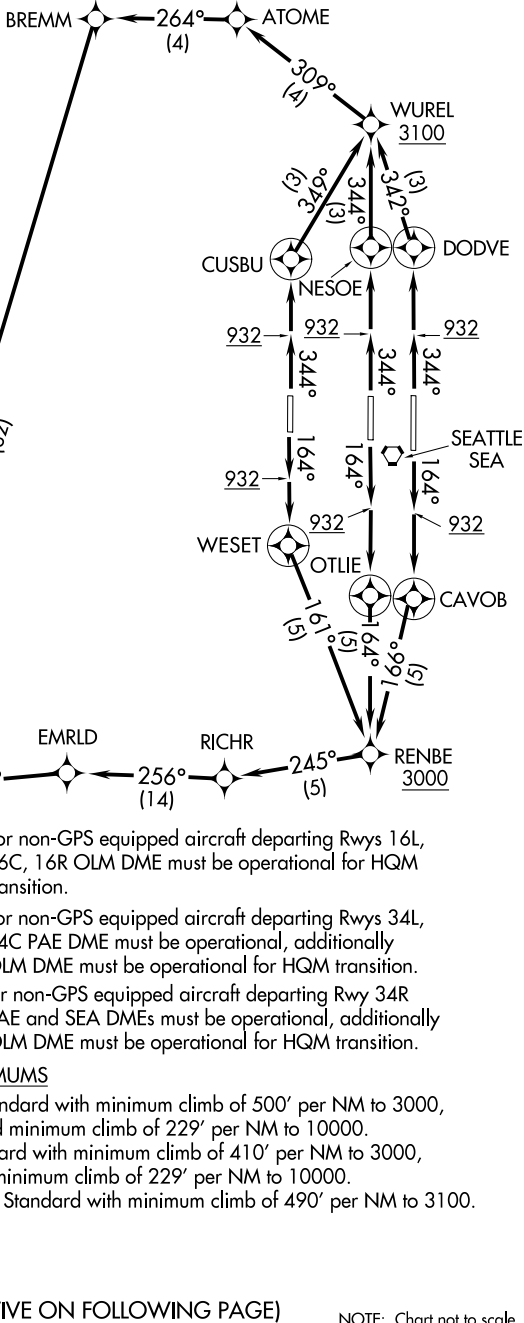
# HAROB SIX DEPARTURE (RNAV)

AL-582 (FAA)

D-ATIS  
118.0  
CLNC DEL  
128.0  
CPDLC  
SEATTLE DEP CON  
120.4 395.0

**TOP ALTITUDE:  
ASSIGNED BY ATC**

- NOTE: RNAV 1.
- NOTE: RADAR required.
- NOTE: DME/DME/IRU or GPS required.



NW-1, 03 OCT 2024 to 31 OCT 2024

NW-1, 03 OCT 2024 to 31 OCT 2024

(NARRATIVE ON FOLLOWING PAGE)

NOTE: Chart not to scale.

# HAROB SIX DEPARTURE (RNAV)