

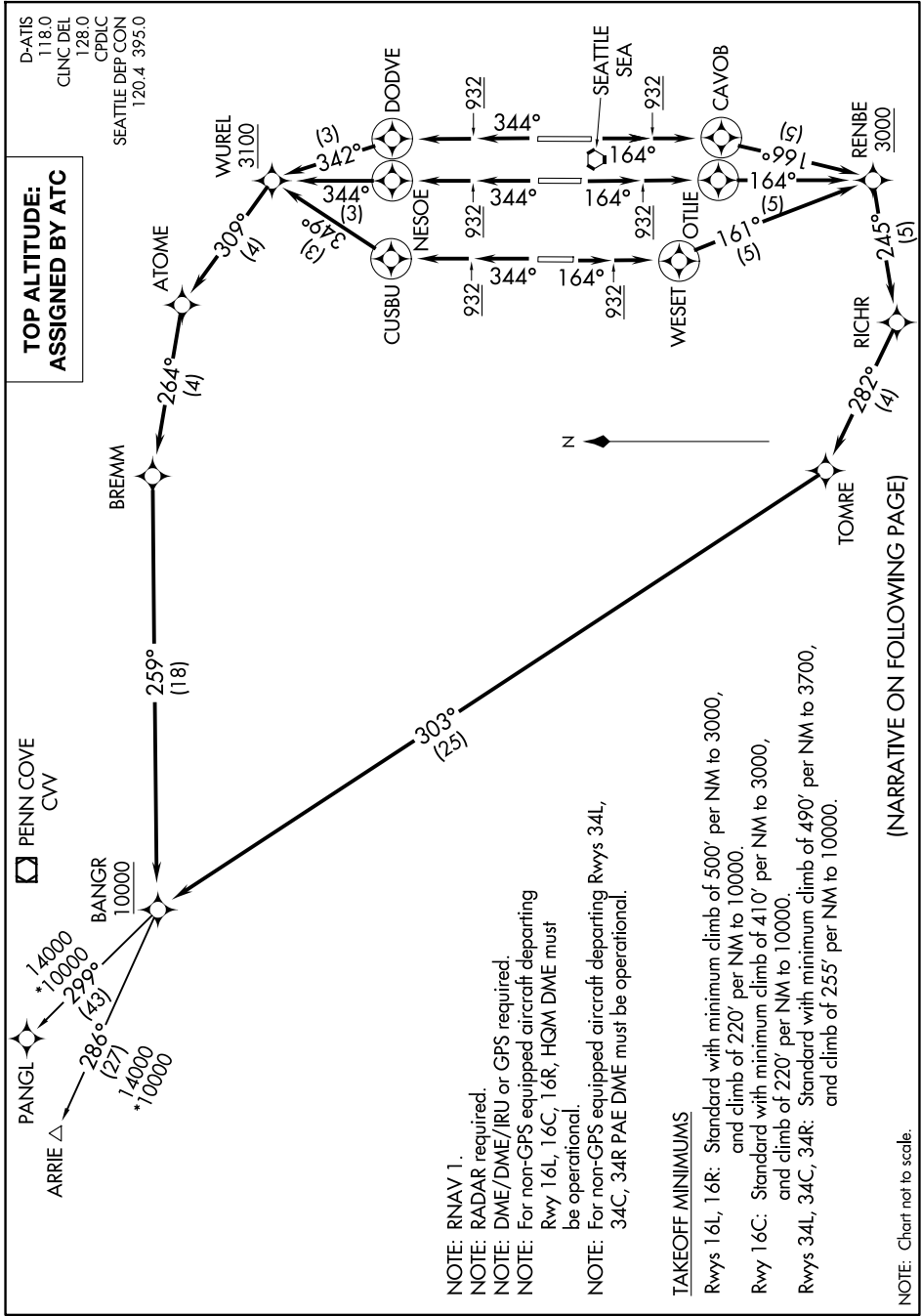
BANGR NINE DEPARTURE (RNAV)

AL-582 (FAA)

SEATTLE-TACOMA INTL (SEA)
SEATTLE, WASHINGTON

D-ATIS 118.0
CLNC DEL 128.0
CPDLC
SEATTLE DEP CON 120.4 395.0

**TOP ALTITUDE:
ASSIGNED BY ATC**



NW-1, 16 APR 2026 to 14 MAY 2026

PENN COVE CW

- NOTE: RNAV 1.
- NOTE: RADAR required.
- NOTE: DME/DME/IRU or GPS required.
- NOTE: For non-GPS equipped aircraft departing Rwy 16L, 16C, 16R, HGM DME must be operational.
- NOTE: For non-GPS equipped aircraft departing Rwys 34L, 34C, 34R PAE DME must be operational.

TAKEOFF MINIMUMS

- Rwys 16L, 16R: Standard with minimum climb of 500' per NM to 3000, and climb of 220' per NM to 10000.
- Rwy 16C: Standard with minimum climb of 410' per NM to 3000, and climb of 220' per NM to 10000.
- Rwys 34L, 34C, 34R: Standard with minimum climb of 490' per NM to 3700, and climb of 255' per NM to 10000.

(NARRATIVE ON FOLLOWING PAGE)

NOTE: Chart not to scale.

NW-1, 16 APR 2026 to 14 MAY 2026

BANGR NINE DEPARTURE (RNAV)