

MZULO THREE DEPARTURE (RNAV)

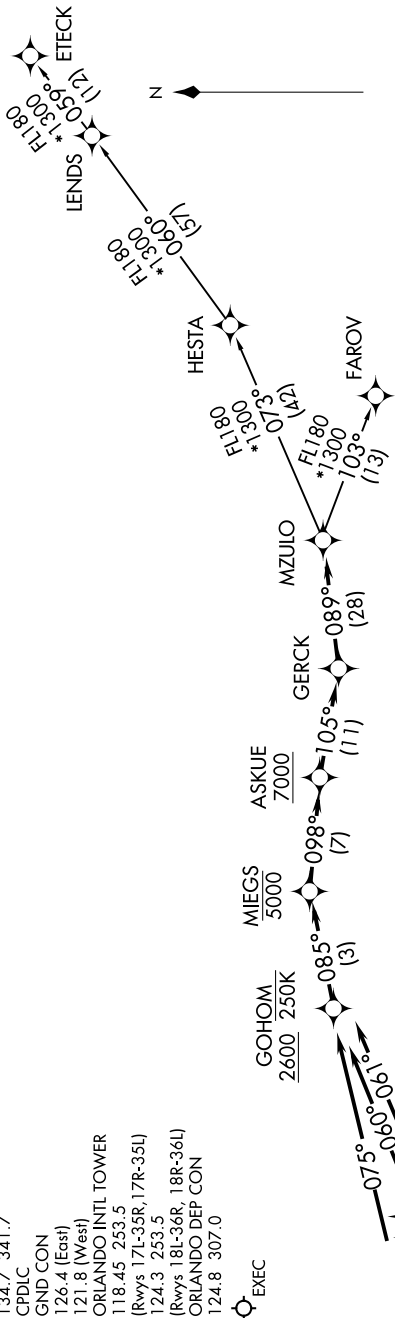
SE-3, 03 OCT 2024 to 31 OCT 2024

RNAV 1 - DME/DME/IRU or GPS.

RADAR required.

- D-ATIS DEP 120.525
- CLNC DEL 134.7 341.7
- CPDLC 126.4 (East)
- GND CON 121.8 (West)
- ORLANDO INTL TOWER 118.45 253.5
- (Rwys 17L-35R, 17R-35L) 124.3 253.5
- (Rwys 18L-36R, 18R-36L) ORLANDO DEP CON 124.8 307.0
- EXEC

MZULO THREE DEPARTURE (RNAV)



TAKEOFF MINIMUMS

Rwys 17L/R, 18L/R, 35L/R, 36L/R:
Standard with minimum climb of 500' per NM to 600.

NOTE: Jet aircraft only.

(NARRATIVE ON FOLLOWING PAGE)

NOTE: Chart not to scale.

SE-3, 03 OCT 2024 to 31 OCT 2024