

LOC/DME I-DDO <b>110.5</b> Chan 42	APP CRS <b>005°</b>	Rwy Idg TDZE Apt Elev	<b>10000</b> <b>88</b> <b>96</b>
--	------------------------	-----------------------------	--

# ILS or LOC RWY 35L

ORLANDO INTL (MCO)

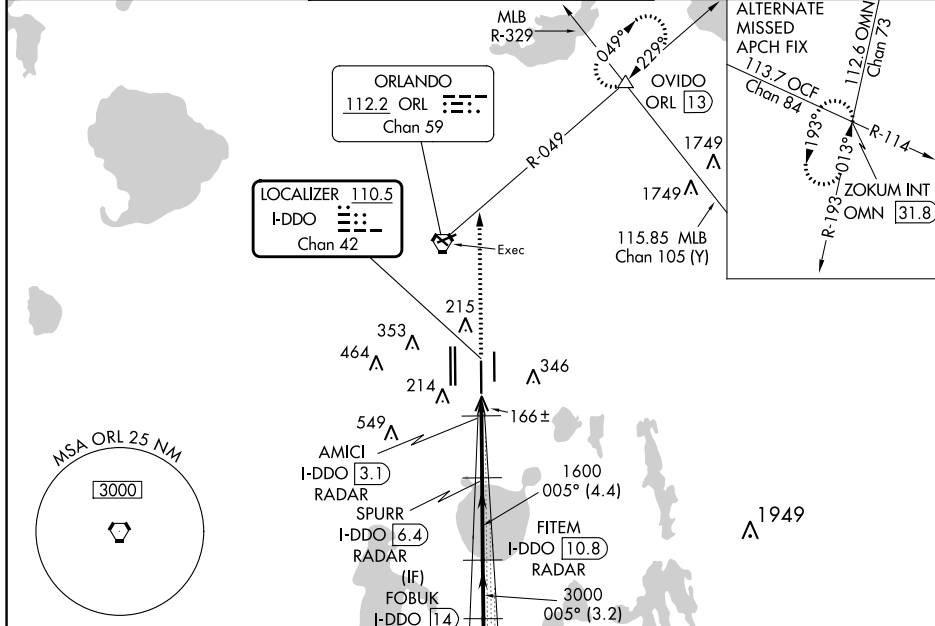
**RADAR** required for procedure entry. DME or RADAR required.

**Bright lights** on highway midway between Rwy 35L and Rwy 35R may be mistaken for runway lights. Simultaneous approach authorized. When using alternate missed approach, simultaneous approach NA.

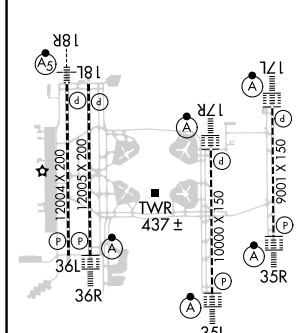


**MISSED APPROACH:** Climb to 3000 on heading 005° and ORL VORTAC R-049 to OVIDO INT/ORL 13 DME and hold.

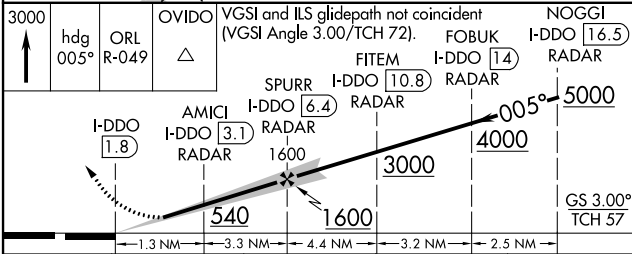
D-ATIS ARR <b>121.25</b> DEF <b>120.525</b>	ORLANDO APP CON <b>124.8 307.0</b>	ORLANDO TOWER <b>118.45 253.5</b> (Rwys 17L-35R, 17R-35L) <b>124.3 253.5</b> (Rwys 18L-36R, 18R-36L)	GND CON (East) <b>126.4</b> (West) <b>121.8</b>	CLNC DEL <b>134.7</b> <b>341.7</b>	CPDLC
---	---------------------------------------	--	--	--	-------



ELEV 96	<b>D</b> TDZE 88
---------	------------------



Knots	60	90	120	150	180
Min:Sec	4:36	3:04	2:18	1:50	1:32



CATEGORY	A	B	C	D
S-ILS 35L	288/18 200 (200-½)			
S-LOC 35L	420/24	332 (400-½)	420/26	332 (400-½)
<b>C</b> CIRCLING	740-1	644 (700-1)	740-1¾ 644 (700-1¾)	740-2 644 (700-2)

SE-3, 31 OCT 2024 to 28 NOV 2024

SE-3, 31 OCT 2024 to 28 NOV 2024