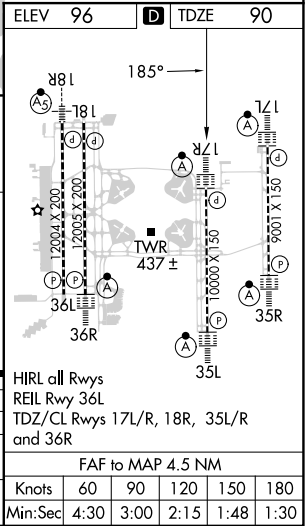
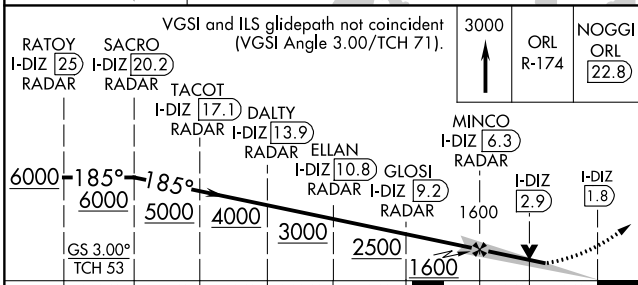
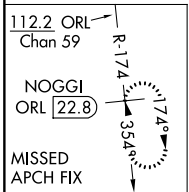
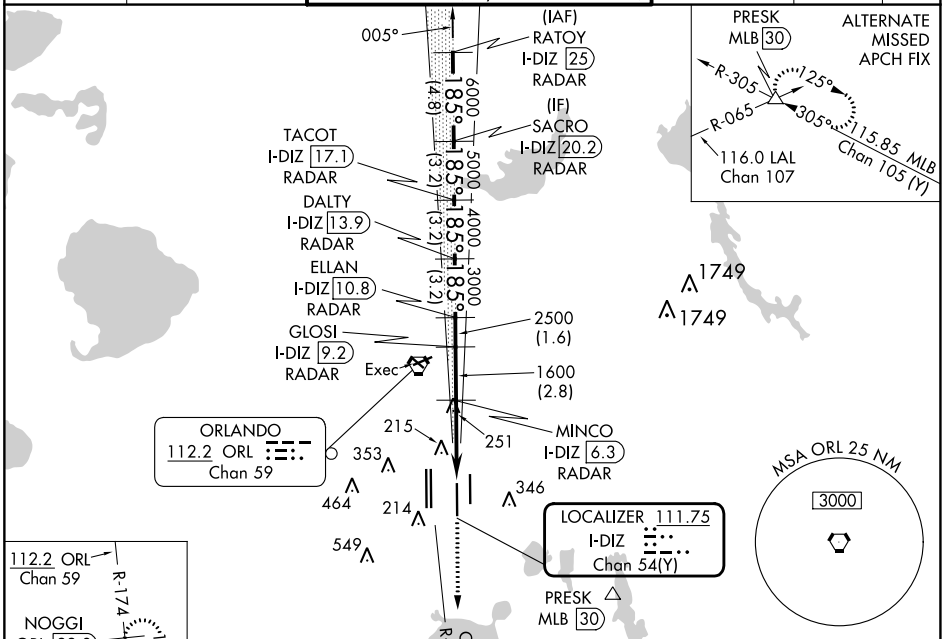


LOC/DME I-DIZ 111.75 Chan 54(Y)	APP CRS 185°	Rwy Idg 10000 TDZE 90 Apt Elev 96
---	------------------------	--

ILS or LOC RWY 17R

ORLANDO INTL (MCO)

RADAR required for procedure entry. DME or RADAR required.		ALSF-2 	MISSED APPROACH: Climb to 3000 on ORL VORTAC R-174 to NOGGI/ ORL 22.8 DME and hold.
<p>Simultaneous approach authorized. When using alternate missed approach, simultaneous approach NA. Bright lights on highway midway between Rwy 17L and Rwy 17R may be mistaken for runway lights.</p>			
D-ATIS ARR 121.25 DEP 120.525	ORLANDO APP CON 124.8 307.0	ORLANDO TOWER 118.45 253.5 (Rwys 17L-35R, 17R-35L) 124.3 253.5 (Rwys 18L-36R, 18R-36L)	GND CON 126.4 (East) 121.8 (West)
		CLNC DEL 134.7 341.7	CPDLC



SE-3, 31 OCT 2024 to 28 NOV 2024

SE-3, 31 OCT 2024 to 28 NOV 2024