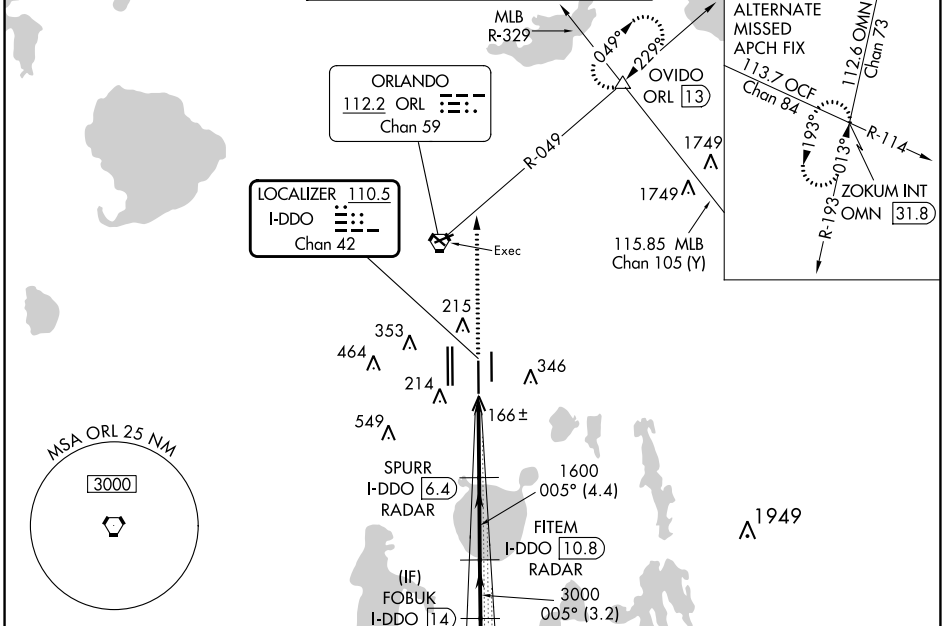


LOC/DME I- DDO 110.5 Chan 42	APP CRS 005°	Rwy Idg 10000 TDZE 88 Apt Elev 96
---	------------------------	--

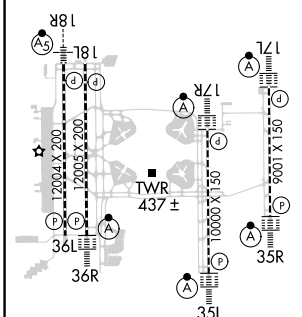
ILS RWY 35L (CAT II & III)

ORLANDO INTL (MCO)

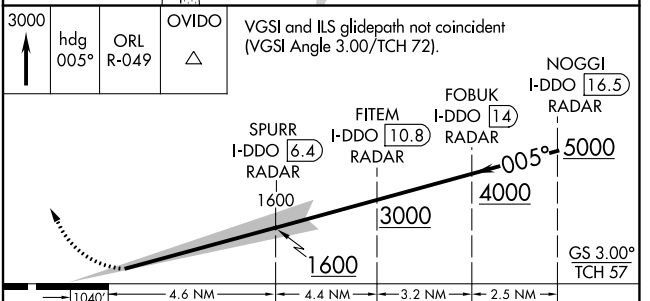
RADAR required for procedure entry. DME or RADAR required.		ALSF-2 	MISSED APPROACH: Climb to 3000 on heading 005° and ORL VORTAC R-049 to OVIDO INT/ORL 13 DME and hold.			
<p>▼ Bright lights on highway midway between Rwy 35L and Rwy 35R may be mistaken for runway lights. Simultaneous approach authorized. When using alternate missed approach, simultaneous approach NA.</p>						
D-ATIS ARR 121.25 DEP 120.525	ORLANDO APP CON 124.8 307.0	ORLANDO TOWER 118.45 253.5 (Rwys 17L-35R, 17R-35L) 124.3 253.5 (Rwys 18L-36R, 18R-36L)		GND CON (East) 126.4 (West) 121.8	CLNC DEL 134.7 341.7	CPDLC



ELEV 96	D	TDZE 88
----------------	----------	----------------



HIRL all Rwys
REIL Rwy 36L
TDZ/CL Rwys 17L/R, 18R,
35L/R and 36R



CATEGORY	A	B	C	D
S-ILS 35L	CAT II RA 106/12 100 DA 188			
S-ILS 35L	CAT III RVR 06			

CATEGORY II & III ILS - SPECIAL AIRCREW & AIRCRAFT CERTIFICATION REQUIRED

SE-3, 31 OCT 2024 to 28 NOV 2024

SE-3, 31 OCT 2024 to 28 NOV 2024