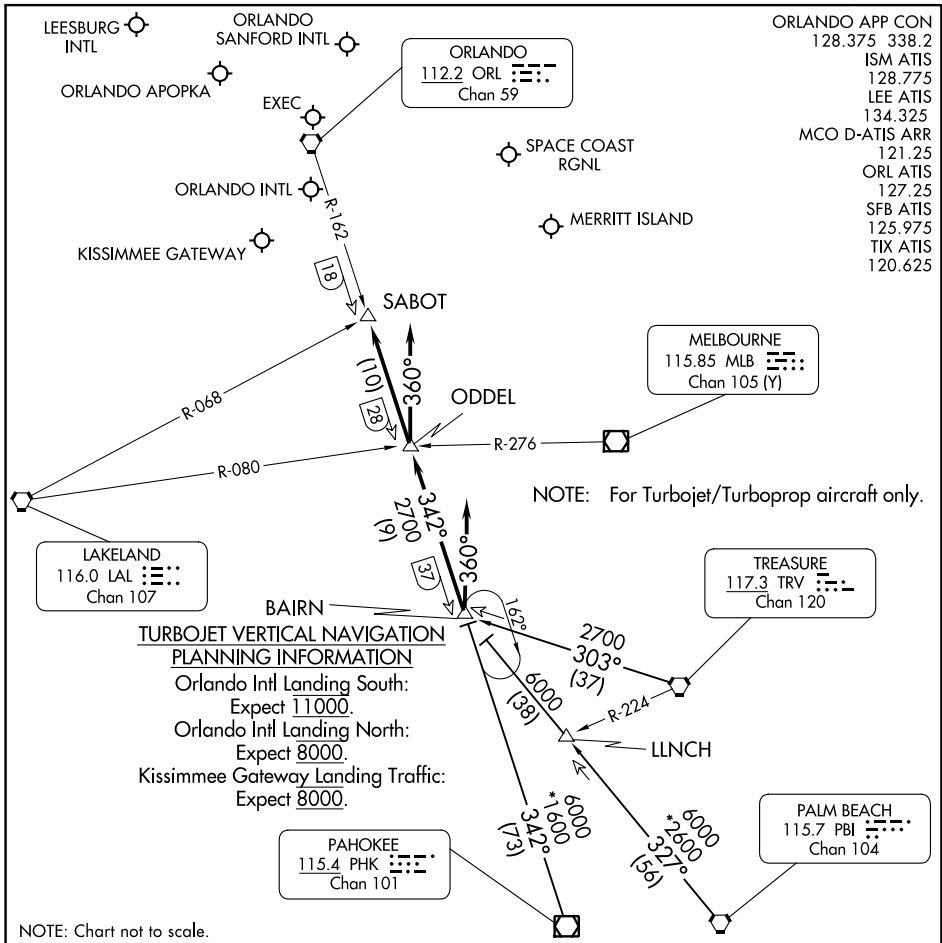


GOOFY SEVEN ARRIVAL

ORLANDO, FLORIDA



SE-3, 08 AUG 2024 to 05 SEP 2024

SE-3, 08 AUG 2024 to 05 SEP 2024

TURBOJET VERTICAL NAVIGATION PLANNING INFORMATION
 Orlando Intl Landing South: Expect 11000.
 Orlando Intl Landing North: Expect 8000.
 Kissimmee Gateway Landing Traffic: Expect 8000.

NOTE: Chart not to scale.

ARRIVAL ROUTE DESCRIPTION

- PAHOKEE TRANSITION (PHK.GOOFY7):** From over PHK VOR/DME on PHK R-342 to BAIRN INT. Thence. . .
- PALM BEACH TRANSITION (PBI.GOOFY7):** From over PBI VORTAC on PBI R-327 to BAIRN INT. Thence. . .
- TREASURE TRANSITION (TRV.GOOFY7):** From over TRV VORTAC on TRV R-303 to BAIRN INT. Thence. . .
- ORLANDO INTL:**
 - . . . Rwy 17/18: From over BAIRN INT on ORL VORTAC R-162 to ODDEL INT. Depart ODDEL INT heading 360° for vector to final approach course.
 - . . . Rwy 35/36: Depart BAIRN INT heading 360° for vector to final approach course.
- LEESBURG INTL:** . . . From over BAIRN INT on ORL VORTAC R-162 to SABOT INT. Expect RADAR vectors to the airport.
- ALL OTHER AIRPORTS:** . . . From over BAIRN INT on ORL VORTAC R-162 to SABOT INT. Expect RADAR vectors to final approach course.

GOOFY SEVEN ARRIVAL

ORLANDO, FLORIDA