

CAMP SPRINGS, MARYLAND

RNAV (GPS) RWY 1R

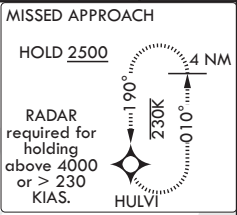
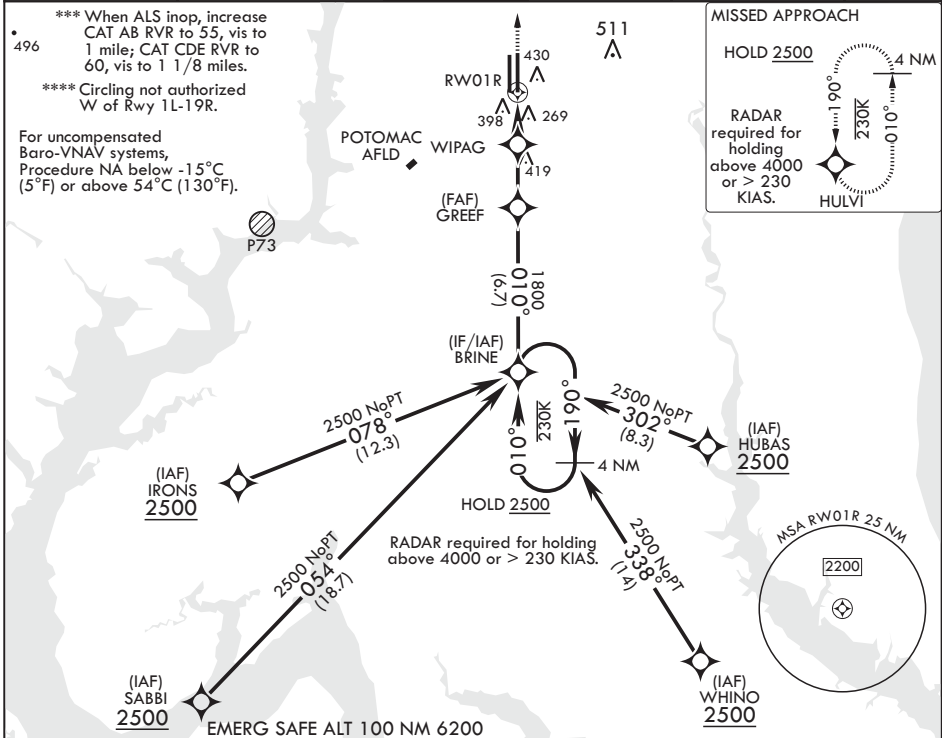
WAAS CH 52206 W01B	APCH CRS 010°	Rwy ldg TDZE 265 Arprt Elev 280
---------------------------------	-------------------------	---

AL-561 (USAF)

JOINT BASE ANDREWS (KADW)

DME/DME RNP-0.3 NA	ALS-1	MISSED APPROACH: Climb to 2500 direct HULVI and hold.
<p>V * When ALS inop increase RVR to 40, vis to 3/4 mile. ** When ALS inop, increase RVR to 60, vis to 1 1/8 miles.</p>		

ATIS 133.675 251.05	POTOMAC APP CON 128.0 335.5	TOWER 118.4 349.0	GND CON 121.8 275.8	CLNC DEL 127.55 285.475	CPDLC
-------------------------------	---------------------------------------	-----------------------------	-------------------------------	-----------------------------------	-------



NE-3, 31 OCT 2024 to 28 NOV 2024

NE-3, 31 OCT 2024 to 28 NOV 2024

4 NM Holding Pattern 2500 ← 190° 010° →	BRINE	VGSI and RNAV glidepath not coincident (VGSI Angle 3.00/TCH 61).	2500 HULVI	ELEV 280	TDZE 265
GP 3.00° TCH 47	1800	WIPAG	1.1 NM to RWY 1R	BCN 483	
	2.6 NM	960	2.1 NM	TWR 435	
CATEGORY	A	B	C	D	E
LPV DA*		465/24	200	(200-½)	
LNAV/VNAV DA**		660/35	395	(400-¾)	
LNAV MDA***	660/24	395 (400-½)	660/35	395 (400-¾)	
C CIRCLING****	780-1	500 (500-1)	780-1½ 500 (500-1½)	840-2	560 (600-2)

CAMP SPRINGS, MARYLAND

38°49'N - 76°52'W

JOINT BASE ANDREWS (KADW)

Amdt 3 18MAY23

RNAV (GPS) RWY 1R