

LINCN TWO DEPARTURE (RNAV) (LINCN2.LINCN)

TOP ALTITUDE:
3000

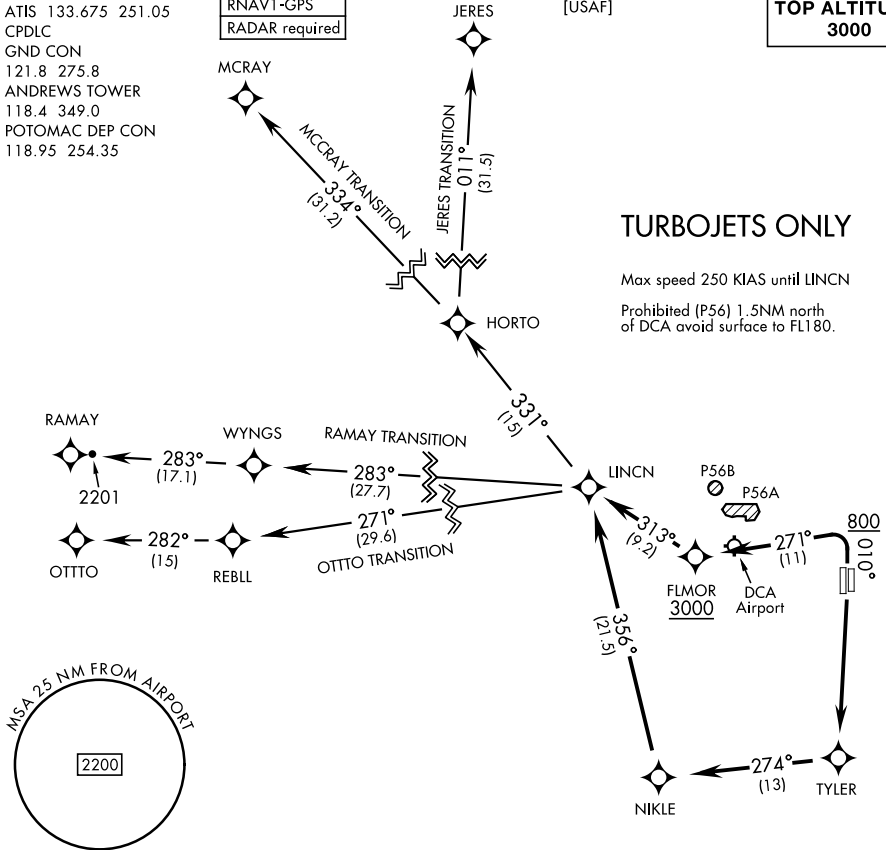
ATIS 133.675 251.05
CPDLC
GND CON
121.8 275.8
ANDREWS TOWER
118.4 349.0
POTOMAC DEP CON
118.95 254.35

RNAV1-GPS
RADAR required

[USAF]

TURBOJET'S ONLY

Max speed 250 KIAS until LINCN
Prohibited (P56) 1.5NM north
of DCA avoid surface to FL180.



NE-3, 31 OCT 2024 to 28 NOV 2024

NE-3, 31 OCT 2024 to 28 NOV 2024

DEPARTURE ROUTE DESCRIPTION

TAKEOFF RWY 01L/R: Climb heading 010° to 800, then climbing left turn to 3000 direct FLMOR. Then via depicted route to LINCN, thence...

TAKEOFF RWY 19L/R: Climb direct TYLER then via depicted route to LINCN, thence...

...on assigned transition. Maintain 3000, expect further clearance to filed alt within ten (10) minutes after departure.

JERES TRANSITION (LINCN2.JERES)

MCCRAY TRANSITION (LINCN2.MCCRAY)

OTTO TRANSITION (LINCN2.OTTO)

RAMAY TRANSITION (LINCN2.RAMAY)

LINCN TWO DEPARTURE (RNAV) (LINCN2.LINCN)