

CAMP SPRINGS, MARYLAND

# ILS or LOC RWY 1L

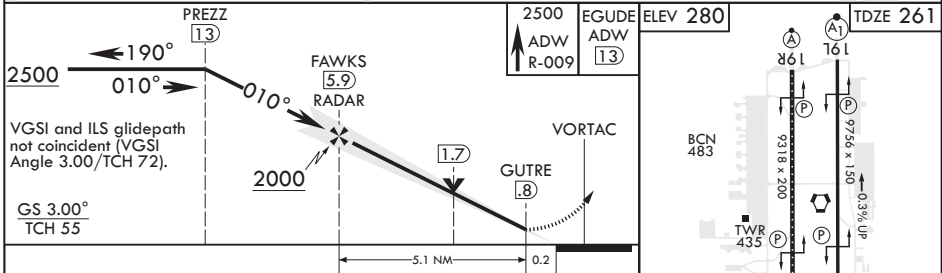
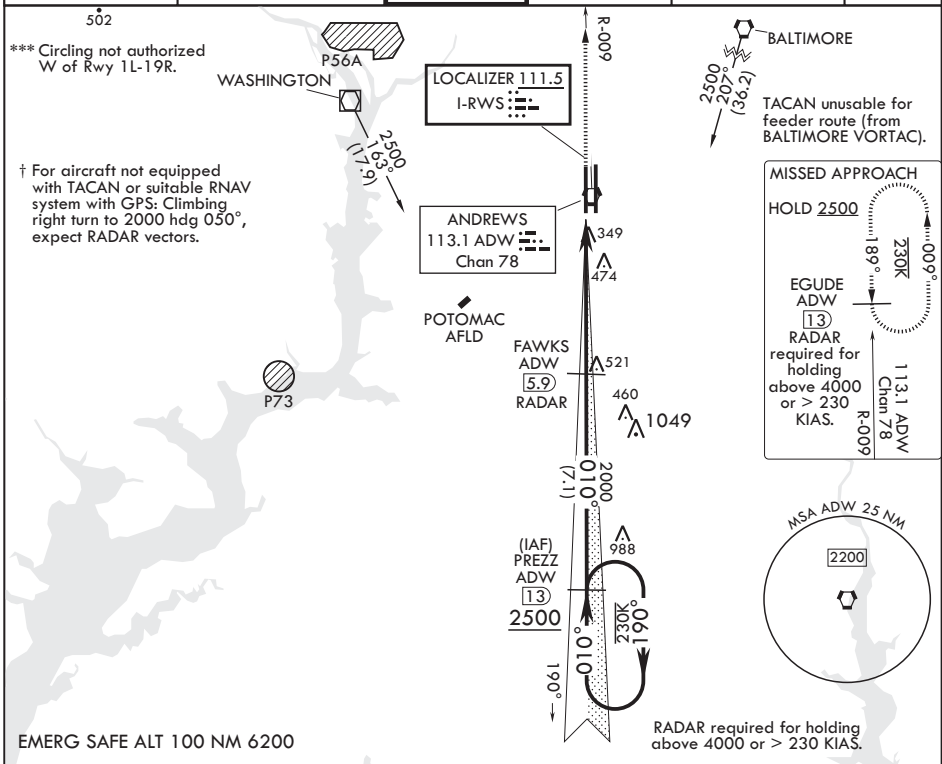
LOC I-RWS <b>111.5</b>	APCH CRS <b>010°</b>	Rwy Idg TDZE Arprt Elev	<b>9318</b> <b>261</b> <b>280</b>
---------------------------	-------------------------	-------------------------------	---

AL-561 (USAF)

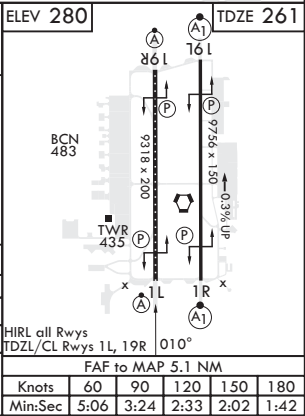
JOINT BASE ANDREWS (KADW)

RADAR or DME required.		ALSF-2	† MISSED APPROACH: Climbing to 2500, intercept ADW VORTAC R-009 to EGUDE and hold.
* When ALS inop increase RVR to 40, vis to 3/4 mile. When TDZL/CL inop, increase RVR to 24. ** When ALS inop, increase CAT AB RVR to 55, vis to 1 mile, CAT CDE RVR to 60, vis to 1 1/8 miles.			

ATIS <b>133.675 251.05</b>	POTOMAC APP CON <b>128.0 335.5</b>	TOWER <b>118.4 349.0</b>	GND CON <b>121.8 275.8</b>	CLNC DEL <b>127.55 285.475</b>	CPDLC
-------------------------------	---------------------------------------	-----------------------------	-------------------------------	-----------------------------------	-------



CATEGORY	A	B	C	D	E
S-ILS 1L*	461/18		200	(200-½)	
S-LOC 1L**	680/24	419 (400-½)	680/40	419	(400-¾)
☐ CIRCLING***	780-1	500 (500-1)	780-1½	500 (500-1½)	840-2 560 (600-2)



CAMP SPRINGS, MARYLAND

38°49'N - 76°52'W

JOINT BASE ANDREWS (KADW)

Amdt 7 06OCT22

# ILS or LOC RWY 1L

NE-3, 31 OCT 2024 to 28 NOV 2024

NE-3, 31 OCT 2024 to 28 NOV 2024

FAF to MAP 5.1 NM					
Knots	60	90	120	150	180
Min:Sec	5:06	3:24	2:33	2:02	1:42