

CAMP SPRINGS, MARYLAND

# ILS RWY 1L (CAT II & III)

JOINT BASE ANDREWS (KADW)

LOC I-RWS <b>111.5</b>	APCH CRS <b>010°</b>	Rwy ldg TDZE Arprt Elev <b>9318</b> <b>261</b> <b>280</b>
---------------------------	-------------------------	--

AL-561 [USAF]

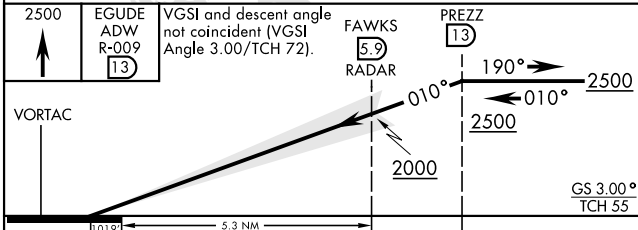
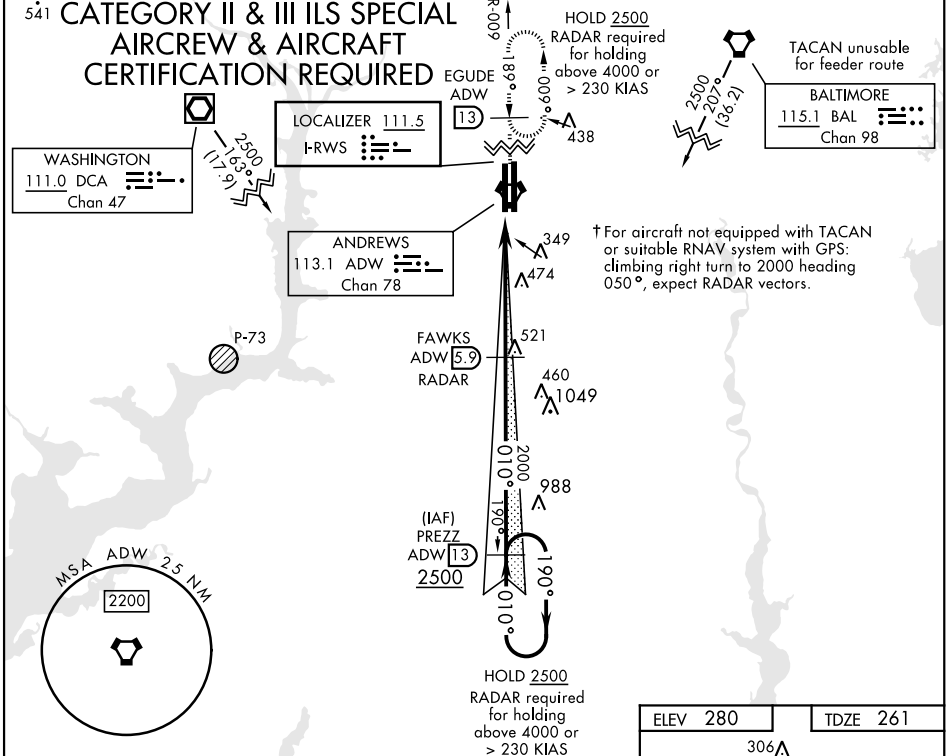
RADAR or DME required.



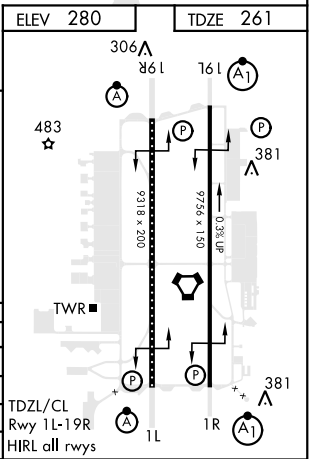
† MISSED APPROACH: Climbing to 2500, intercept ADW VORTAC R-009 to EGUDE and hold.

ATIS <b>133.675 251.05</b>	POTOMAC APP CON <b>128.0 335.5</b>	TOWER <b>118.4 349.0</b>	GND CON <b>121.8 275.8</b>	CLNC DEL <b>127.55 285.475</b>	CPDLC
-------------------------------	---------------------------------------	-----------------------------	-------------------------------	-----------------------------------	-------

## 541 CATEGORY II & III ILS SPECIAL AIRCREW & AIRCRAFT CERTIFICATION REQUIRED



CATEGORY	A	B	C	D	E
S-ILS 1L	CAT II		RA 108/12	100	DA 361
S-ILS 1L	CAT IIIa		RVR 07		
S-ILS 1L	CAT IIIb		RVR 06		
S-ILS 1L	CAT IIIc		NA		



CAMP SPRINGS, MARYLAND

38°49'N-76°52'W

JOINT BASE ANDREWS (KADW)

Orig 06OCT22

# ILS RWY 1L (CAT II & III)

NE-3, 31 OCT 2024 to 28 NOV 2024

NE-3, 31 OCT 2024 to 28 NOV 2024