

(TURPS2.TURPS) 24305

AL-560 (FAA)

BOCA RATON (BCT)
BOCA RATON, FLORIDA

TURPS TWO DEPARTURE (RNAV)

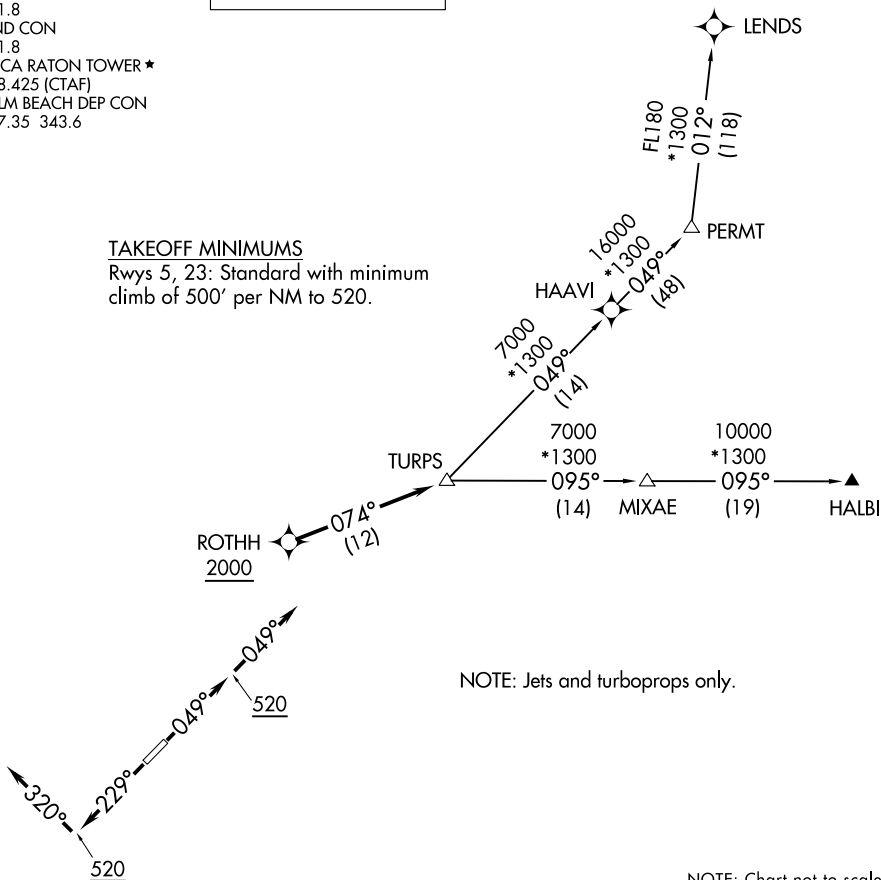
AWOS-3
121.125
CLINC DEL
121.8
GND CON
121.8
BOCA RATON TOWER ★
118.425 (CTAF)
PALM BEACH DEP CON
127.35 343.6

**TOP ALTITUDE:
2000**

RNAV-1 DME/DME/IRU or GPS.
RADAR required.

TAKEOFF MINIMUMS

Rwys 5, 23: Standard with minimum
climb of 500' per NM to 520.



NOTE: Jets and turboprops only.

NOTE: Chart not to scale.



DEPARTURE ROUTE DESCRIPTION

TAKEOFF RUNWAY 5: Climb on heading 049° to 520, then on heading 049°, or as assigned by ATC, for vectors to cross ROTHH at or above 2000, thence. . . .

TAKEOFF RUNWAY 23: Climb on heading 229° to 520, then on heading 320°, or as assigned by ATC, for vectors to cross ROTHH at or above 2000, thence. . . .

. . . .on track 074° to TURPS, maintain 2000, then on assigned transition, expect clearance to filed altitude within 10 minutes after departure.

HALBI TRANSITION (TURPS2.HALBI)

LEND'S TRANSITION (TURPS2.LEND'S)

PERMT TRANSITION (TURPS2.PERMT)

TURPS TWO DEPARTURE (RNAV)
(TURPS2.TURPS) 19MAY22

BOCA RATON, FLORIDA
BOCA RATON (BCT)

SE-3, 31 OCT 2024 to 28 NOV 2024

SE-3, 31 OCT 2024 to 28 NOV 2024