

APP CRS	Rwy Idg	<b>5898</b>
<b>229°</b>	TDZE	<b>13</b>
	Apt Elev	<b>13</b>

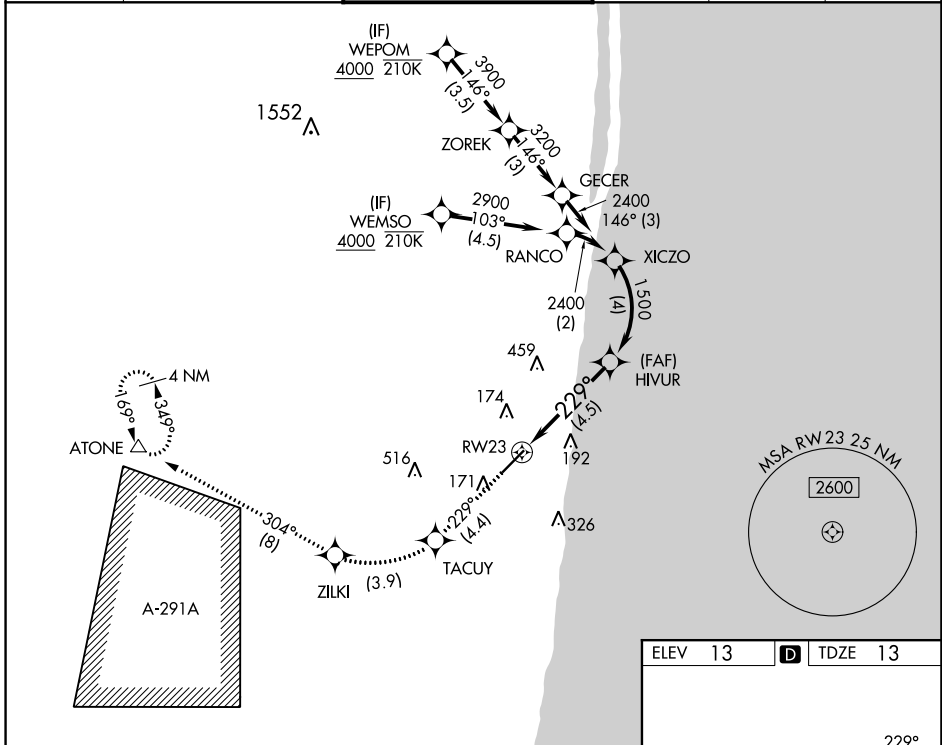
# RNAV (RNP) Z RWY 23

BOCA RATON (BCT)

RNP AR APCH. RF Required.  
 ▼ For uncompensated Baro-VNAV systems, procedure NA below -15°C or above 54°C. In minimum visibility conditions, bright lights on highway ¼ mile north of airport may be mistaken for runway lights.

MISSED APPROACH: Climb to 2100 on track 229° to TACUY, right turn to ZILKI and track 304° to ATONE and hold.

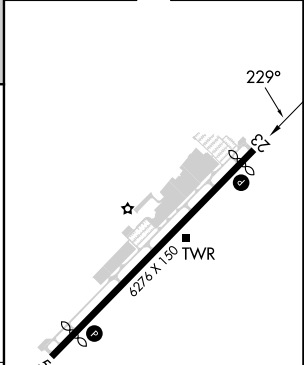
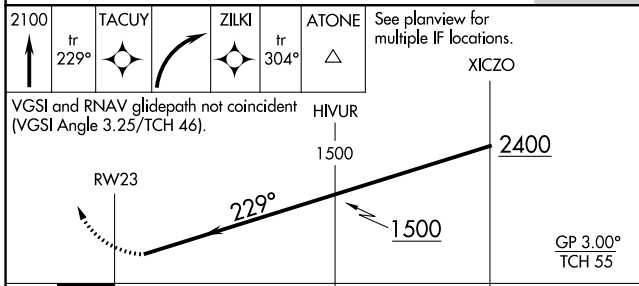
AWOS-3 <b>121.125</b>	PALM BEACH APP CON <b>127.35 343.6</b>	BOCA RATON TOWER ★ <b>118.425 (CTAF) 0</b>	GND CON <b>121.8</b>	CLNC DEL <b>121.8</b>	GCO <b>127.35</b>
--------------------------	---	---	-------------------------	--------------------------	----------------------



SE-3, 31 OCT 2024 to 28 NOV 2024

SE-3, 31 OCT 2024 to 28 NOV 2024

ELEV 13	<b>D</b> TDZE 13
---------	------------------



CATEGORY	A	B	C	D
RNP 0.30 DA	519-1 $\frac{3}{8}$		506 (600-1 $\frac{3}{8}$ )	
<b>AUTHORIZATION REQUIRED</b>				

MIRL Rwy 5-23 **0**  
 REIL Rws 5 and 23 **0**