

WAAS CH 82101 W05A	APP CRS 049°	Rwy Idg 5580 TDZE 12 Apt Elev 13
--	------------------------	---

RNAV (GPS) RWY 5

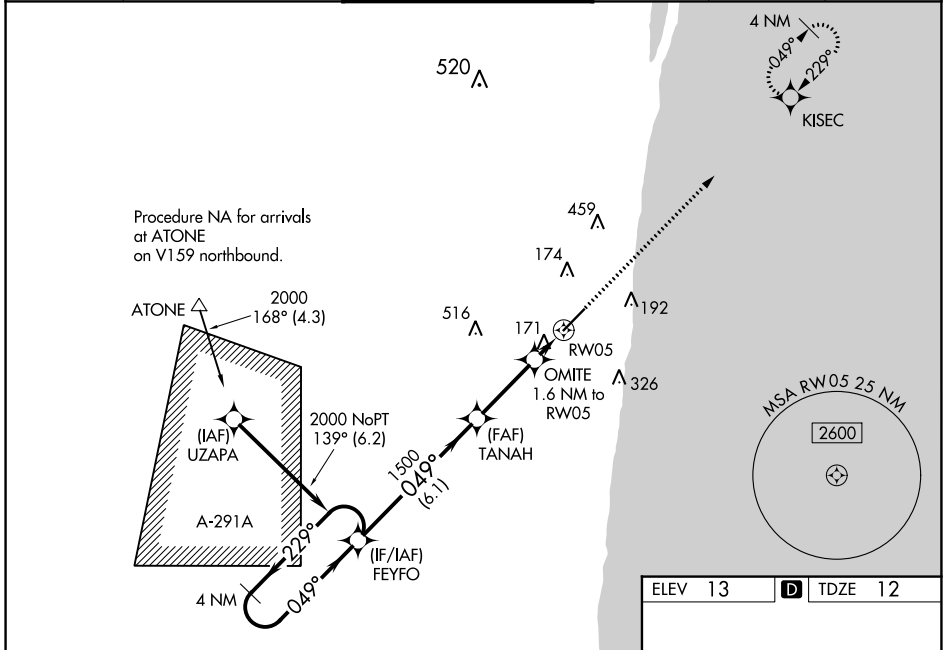
BOCA RATON (BCT)

RNP APCH-GPS.

▼ Baro-VNAV NA when using Palm Beach Intl altimeter setting. For uncompensated Baro-VNAV systems, LNAV/VNAV NA below -15°C or above 54°C. When local altimeter setting not received, use Palm Beach Intl altimeter setting: increase LPV DA to 326 feet; increase LNAV/VNAV DA to 501 feet; increase all MDAs 60 feet and visibility LNAV Cats C and D 1/4 SM and Circling Cats C and D 1/4 SM. In minimum visibility conditions bright lights on highway 1/4 mile north of airport may be mistaken for runway lights. Rwy 3 helicopter visibility reduction below 3/4 SM NA.

MISSED APPROACH: Climb to 2000 direct KISEC and hold.

AWOS-3 121.125	PALM BEACH APP CON 127.35 343.6	BOCA RATON TOWER ★ 118.425 (CTAF) 0	GND CON 121.8	CLNC DEL 121.8	GCO 127.35
--------------------------	---	---	-------------------------	--------------------------	----------------------

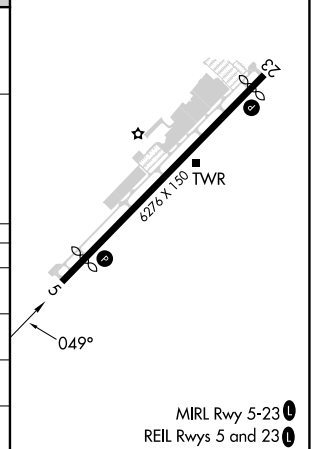


SE-3, 31 OCT 2024 to 28 NOV 2024

SE-3, 31 OCT 2024 to 28 NOV 2024

ELEV 13	D TDZE 12
---------	------------------

4 NM Holding Pattern		VGSI and RNAV glidepath not coincident (VGSI Angle 3.25/TCH 46).		2000	KISEC
2000 ← 229° / → 049°		FEYFO		↑	✧
GP 3.00° / TCH 40		TANAH 1500		OMITE 1.6 NM to RWY 5	
		1500		RWY 5	
		6.1 NM		3 NM	
		560		1.6 NM	
CATEGORY	A	B	C	D	
LPV DA		283-7/8	271 (300-7/8)		
LNAV/VNAV DA		458-13/8	446 (500-13/8)		
LNAV MDA	440-1	428 (500-1)	440-1 1/4	428 (500-1 1/4)	
C CIRCLING	680-1	667 (700-1)	680-1 1/4 667 (700-1 1/4)	880-2 3/4 867 (900-2 3/4)	



MIRL Rwy 5-23 0
REIL Rwys 5 and 23 0