

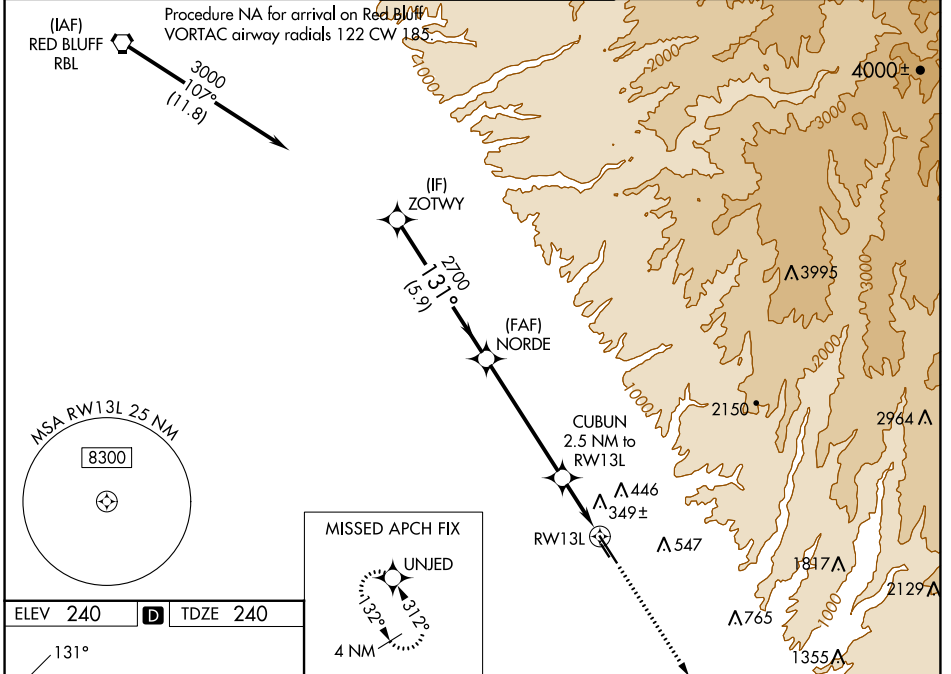
WAAS CH 65912 W13A	APP CRS 131°	Rwy Idg 6724 TDZE 240 Apt Elev 240
---------------------------------	------------------------	---

RNAV (GPS) RWY 13L

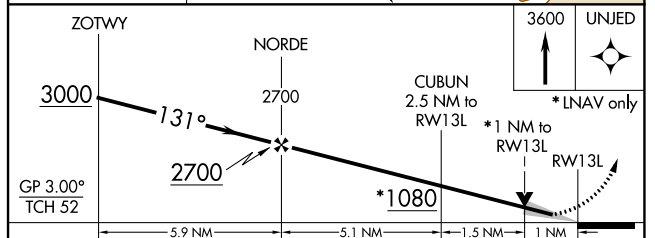
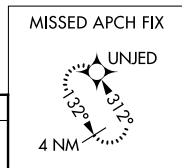
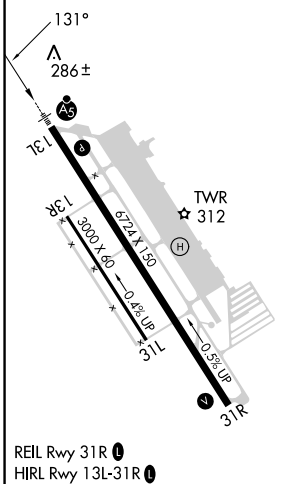
CHICO RGNL (CIC)

RNP APCH.	MALSR	MISSED APPROACH: Climb to 3600 direct UNJED and hold, continue climb-in-hold to 3600.
<p>⚠ Circling NA east of Rwy 13L-31R. For uncompensated Baro-VNAV systems, LNAV/VNAV NA below -15°C or above 54°C. For inop ALS, increase LNAV/VNAV all Cats visibility to 7/8 SM, and increase LNAV Cats C/D visibility to 1 SM.</p>		

ATIS 119.675	OAKLAND CENTER 132.2 350.3	CHICO TOWER* 121.0 (CTAF) 0 239.3	GND CON 121.9	UNICOM 122.95
------------------------	--------------------------------------	---	-------------------------	-------------------------



ELEV 240	D	TDZE 240
-----------------	----------	-----------------



CATEGORY	A	B	C	D
LPV DA		440-1/2	200 (200-1/2)	
LNAV/VNAV DA		530-1/2	290 (300-1/2)	
LNAV MDA	600-1/2	360 (400-1/2)	600-5/8	360 (400-5/8)
C CIRCLING	640-1 400 (400-1)	700-1 460 (500-1)	700-1 1/2 460 (500-1 1/2)	800-2 560 (600-2)

SW-2, 03 OCT 2024 to 31 OCT 2024

SW-2, 03 OCT 2024 to 31 OCT 2024