

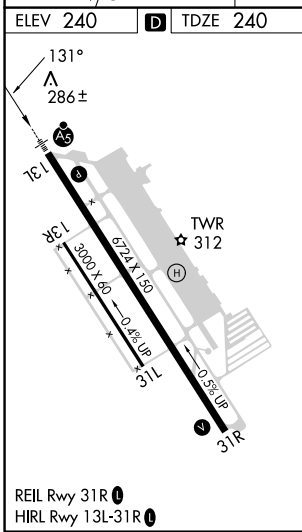
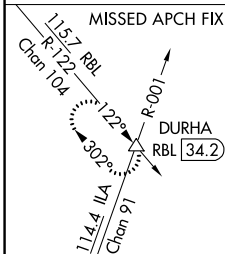
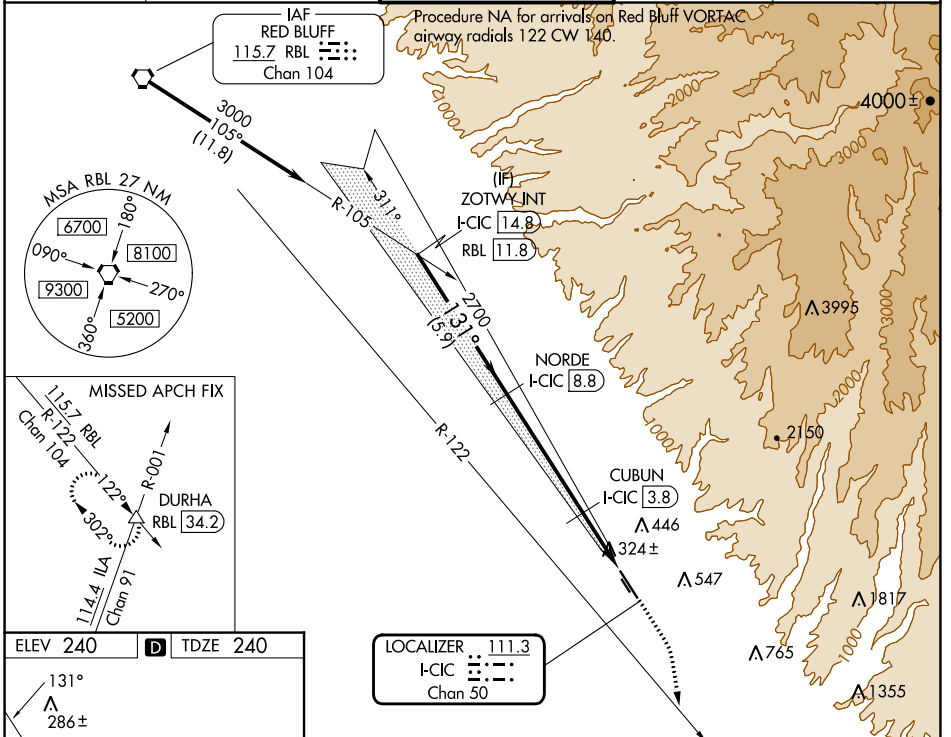
LOC/DME I-CIC 111.3 Chan 50	APP CRS 131°	Rwy Ldg TDZE 6724 240	Apt Elev 240
--	------------------------	---	------------------------

ILS or LOC RWY 13L

CHICO RGNL (CIC)

DME required.		MALSR	MISSED APPROACH: Climb to 1000 then climbing right turn to 6000 on heading 155° and RBL R-122 to DURHA INT/ RBL 34.2 DME and hold, continue climb-in-hold to 6000.	
Circling NA east of Rwy 13L/31R.				

ATIS 119.675	OAKLAND CENTER 132.2 350.3	CHICO TOWER ★ 121.0 (CTAF) 239.3	GND CON 121.9	UNICOM 122.95
------------------------	--------------------------------------	--	-------------------------	-------------------------



ZOTWY INT I-CIC 14.8	NORDE I-CIC 8.8	CUBUN I-CIC 3.8	DURHA RBL 34.2	
3000	2700	1000	6000	
GS 3.00° TCH 52	131°	hdg R-155	RBL R-122	
5.9 NM	5.1 NM	1.6 NM	0.9 NM	
CATEGORY	A	B	C	D
S-ILS 13L	440-½		200 (200-½)	
S-LOC 13L	580-½		340 (400-½)	
CIRCLING	640-1 400 (400-1)	700-1 460 (500-1)	700-1½ 460 (500-1½)	800-2 560 (600-2)

SW-2, 03 OCT 2024 to 31 OCT 2024

SW-2, 03 OCT 2024 to 31 OCT 2024