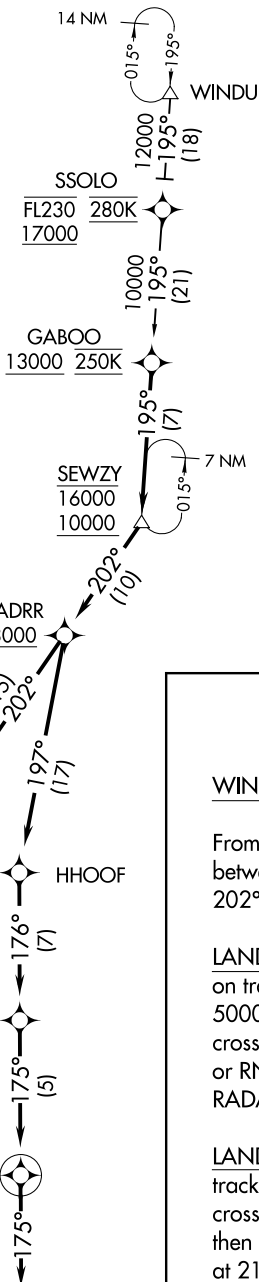


(GABOO.SEWZY6) 21112
SEWZY SIX ARRIVAL (RNAV)

AL-556 (FAA)

AUSTIN-BERGSTROM INTL (AUS)
 AUSTIN, TEXAS

AUSTIN APP CON
 127.225 317.65
 D-ATIS
 124.4



- NOTE: RADAR required.
- NOTE: RNAV 1.
- NOTE: DME/DME/IRU or GPS required.
- NOTE: Turbojet and turboprop aircraft only.
- NOTE: Expect rwy assignment from AUSTIN TRACON upon initial contact.

ARRIVAL ROUTE DESCRIPTION

WINDU TRANSITION (WINDU.SEWZY6)

From GABOO on track 195° to cross SEWZY between 10000 and 16000, then on track 202° to cross VADRR at or above 8000.

LANDING RUNWAYS 18L/R: From VADRR on track 202° to cross MGTEC at or above 5000 and at 220K, then on track 221° to cross JEDYE at 4000 and at 210K. Expect ILS or RNAV (RNP) RWY 18L/R approach or RADAR vectors to final approach course.

LANDING RUNWAYS 36L/R: From VADRR on track 197° to HHOOF, then on track 176° to cross MMARE at or above 6000 and at 220K, then on track 175° to cross SMRFF at 5000 and at 210K, then on track 175°. Expect RADAR vectors to final approach course.

NOTE: Chart not to scale.

SEWZY SIX ARRIVAL (RNAV)
 (GABOO.SEWZY6) 22APR21

AUSTIN, TEXAS
 AUSTIN-BERGSTROM INTL (AUS)

SC-3, 08 AUG 2024 to 05 SEP 2024

SC-3, 08 AUG 2024 to 05 SEP 2024