

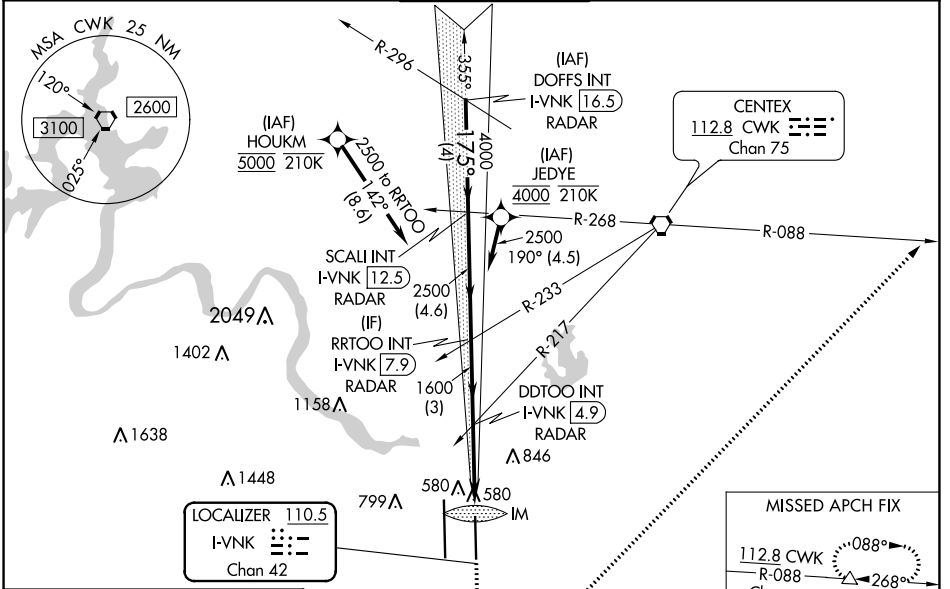
LOC/DME I-VNK 110.5 Chan 42	APP CRS 175°	Rwy Idg TDZE Apt Elev 9000 492 542
--	------------------------	--

ILS RWY 18L (CAT II & III)

AUSTIN-BERGSTROM INTL (AUS)

RNP APCH-GPS. From HOUKM or JEDYE.		ALSF-2 	MISSED APPROACH: Climb to 1000, then climbing left turn to 3000 on heading 040° and CWK VORTAC R-088 to HOOKK/CWK 17 DME and hold.
RADAR required for procedure entry from DOFFS. DME required.			
Simultaneous approach authorized.			

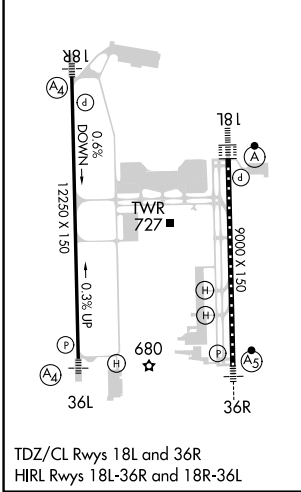
D-ATIS 124.4	AUSTIN APP CON 127.225 317.65 (EAST) 120.875 270.25 (SOUTH) 119.0 370.85 (WEST)	AUSTIN TOWER 121.0 281.5	GND CON 121.9 348.6	CLNC DEL 125.5 263.0	CPDLC
------------------------	---	------------------------------------	-------------------------------	--------------------------------	-------



SC-3, 08 AUG 2024 to 05 SEP 2024

SC-3, 08 AUG 2024 to 05 SEP 2024

ELEV 542	D TDZE 492
----------	-------------------



VGS and ILS glidepath not coincident (VGS Angle 3.00/TCH 74).				1000	3000	HOOKK
DOFFS INT I-VNK [16.5] RADAR	SCALI INT I-VNK [12.5] RADAR	RRTOO I-VNK [7.9] RADAR	DDTOO I-VNK [4.9] RADAR	hdg 040°	CWK R-088	△
5000	4000	2500	1600			
GS 3.00° TCH 61	4 NM	4.6 NM	3 NM	3.3 NM	1201'	
CATEGORY	A	B	C	D		
S-ILS 18L	CAT II RA 105/12 100 DA 592					
S-ILS 18L	CAT III RVR 06					

CATEGORY II & III ILS - SPECIAL AIRCREW & AIRCRAFT CERTIFICATION REQUIRED