

# HARYS FOUR DEPARTURE (RNAV)

AL-552 (FAA)

VAN NUYS (VNY)  
VAN NUYS, CALIFORNIA

SW-3, 08 AUG 2024 to 05 SEP 2024

**TOP ALTITUDE:  
FL230**

NOTE: DME/DME/IRU or GPS required.  
NOTE: RADAR required.

NOTE: RNAV 1.

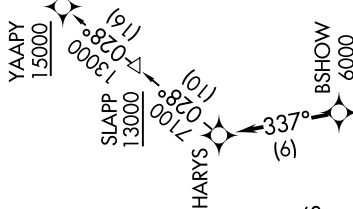
NOTE: Turbojet and high performance turboprop aircraft only.

NOTE: MISEN transition restricted to aircraft landing LAS terminal area.

NOTE: HALLO transition ATC only.

NOTE: Cross DER/VNY VOR/DME 1.5 DME south at or below 1750.

ATIS 127.55  
CLNC DEL 126.6 239.0  
CPDIC  
GND CON  
121.7  
VAN NUYS TOWER\* 119.3 239.0  
SOCAL DEP CON 124.6 298.85



**TAKEOFF MINIMUMS**  
Rwys 16L, 34L/R: NA - ATC.  
Rwy 16R: Standard with minimum climb of 450' per NM to 2600.

## DEPARTURE ROUTE DESCRIPTION

**TAKEOFF RUNWAY 16R:** Climb on heading 164° to 1303, then direct PPRRY, then on heading 110° or as assigned by ATC, then on vectors to cross BSHOW at or above 6000, then on track 337° to HARYS, thence . . . .

. . . . on (transition) maintain FL230. Expect filed altitude 10 minutes after departure.

BLYTHE TRANSITION (HARYS4.BLH)

HALLO TRANSITION (HARYS4.HALLO)

HECTOR TRANSITION (HARYS4.HEC)

LAS VEGAS TRANSITION (HARYS4.LAS)

MISEN TRANSITION (HARYS4.MISEN)

NOTE: Chart not to scale.

# HARYS FOUR DEPARTURE (RNAV)

(HARYS4.HARYS) 10SEP20

VAN NUYS, CALIFORNIA  
VAN NUYS (VNY)

SW-3, 08 AUG 2024 to 05 SEP 2024