

WAAS CH 65927 W33A	APP CRS 339°	Rwy Idg TDZE Apt Elev	5659 4782 4875
--	------------------------	-----------------------------	---

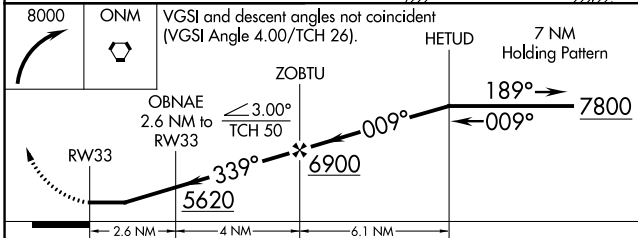
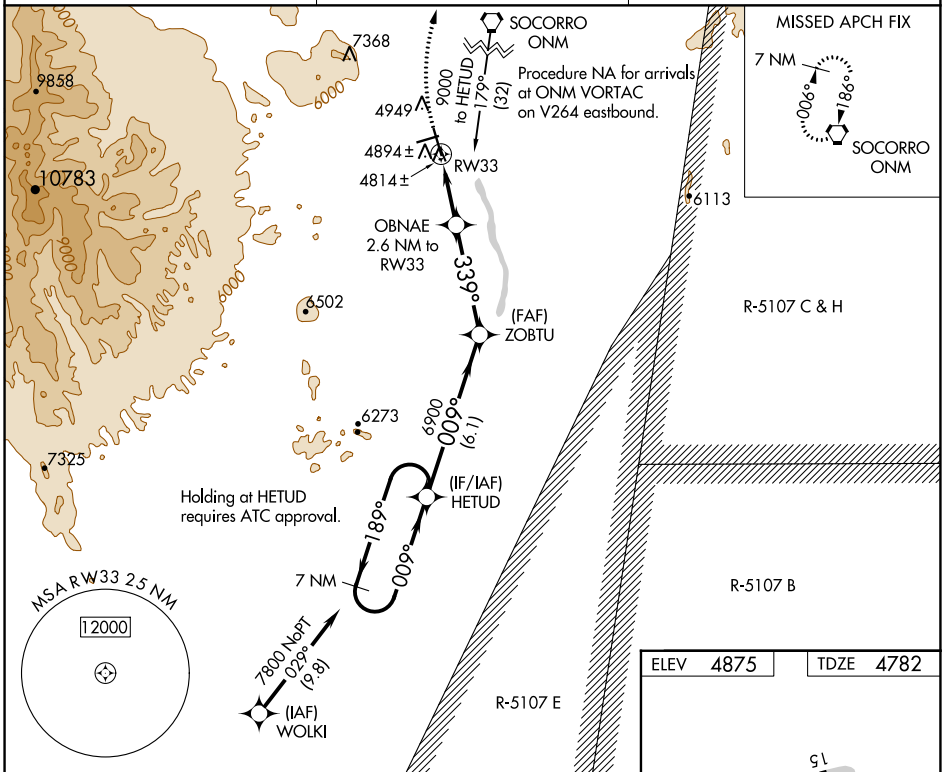
RNAV (GPS) RWY 33

SOCORRO MUNI (ONM)

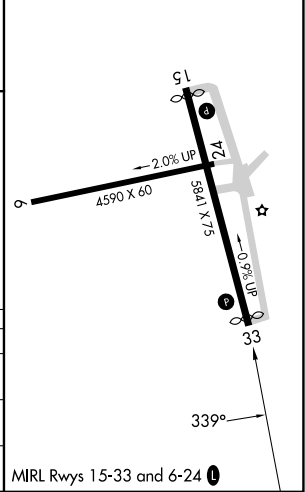
▼ When VGSI inop, Circling Rwy 15 NA at night. When VGSI inop, Straight-in/Circling Rwy 33 procedure NA at night. DME/DME RNP-0.3 NA. Visibility reduction by helicopters NA. Circling Rwy NA west of Rwy 15-33. When local altimeter setting not received, procedure NA.

MISSED APPROACH: Climbing right turn to 8000 direct ONM VORTAC and hold.

AWOS-3 118.325	ALBUQUERQUE CENTER 124.325 288.25	UNICOM 122.8 (CTAF) 0
--------------------------	---	---------------------------------



ELEV 4875	TDZE 4782
------------------	------------------



CATEGORY	A	B	C	D
LP MDA	5080-1 298 (300-1)			NA
LNAV MDA	5160-1	378 (300-1)	5160-1 $\frac{1}{8}$ 378 (300-1 $\frac{1}{8}$)	NA
CIRCLING	5320-1 445 (500-1)	5340-1 465 (500-1)	5340-1 $\frac{1}{2}$ 465 (500-1 $\frac{1}{2}$)	NA

MIRL Rwy 15-33 and 6-24 0

SW-1, 31 OCT 2024 to 28 NOV 2024

SW-1, 31 OCT 2024 to 28 NOV 2024