

(TAFOY3.TAFOY) 23334

# TAFOY THREE DEPARTURE

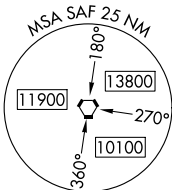
AL-548 (FAA)

SANTA FE RGNL (SAF)

SANTA FE, NEW MEXICO

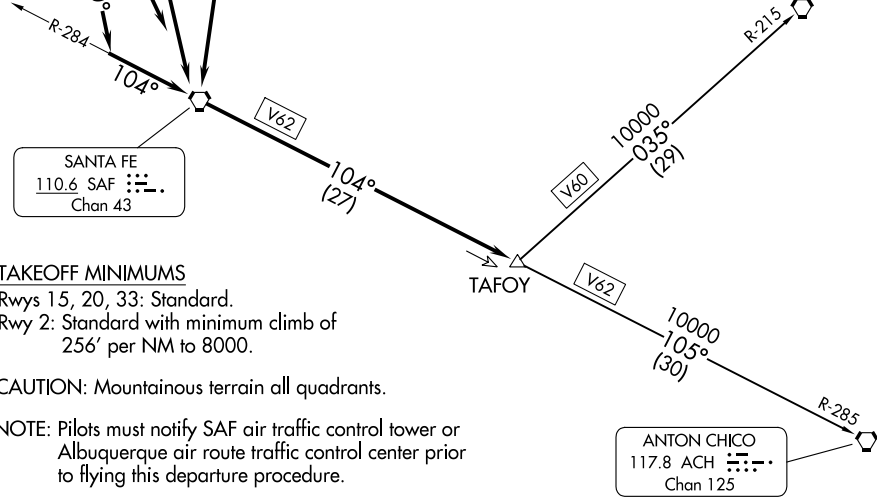
**TOP ALTITUDE:  
ASSIGNED BY ATC**

ALBUQUERQUE CENTER  
132.8 346.35  
ATIS  
128.55  
GND CON  
121.7  
SANTA FE TOWER \*  
119.5 239.3



FORT UNION  
117.3 FTI  
Chan 120

SANTA FE  
110.6 SAF  
Chan 43



### TAKEOFF MINIMUMS

Rwys 15, 20, 33: Standard.  
Rwy 2: Standard with minimum climb of 256' per NM to 8000.

CAUTION: Mountainous terrain all quadrants.

NOTE: Pilots must notify SAF air traffic control tower or Albuquerque air route traffic control center prior to flying this departure procedure.

NOTE: Chart not to scale.

### DEPARTURE ROUTE DESCRIPTION

TAKEOFF RUNWAY 2: Climbing left turn direct SAF VORTAC, then on SAF VORTAC R-104 to TAFOY, thence. . . .

TAKEOFF RUNWAY 15: Climb on heading 159° direct SAF VORTAC, then on SAF VORTAC R-104 to TAFOY, thence. . . .

TAKEOFF RUNWAY 20: Climbing left turn on heading 160° to intercept SAF VORTAC R-284 to SAF VORTAC, then on SAF VORTAC R-104 to TAFOY, thence. . . .

TAKEOFF RUNWAY 33: Climbing right turn direct SAF VORTAC, then on SAF VORTAC R-104 to TAFOY, thence. . . .

. . . . on assigned transition. Maintain ATC assigned altitude. Expect further clearance to filed altitude ten minutes after departure.

ANTON CHICO TRANSITION (TAFOY3.ACH): From over TAFOY on ACH R-285 to ACH VORTAC.

FORT UNION TRANSITION (TAFOY3.FTI): From over TAFOY on FTI R-215 to FTI VORTAC.

# TAFOY THREE DEPARTURE

(TAFOY3.TAFOY) 15JUN23

SANTA FE, NEW MEXICO  
SANTA FE RGNL (SAF)

SW-1, 05 SEP 2024 to 03 OCT 2024

SW-1, 05 SEP 2024 to 03 OCT 2024