

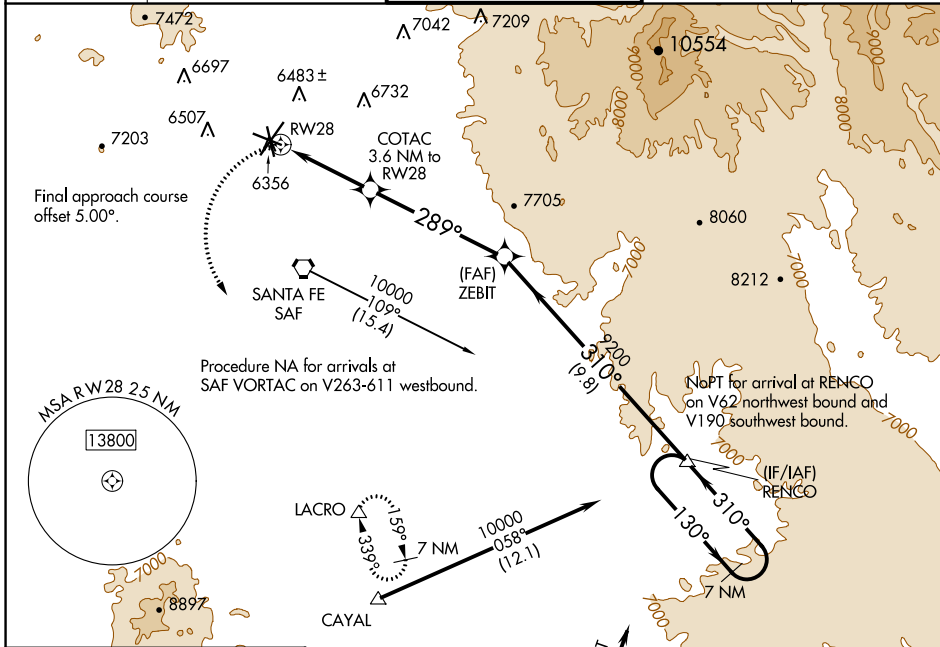
APP CRS	Rwy Idg	6301
289°	TDZE	6307
	Apt Elev	6349

RNAV (GPS) RWY 28

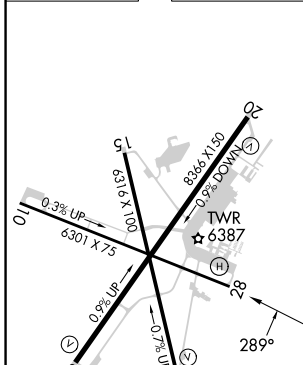
SANTA FE MUNI (SAF)

▽	DME/DME RNP-0.3 NA.	MISSED APPROACH: Climbing left turn to 9200 direct LACRO and hold.
----------	---------------------	--

ATIS 128.55	ALBUQUERQUE CENTER 132.8 346.35	SANTA FE TOWER ★ 119.5 (CTAF) 239.3	GND CON 121.7	UNICOM 122.95
-----------------------	---	---	-------------------------	-------------------------

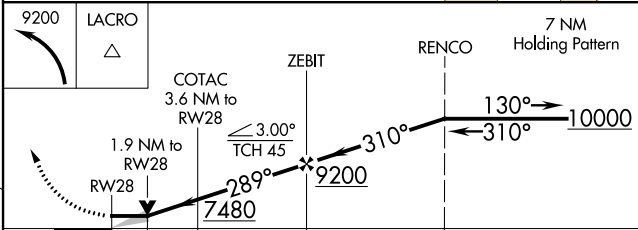


ELEV 6349	D	TDZE 6307
-----------	----------	-----------



REIL Rws 10, 15, 20 and 33
MIRL Rws 2-20 and 15-33

9200	LACRO	7 NM Holding Pattern
COTAC 3.6 NM to RW28	ZEBIT	RENCO
1.9 NM to RW28	7480	9200
1.7 NM	5.4 NM	9.8 NM



CATEGORY	A	B	C	D
LNAV MDA	6960-1	653 (700-1)	6960-1½	653 (700-1½)
C CIRCLING	6960-1	611 (700-1)	7340-3 991 (1000-3)	7660-3 1311 (1400-3)

SW-1, 26 JAN 2023 to 23 FEB 2023

SW-1, 26 JAN 2023 to 23 FEB 2023