

# TACAN Y RWY 31

TACAN OFF Chan <b>54</b>	APCH CRS <b>316°</b>	Rwy ldg <b>10,620</b> TDZE <b>982</b> Arprt Elev <b>1049</b>
-----------------------------	-------------------------	--

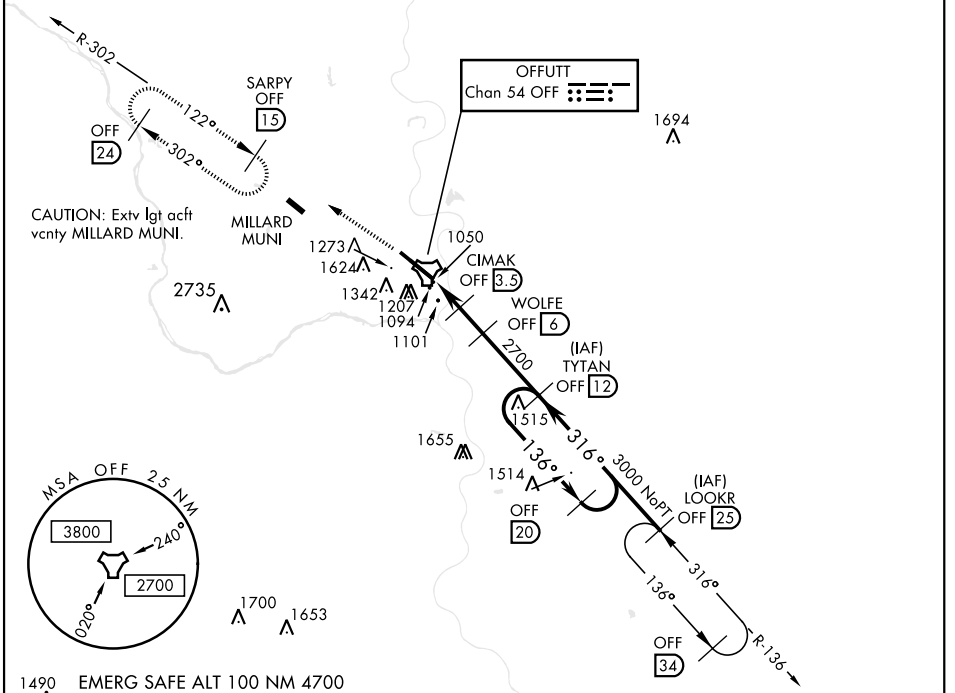
AL-544 [USAF]

OFFUTT AFB (KOFF)

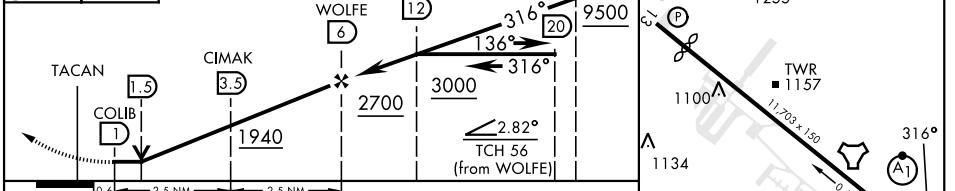
<p>▼ * When ALS inop, increase RVR to 55, vis to 1 mile. ** Circling not authorized N of Rwy 13-31.</p>	<p>ALSF-1 (A1)</p>	<p>MISSED APPROACH: Climb to 3000 via OFF TACAN R-302 to SARPY and hold.</p>
---	------------------------	--

<p>ATIS <b>126.025 273.5</b></p>	<p>OMAHA APP CON <b>120.1 354.05 (W)</b> <b>124.5 263.0 (E)</b></p>	<p>TOWER <b>123.7 279.625</b></p>	<p>GND CON <b>121.7 289.4</b></p>
--------------------------------------	---	---------------------------------------	---------------------------------------

CAUTION: When circling to Rwy 13 at night, operational VGSI required, remain on or above VGSI glidepath until threshold.



<p>3000 OFF R-302</p> <p>SARPY OFF 15</p>	<p>LOOKR 25</p>	<p>ELEV 1049</p> <p>TDZE 982</p> <p>Rwy 13 ldg 10,704' Rwy 31 ldg 10,620'</p>
---	-----------------	---



CATEGORY	A	B	C	D	E
S-31*	1360/24	378 (400-½)	1360/40	378 (400-¾)	
CIRCLING**	1500-1 451 (500-1)	1580-1 531 (600-1)	1660-1¾ 611 (700-1¾)	1940-3	891 (900-3)

HIRL Rwy 13-31  
Rwy 13-31 ALS nstd

# TACAN Y RWY 31

NC-2, 18 MAY 2023 to 15 JUN 2023

NC-2, 18 MAY 2023 to 15 JUN 2023