

OMAHA, NEBRASKA

# TACAN Y RWY 13

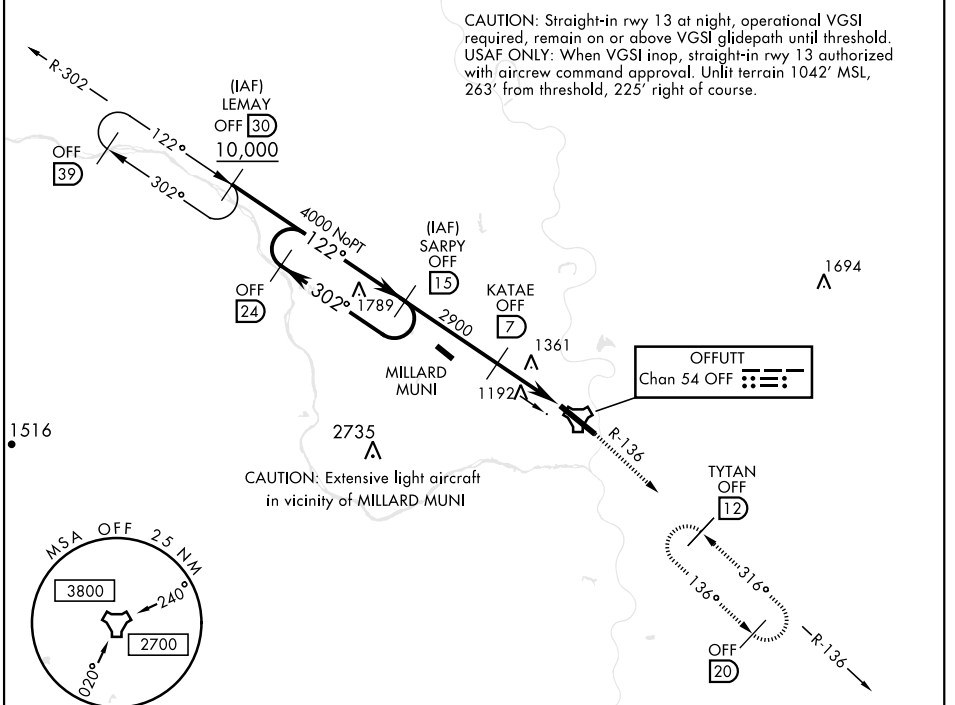
TACAN OFF Chan <b>54</b>	APCH CRS <b>122°</b>	Rwy Ldg <b>10,704</b> TDZE <b>1038</b> Arprt Elev <b>1049</b>	AL-544 [USAF]	OFFUTT AFB (KOFF)
-----------------------------	-------------------------	---	---------------	-------------------

▼ \* When ALS inop, increase CAT AB RVR to 55, CAT CDE vis to 1 3/4 miles.  
 \*\* Circling not authorized N of Rwy 13-31.

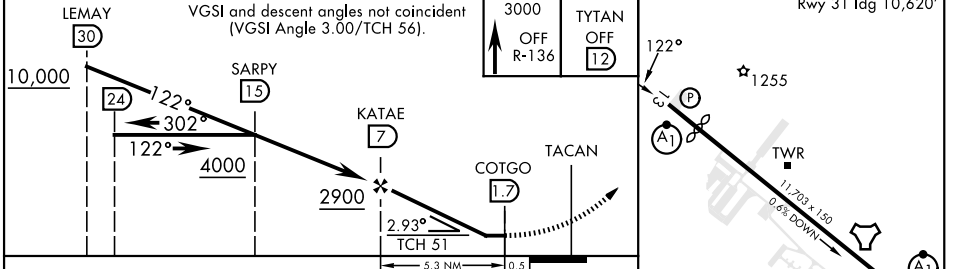
ALS-F1 (A1)

MISSED APPROACH: Climb to 3000 via OFF TACAN R-136 to TYTAN and hold.

ATIS <b>126.025 273.5</b>	OMAHA APP CON <b>120.1 354.05 (W)</b> <b>124.5 263.0 (E)</b>	TOWER <b>123.7 279.625</b>	GND CON <b>121.7 289.4</b>
------------------------------	--	-------------------------------	-------------------------------



EMERG SAFE ALT 100 NM 4700	ELEV 1049	TDZE 1038
----------------------------	-----------	-----------



CATEGORY	A	B	C	D	E
S-13 *	1620/50	582 (600-1)	1620-1 1/4	582	(600-1 1/4)
<b>C</b> CIRCLING **	1620-1	571 (600-1)	1660-1 3/4 611 (700-1 1/2)	1940-3	891 (900-3)

HIRL Rwy 13-31  
Rwy 13-31 ALS nstd

OMAHA, NEBRASKA 41°07'N-95°54'W OFFUTT AFB (KOFF)

# TACAN Y RWY 13

NC-2, 18 MAY 2023 to 15 JUN 2023

NC-2, 18 MAY 2023 to 15 JUN 2023

Orig 06OCT22