

OMAHA, NEBRASKA

RNAV (GPS) RWY 13

WAAS CH 91358 W13A	APCH CRS 127°	Rwy ldg TDZE 10,704 1038	Arprt Elev 1049
--------------------------	------------------	--------------------------------	--------------------

AL-544 (USAF)

OFFUTT AFB (KOFF)

RNP APCH

* When ALS inop, increase vis to 1 1/4 miles.
 ** When ALS inop, increase CAT AB RVR to 55, vis to 1 mile; CAT CDE vis to 1 5/8 miles.

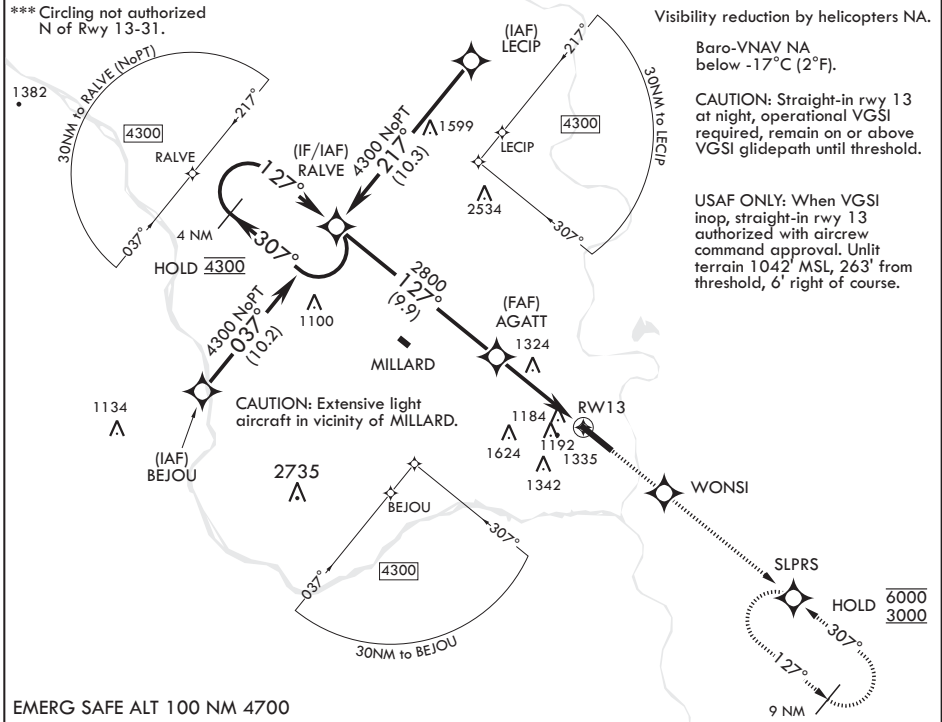
ALSF-1



MISSED APPROACH: Climb to 3,000 direct WONSJ, track 127° to SLPRS and hold.

ATIS 126.025 273.5	OMAHA APP CON/DEP CON 120.1 354.05 W 124.5 263.0 E	TOWER 123.7 279.625	GND CON 121.7 289.4
-----------------------	--	------------------------	------------------------

*** Circling not authorized N of Rwy 13-31.



NC-2, 18 MAY 2023 to 15 JUN 2023

NC-2, 18 MAY 2023 to 15 JUN 2023

EMERG SAFE ALT 100 NM 4700

4 NM Holding Pattern	3000	WONSJ	tr 127°	SLPRS	ELEV 1049	TDZE 1038
4300 ← 307°	↑	✧	⊙	⊙		Rwy 13 ldg 10,704' Rwy 31 ldg 10,620'
4300 → 127°	VGSJ and RNAV glidepath not coincident (VGSJ Angle 3.00/TCH 57).					
GP 3.00° TCH 51	AGATT	RW13	5.4 NM	BCN 1255	TWR	11,703 x 150 0.6% DOWN
CATEGORY	A	B	C	D	E	
LPV DA		1288/50	250		(300-1)	
LNAV/VNAV DA*		1468/50	430		(500-1)	
LNAV MDA**	1580/50	542 (600-1)	1580/60	542	(600-1½)	
CIRCLING***	1580-1	531 (600-1)	1660-1¾ 611 (700-1¾)	1940-3	891 (900-3)	

Rwy 13-31 ALS nstd HIRL all Rwys

OMAHA, NEBRASKA

41°07'N - 95°55'W

OFFUTT AFB (KOFF)

Orig 06OCT22

RNAV (GPS) RWY 13