

OMAHA, NEBRASKA

# ILS or LOC Y RWY 31

LOC I-OFF <b>109.5</b>	APCH CRS <b>307°</b>	Rwy Ldg <b>10,620</b> TDZE <b>982</b> Arprt Elev <b>1049</b>	AL-544 [USAF]	OFFUTT AFB (KOFF)
---------------------------	-------------------------	--------------------------------------------------------------------	---------------	-------------------

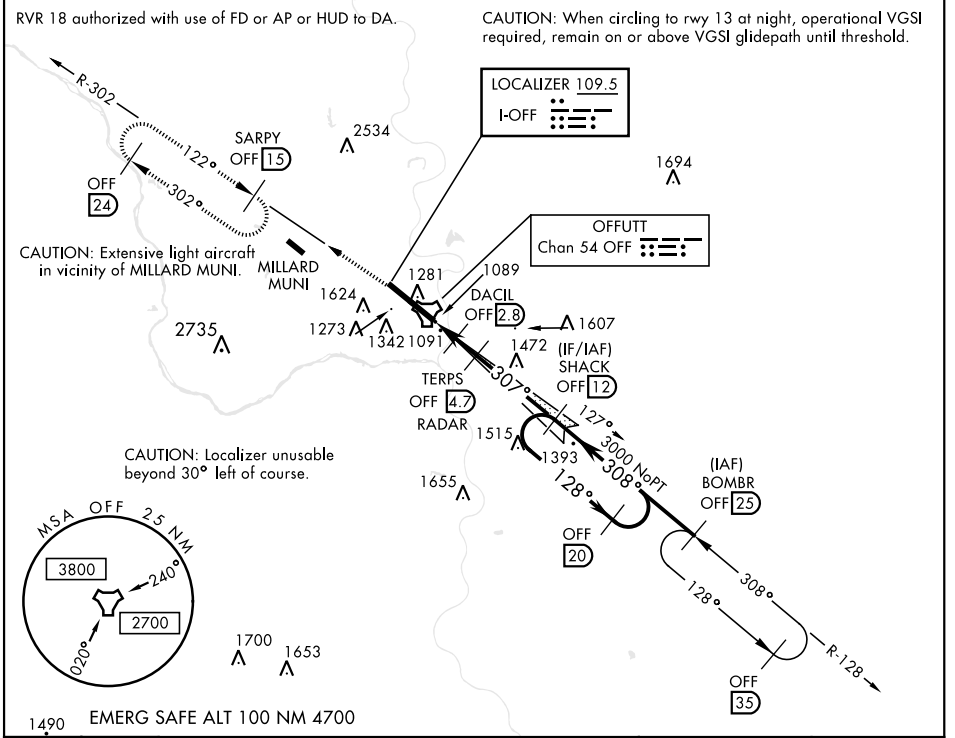
RADAR or DME required.

ALSF-1

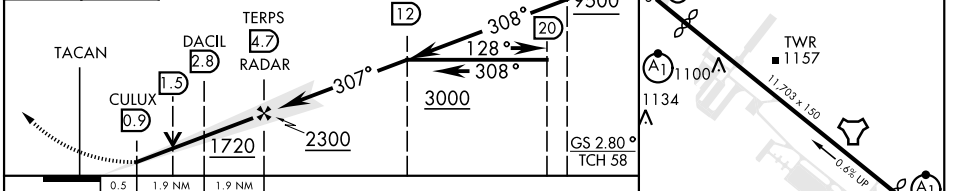
MISSED APPROACH: Climb to 3000 via OFF TACAN R-302 to SARPY and hold.

\* When ALS inop, increase RVR to 40 and vis to 3/4 mile.  
 \*\* When ALS inop, increase RVR to 55 and vis to 1 mile.  
 \*\*\* Circling not authorized N of Rwy 13-31.

ATIS <b>126.025 273.5</b>	OMAHA APP CON <b>120.1 354.05 (W)</b> <b>124.5 263.0 (E)</b>	TOWER <b>123.7 279.625</b>	GND CON <b>121.7 289.4</b>
------------------------------	--------------------------------------------------------------------	-------------------------------	-------------------------------



3000 OFF R-302	SARPY OFF 15	ELEV 1049	TDZE 982
----------------	--------------	-----------	----------



CATEGORY	A	B	C	D	E
S-ILS 31 *		1182/24	200	(200-1/2)	
S-LOC 31 **	1360/24	378 (400-1/2)	1360/35	378	(400-3/4)
CIRCLING ***	1500-1 451 (500-1)	1580-1 531 (600-1)	1660-1 3/4 611 (700-1 3/4)	1940-3	891 (900-3)

FAF to MAP 3.8 NM

Knots	60	90	120	150	180
Min:Sec	3:48	2:32	1:54	1:31	1:16

OMAHA, NEBRASKA 41°07'N-95°54'W OFFUTT AFB (KOFF)

Orig 06OCT22

# ILS or LOC Y RWY 31

NC-2, 18 MAY 2023 to 15 JUN 2023

NC-2, 18 MAY 2023 to 15 JUN 2023