

OMAHA, NEBRASKA

# ILS or LOC RWY 13

LOC I-ATB <b>111.7</b>	APCH CRS <b>127°</b>	Rwy ldg <b>10,695</b> TDZE <b>1048</b> Arprt Elev <b>1048</b>
---------------------------	-------------------------	---

[USAF]

OFFUTT AFB (KOFF)

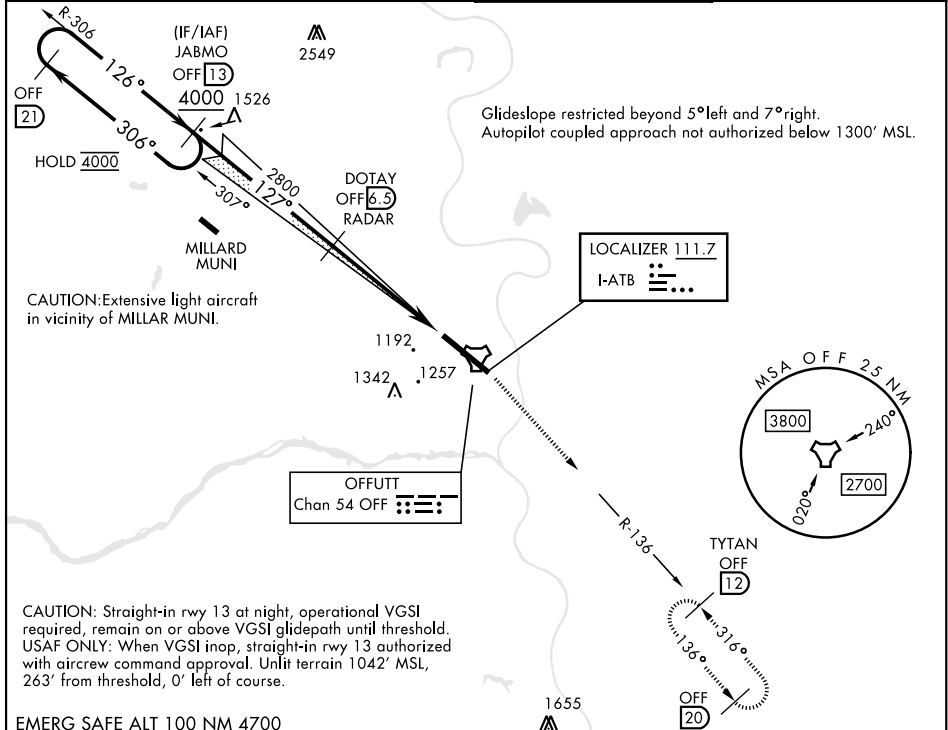
RADAR or DME required

▼ \* When ALS inop, increase CAT AB RVR to 55, vis to 1 mile; CAT CDE vis to 1 $\frac{1}{8}$  miles.  
\*\* Circling not authorized N of Rwy 13-31.

ALS-F1  
(A1)

MISSED APPROACH: Climb to 3000 via OFF TACAN R-136 to TYTAN and hold.

ATIS <b>126.025 273.5</b>	OMAHA APP CON <b>120.1 354.05 (W)</b> <b>124.5 263.0 (E)</b>	TOWER <b>123.7 279.625</b>	GND CON <b>121.7 289.4</b>
------------------------------	--	-------------------------------	-------------------------------



NC-2, 08 AUG 2024 to 05 SEP 2024

NC-2, 08 AUG 2024 to 05 SEP 2024

EMERG SAFE ALT 100 NM 4700

3000 OFF R-136	TYTAN OFF 12	ELEV 1048	TDZE 1048
-------------------	-----------------	-----------	-----------

Rwy 13 ldg 10,695'  
Rwy 31 ldg 10,612'

CATEGORY	A	B	C	D	E	HIRL Rwy 13-31 Rwy 13-31 ALS nstd		
S-ILS 13	1298/50		250	(300-1)		FAF to MAP 4.9 NM		
S-LOC 13*	1560/50	512 (600-1)	1560/55	512	(600-1)			
CIRCLING**	1560-1	512 (600-1)	1660-1 $\frac{3}{4}$ 612 (700-134)	1940-3	892 (900-3)			
		Knots		60	90	120	150	180
		Min:Sec		4:54	3:16	2:27	1:58	1:38

OMAHA, NEBRASKA

41° 07' N-95° 54' W

OFFUTT AFB (KOFF)

Amtd 1 18APR24

# ILS or LOC RWY 13