

HI-ILS or LOC Z RWY 31

LOC I-OFF 109.5	APCH CRS 307°	Rwy ldg 10,612 TDZE 991 Arprt Elev 1048	[USAF]	OFFUTT AFB (KOFF)
---------------------------	-------------------------	--	--------	-------------------

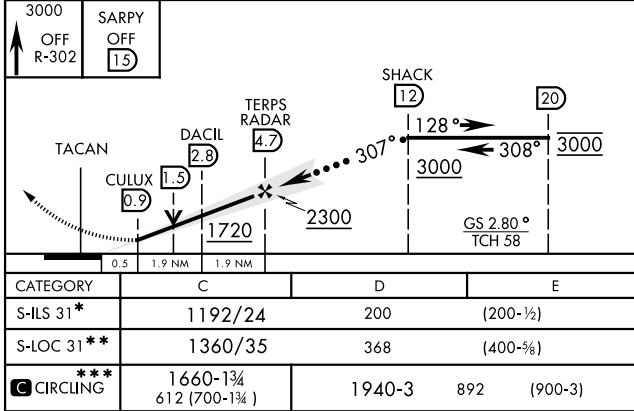
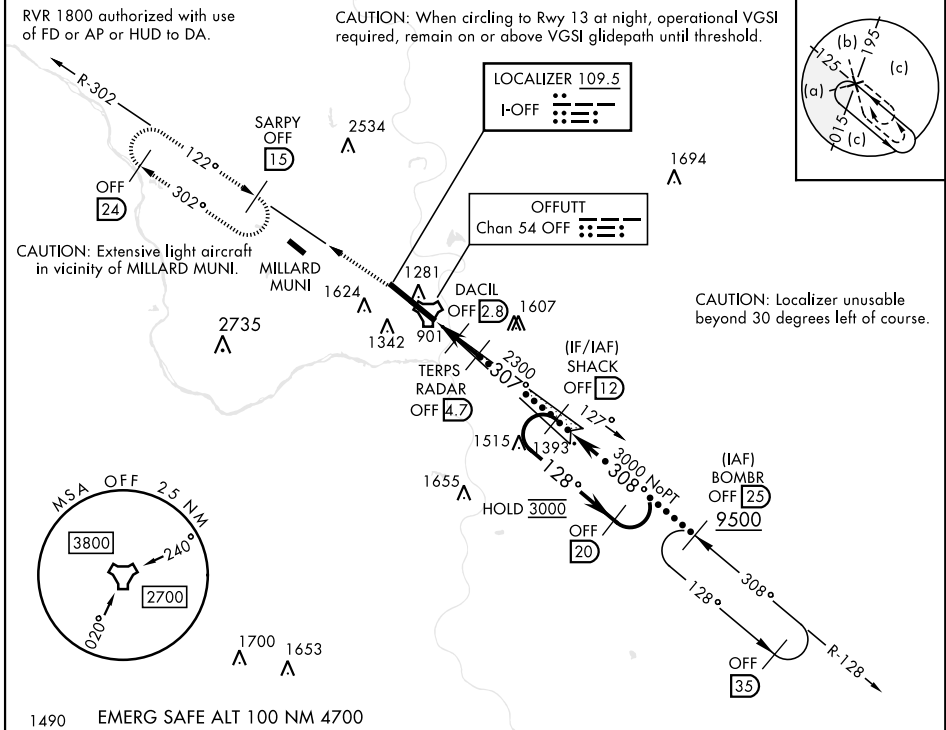
RADAR or DME required

▼ * When ALS inop, increase CAT CDE RVR to 40 and vis to 3/4 mile.
 ** When ALS inop, increase CAT CDE RVR to 55 and vis to 1 mile.
 *** Circling not authorized N of Rwy 13-31.

ALS-F1 (A1)

MISSED APPROACH: Climb to 3000 via OFF TACAN R-302 to SARPY and hold.

ATIS 126.025 273.5	OMAHA APP CON 124.5 263.0 (E) 120.1 354.05 (W)	TOWER 123.7 279.625	GND CON 121.7 289.4
------------------------------	--	-------------------------------	-------------------------------



ELEV	1048	TDZE	991
Rwy 13 ldg 10,695' Rwy 31 ldg 10,612'			
HIRL Rwy 13-31 Rwy 13-31 ALS nstd			
FAF to MAP 3.8 NM			
Knots	120	140	160 180 200
Min:Sec	1:54	1:38	1:26 1:16 1:08

HI-ILS or LOC Z RWY 31

NC-2, 31 OCT 2024 to 28 NOV 2024

NC-2, 31 OCT 2024 to 28 NOV 2024