

WAAS CH 90113 W36A	APP CRS 002°	Rwy Idg 7094 TDZE 2132 Apt Elev 2132
--	------------------------	---

RNAV (GPS) RWY 36

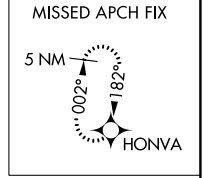
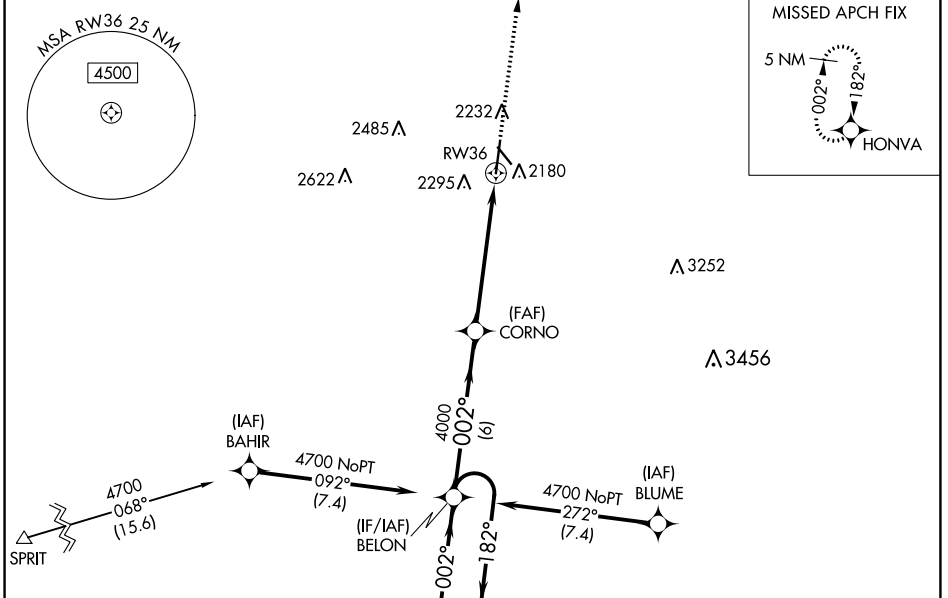
KEARNEY RGNL (E.A.R.)

RNP APCH - GPS.

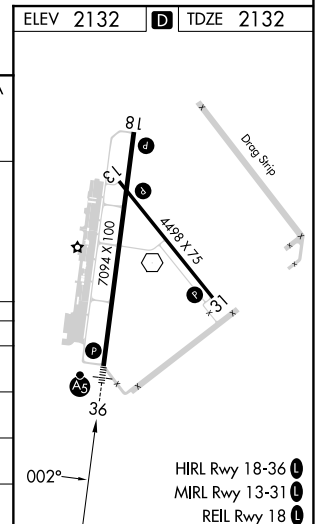
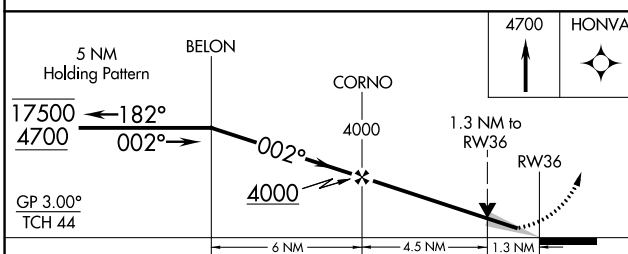
MALSRL

MISSED APPROACH: Climb to 4700 direct HONVA and hold.

AWOS-3PT 123.875	MINNEAPOLIS CENTER 119.4 278.8	UNICOM 123.0 (CTAF)
----------------------------	--	-------------------------------



Procedure NA for arrivals at SPRIT on V220 southwest bound.



CATEGORY	A	B	C	D
LPV DA	2332-1/2		200 (200-1/2)	
LNAV/VNAV DA	2419-1/2		287 (300-1/2)	
LNAV MDA	2580-1/2 448 (500-1/2)		2580-7/8 448 (500-7/8)	
CIRCLING	2600-1 468 (500-1)		2640-1 1/2 508 (600-1 1/2) 2840-2 1/4 708 (800-2 1/4)	

- HIRL Rwy 18-36
- MIRL Rwy 13-31
- REIL Rwy 18

NC-2, 31 OCT 2024 to 28 NOV 2024

NC-2, 31 OCT 2024 to 28 NOV 2024