

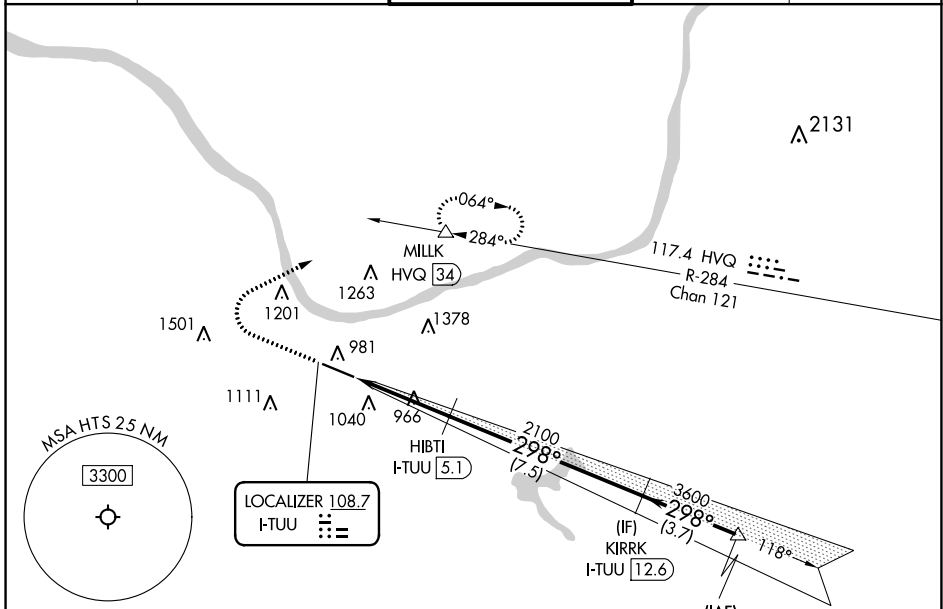
LOC I-TUU 108.7	APP CRS 298°	Rwy ldg 6516	TDZE 828
		Apt Elev 828	

ILS or LOC RWY 30

TRI-STATE/MILTON J FERGUSON FLD (HTS)

DME required. RADAR required for procedure entry at HAITI.		MISSED APPROACH: Climb to 1300 then climbing right turn to 4000 heading 055° and on HVQ VOR/DME R-284 to MILK/HVQ 34 DME and hold, continue climb-in-hold to 4000.		
--	--	--	--	--

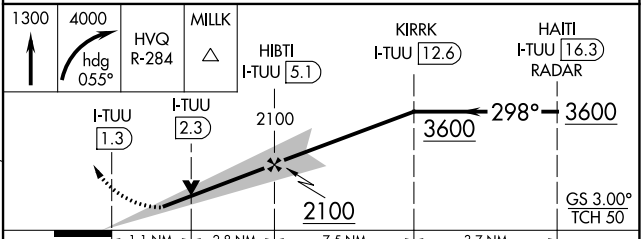
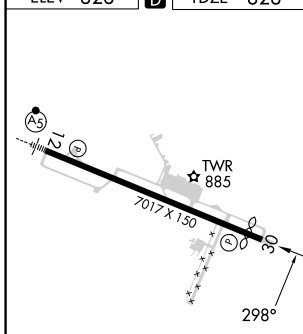
ATIS 125.2	HUNTINGTON APP CON 119.75 270.1	HUNTINGTON TOWER 118.5 270.1	GND CON 121.9	CLNC DEL 118.05
----------------------	---	--	-------------------------	---------------------------



NE-4, 08 AUG 2024 to 05 SEP 2024

NE-4, 08 AUG 2024 to 05 SEP 2024

ELEV 828	D	TDZE 828
----------	----------	----------



	1.1 NM	2.8 NM	7.5 NM	3.7 NM	
CATEGORY	A	B	C	D	
S-ILS 30	1028- ³ / ₄ 200 (200- ³ / ₄)				
S-LOC 30	1220-1	392 (400-1)	1220-1 ¹ / ₈	392 (400-1 ¹ / ₈)	
C CIRCLING	1300-1 472 (500-1)	1380-1 552 (600-1)	1520-2 692 (700-2)	1740-3 912 (1000-3)	